

# AUTUS

DUBAI CREEK HARBOUR

---

FLOOR PLAN - TOWER 1

---

EMAAR

# ALTUS

DUBAI CREEK HARBOUR

TOWER 1

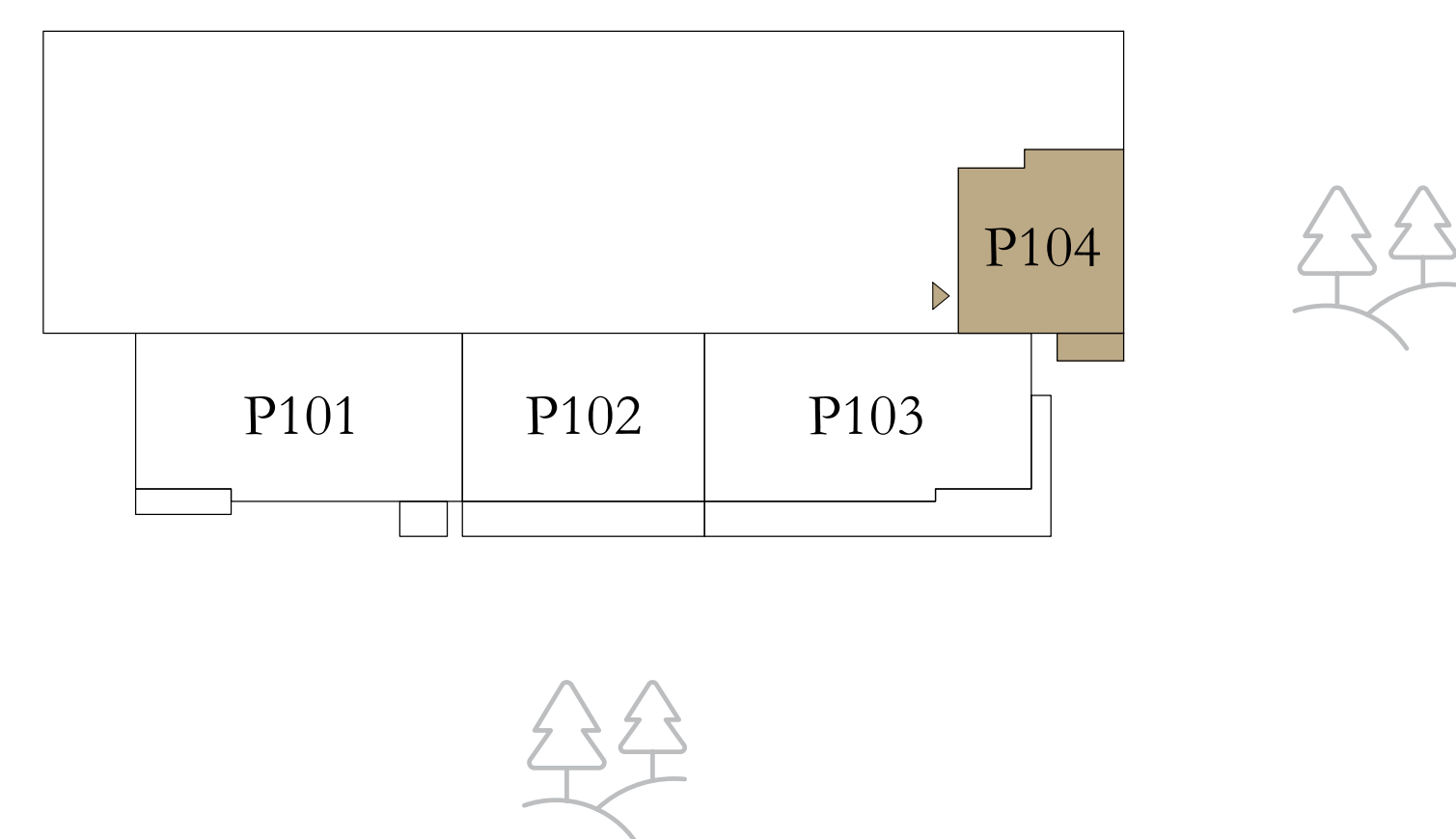
## 1 BEDROOM

PODIUM 01

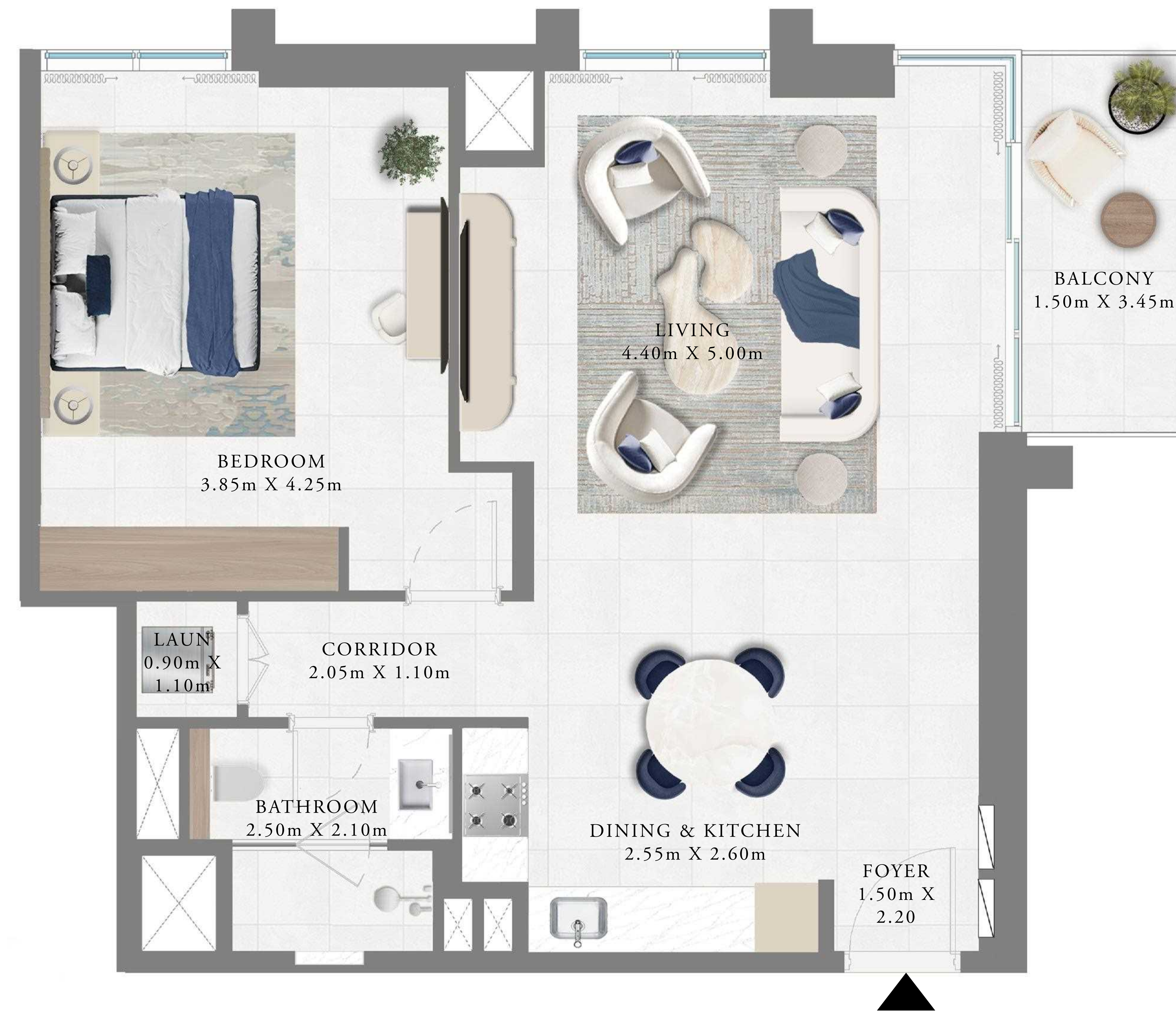
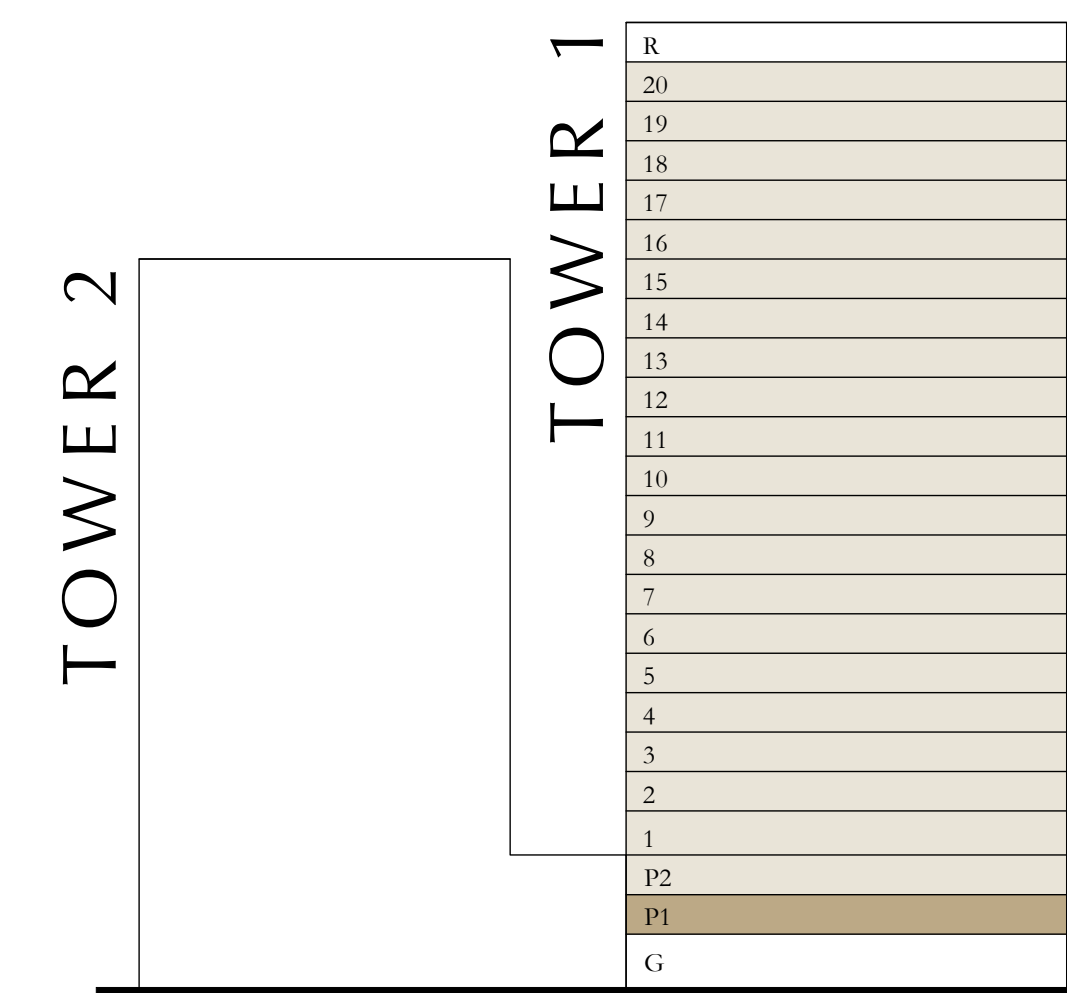
UNIT 04

SUITE AREA	761.12 SQ.FT.	70.71 SQ.M.
BALCONY AREA	61.25 SQ.FT.	5.69 SQ.M.
TOTAL AREA	822.37 SQ.FT.	76.40 SQ.M.

KEY PLAN LEVEL  
PODIUM 01



KEY SECTION



Disclaimer : All dimensions are in imperial and metric, and measured from finish to finish excluding construction tolerances. 2. All materials, dimensions, and drawings are approximate only. 3. Information is subject to change without notice, at developer's absolute discretion. 4. Actual area may vary from the stated area. 5. Drawings not to scale. 6. All images used are for illustrative purposes only and do not represent the actual size, features, specifications, fittings, and furnishings. 7. The developer reserves the right to make revisions / alterations, at its absolute discretion, without any liability whatsoever.

# ALTUS

DUBAI CREEK HARBOUR

TOWER 1

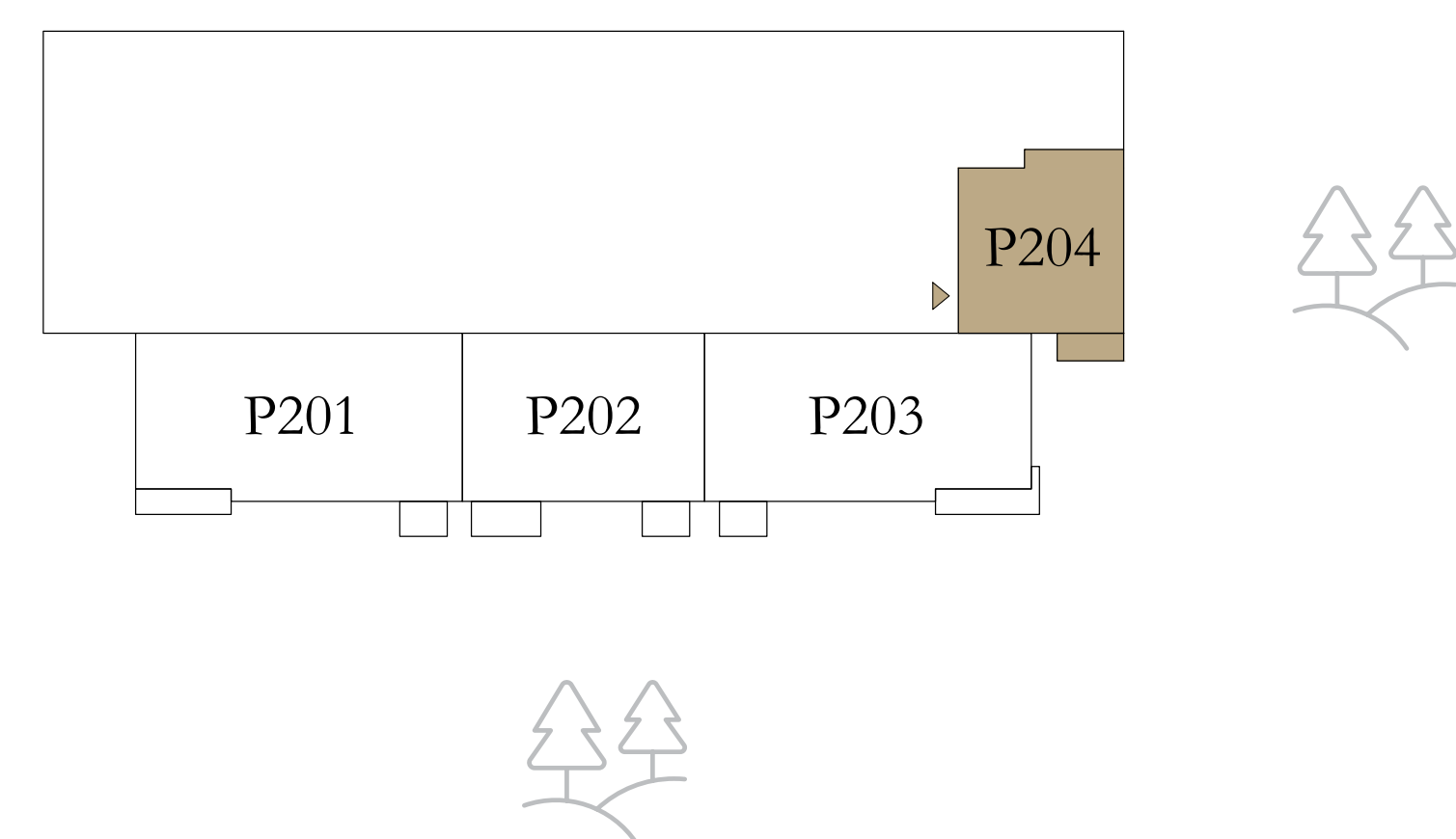
## 1 BEDROOM

PODIUM 02

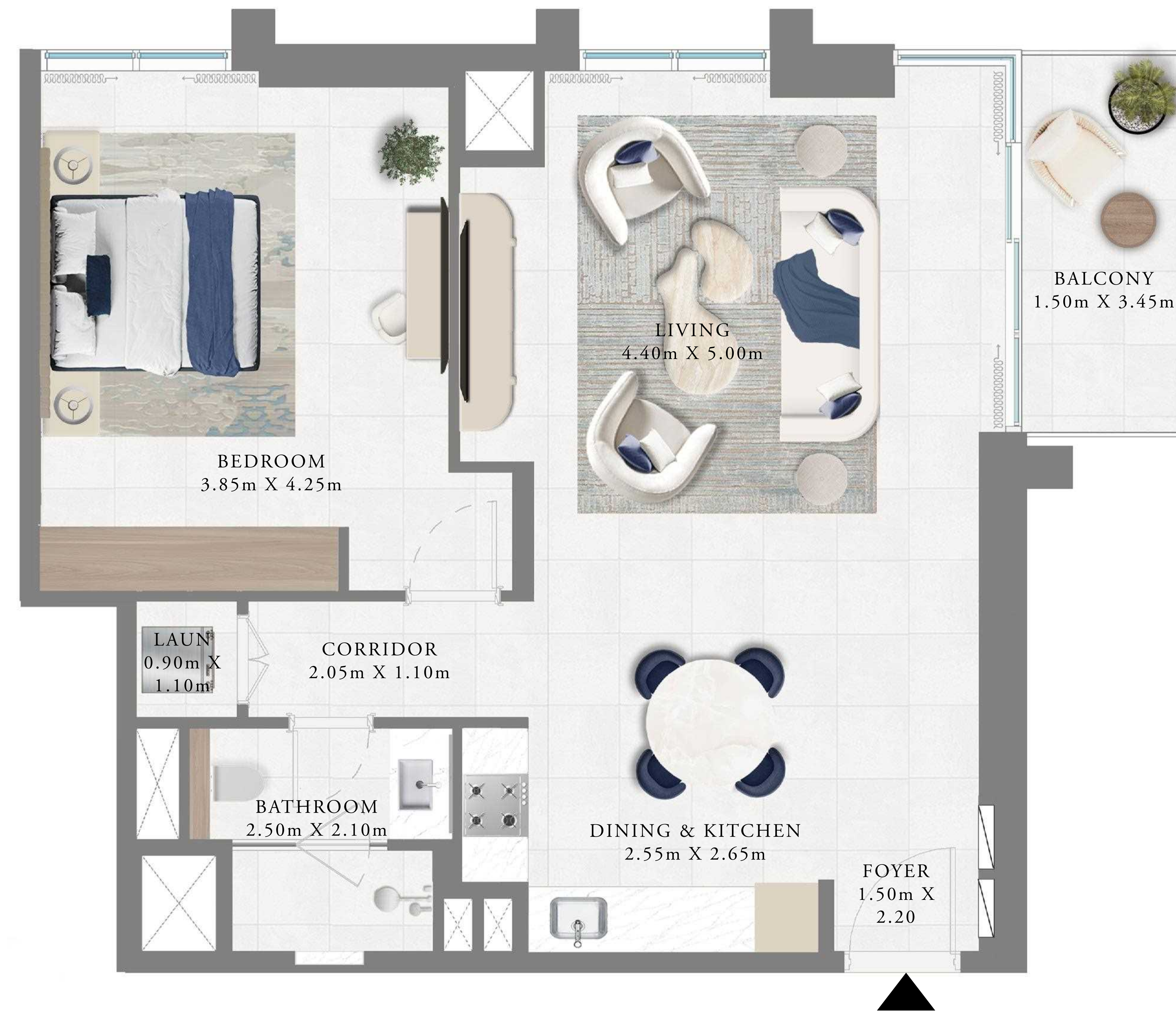
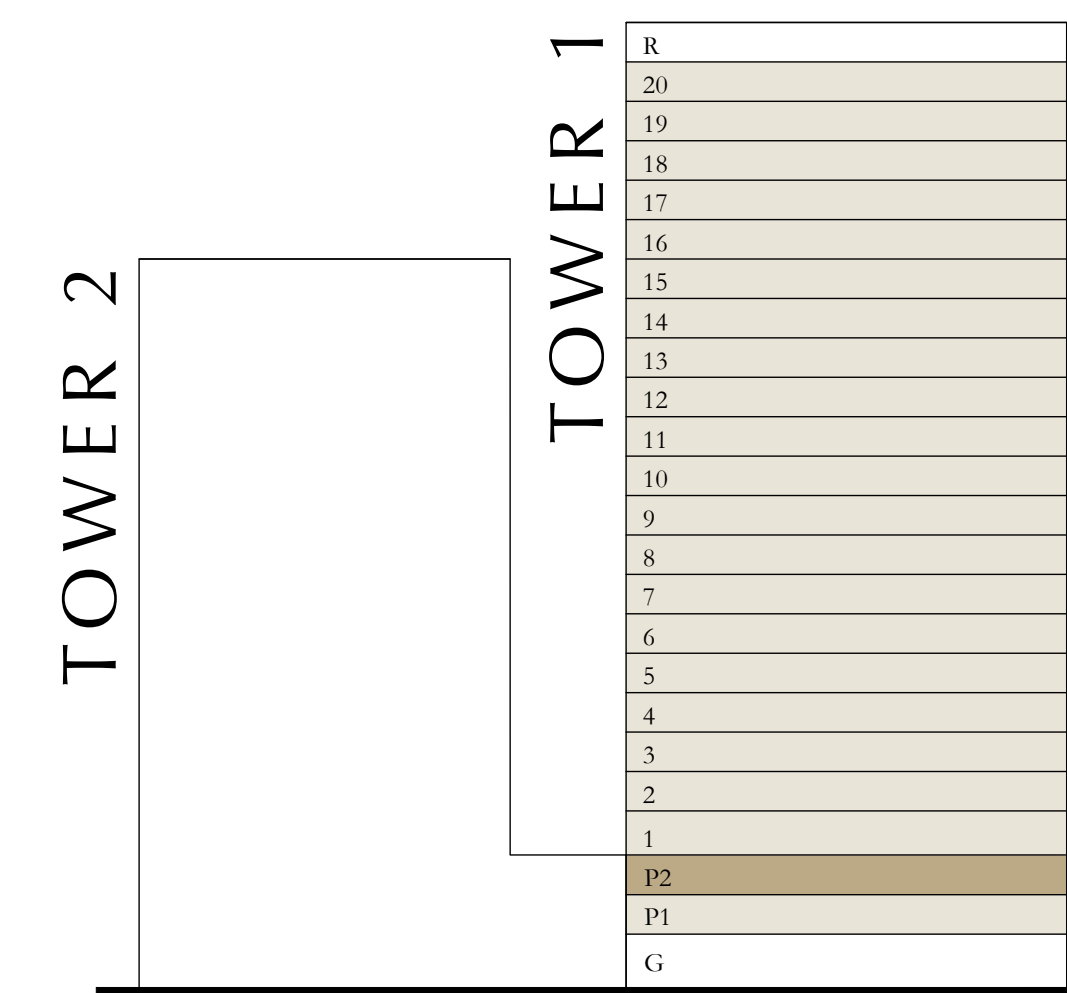
UNIT 04

SUITE AREA	761.65 SQ.FT.	70.76 SQ.M.
BALCONY AREA	60.92 SQ.FT.	5.66 SQ.M.
TOTAL AREA	822.57 SQ.FT.	76.42 SQ.M.

KEY PLAN LEVEL  
PODIUM 02



KEY SECTION



Disclaimer : All dimensions are in imperial and metric, and measured from finish to finish excluding construction tolerances. 2. All materials, dimensions, and drawings are approximate only. 3. Information is subject to change without notice, at developer's absolute discretion. 4. Actual area may vary from the stated area. 5. Drawings not to scale. 6. All images used are for illustrative purposes only and do not represent the actual size, features, specifications, fittings, and furnishings. 7. The developer reserves the right to make revisions / alterations, at its absolute discretion, without any liability whatsoever.

# ALTUS

DUBAI CREEK HARBOUR

TOWER 1

## 1 BEDROOM

LEVEL 02-20

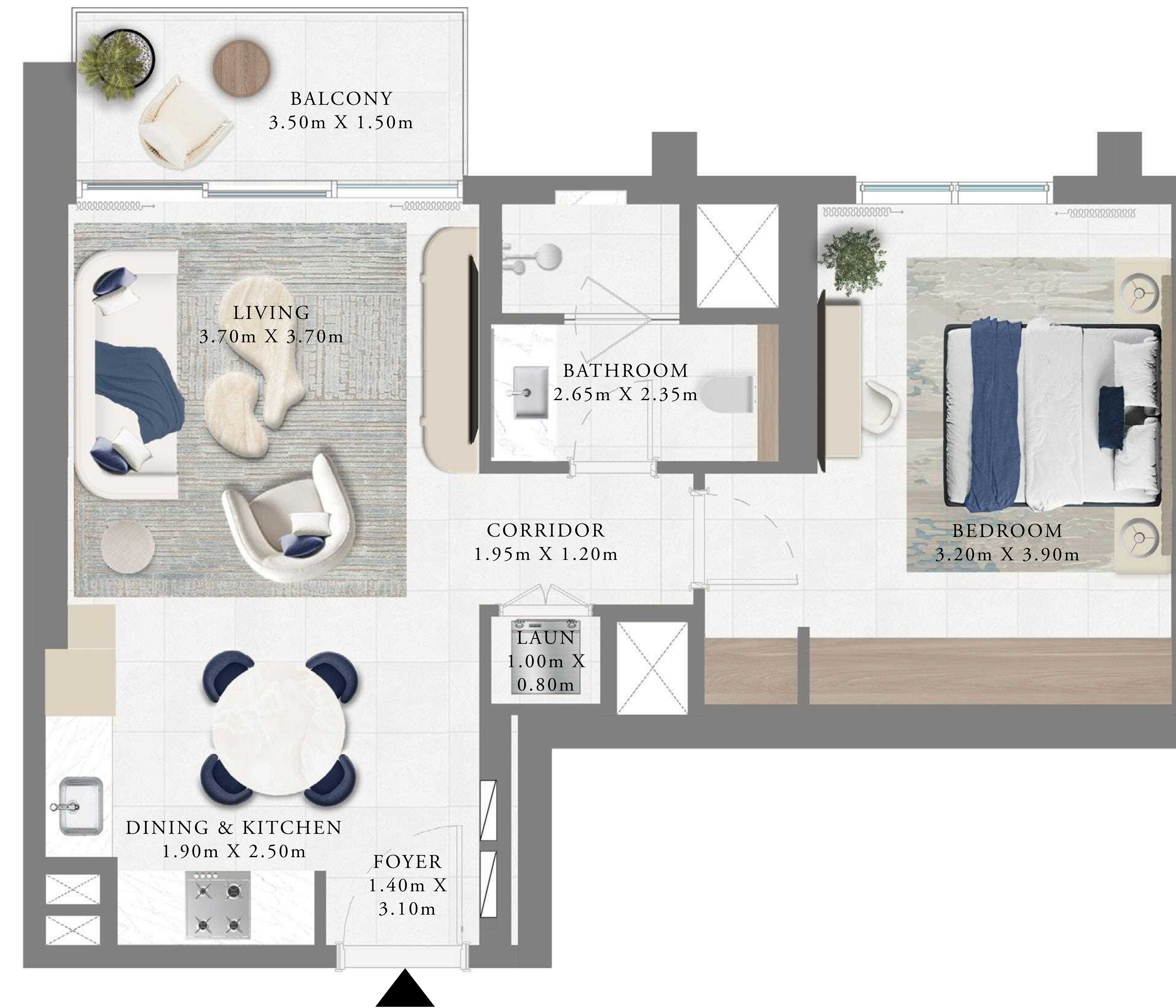
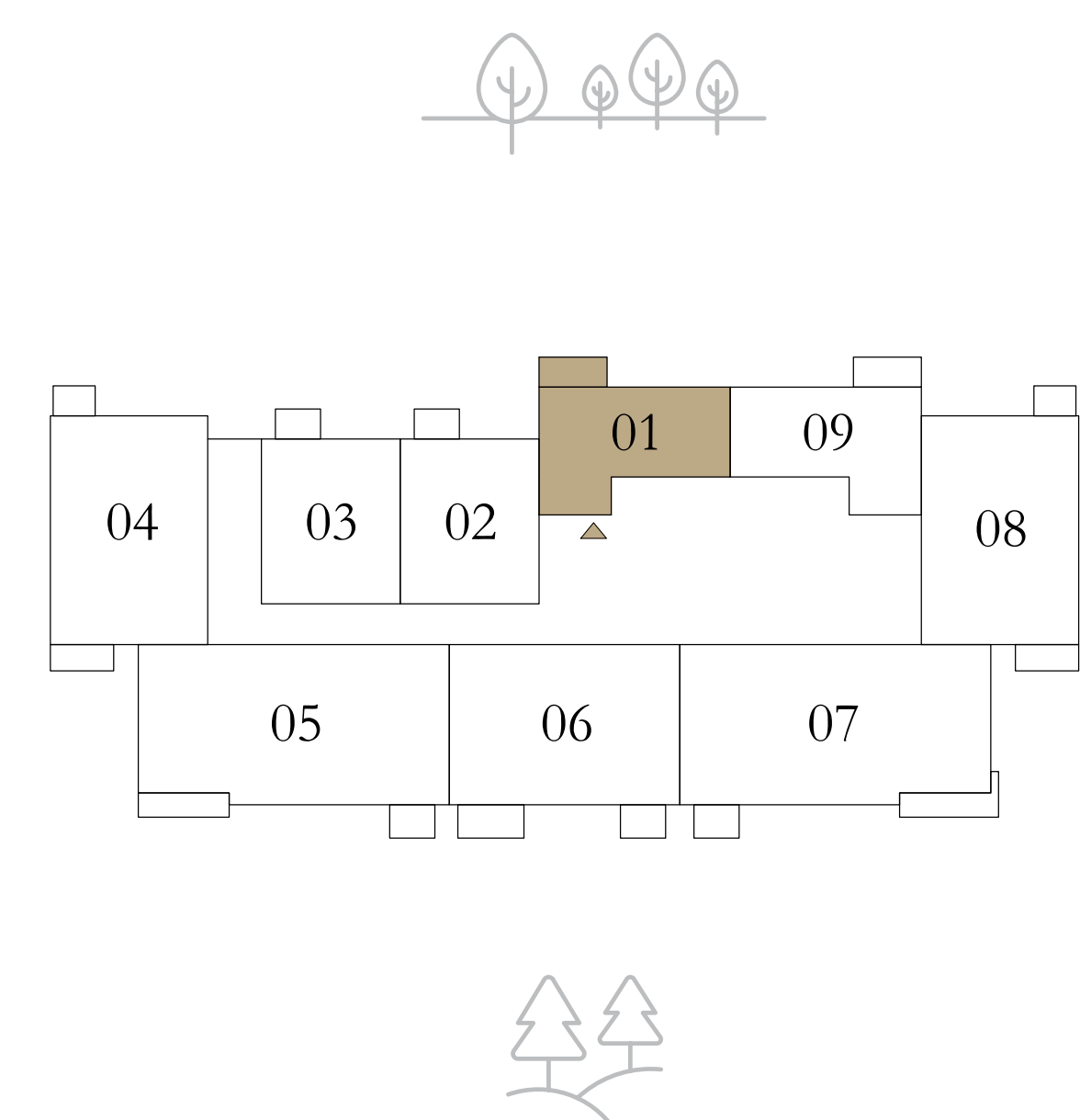
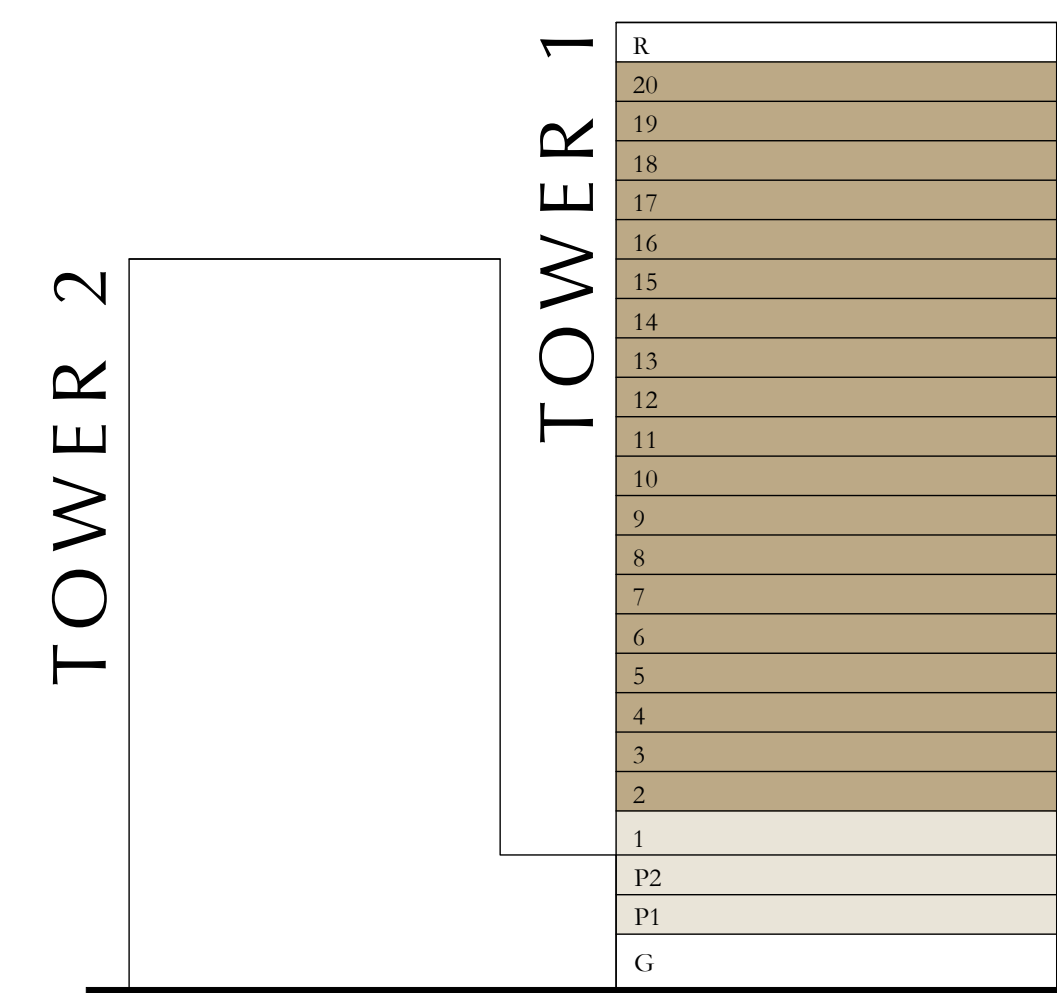
UNIT 01

SUITE AREA	603.86 to 603.96 SQ.FT.	56.10 to 56.11 SQ.M.
BALCONY AREA	60.71 SQ.FT.	5.64 SQ.M.
TOTAL AREA	664.57 to 664.67 SQ.FT.	61.74 to 61.75 SQ.M.

KEY PLAN LEVEL

02-20

KEY SECTION



Disclaimer : All dimensions are in imperial and metric, and measured from finish to finish excluding construction tolerances. 2. All materials, dimensions, and drawings are approximate only. 3. Information is subject to change without notice, at developer's absolute discretion. 4. Actual area may vary from the stated area. 5. Drawings not to scale. 6. All images used are for illustrative purposes only and do not represent the actual size, features, specifications, fittings, and furnishings. 7. The developer reserves the right to make revisions / alterations, at it's absolute discretion, without any liability whatsoever.

# ALTUS

DUBAI CREEK HARBOUR

TOWER 1

## 1 BEDROOM

LEVEL 02-20

UNIT 09

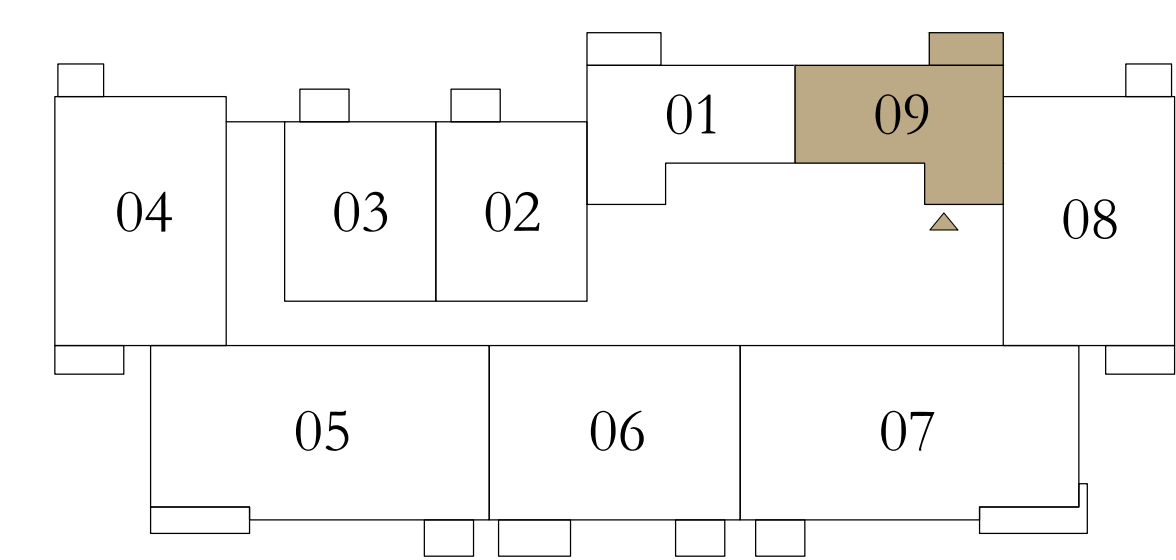
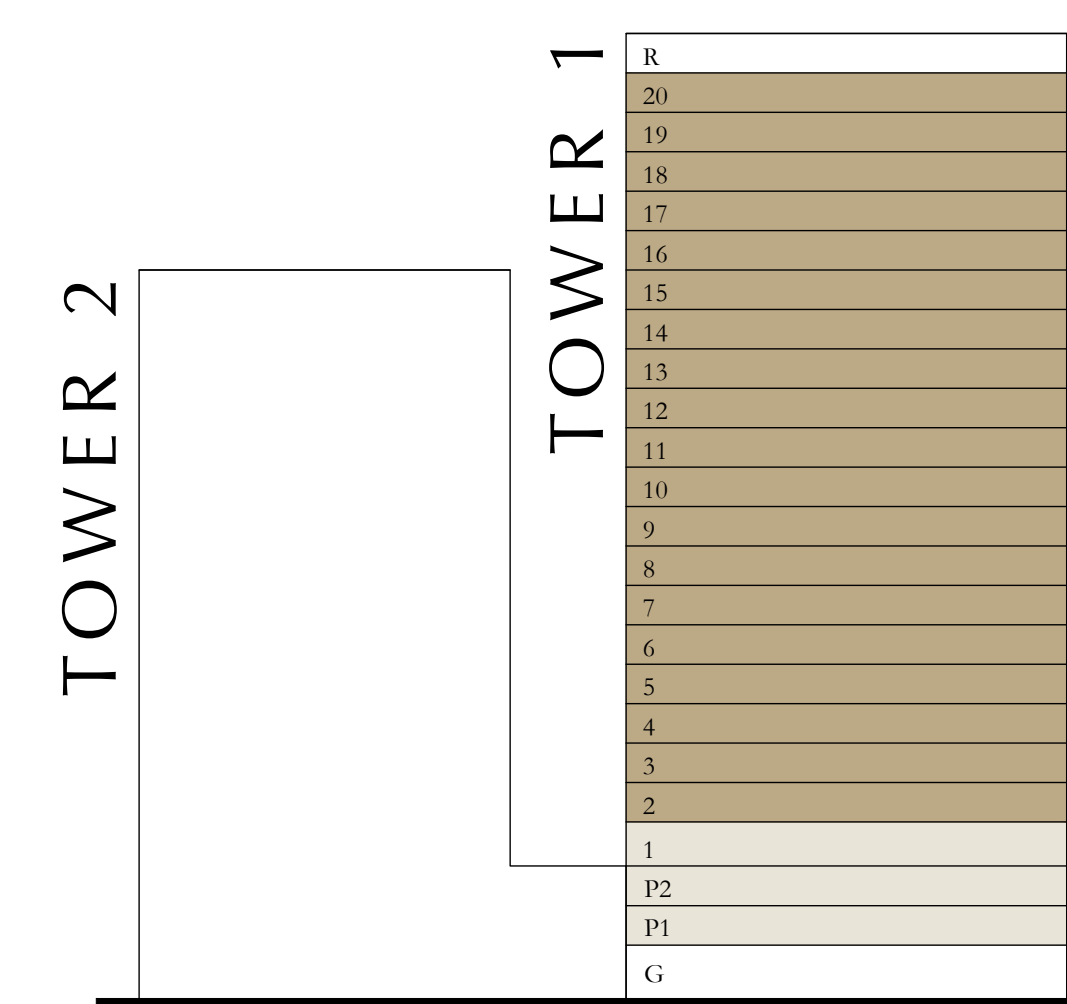
SUITE AREA	610.31 SQ.FT.	56.70 SQ.M.
BALCONY AREA	60.71 SQ.FT.	5.64 SQ.M.
TOTAL AREA	671.02 SQ.FT.	62.34 SQ.M.



KEY PLAN LEVEL

02-20

KEY SECTION



N

Disclaimer : All dimensions are in imperial and metric, and measured from finish to finish excluding construction tolerances. 2. All materials, dimensions, and drawings are approximate only. 3. Information is subject to change without notice, at developer's absolute discretion. 4. Actual area may vary from the stated area. 5. Drawings not to scale. 6. All images used are for illustrative purposes only and do not represent the actual size, features, specifications, fittings, and furnishings. 7. The developer reserves the right to make revisions / alterations, at its absolute discretion, without any liability whatsoever.

# ALTUS

DUBAI CREEK HARBOUR

TOWER 1

## 1 BEDROOM

LEVEL 02-20

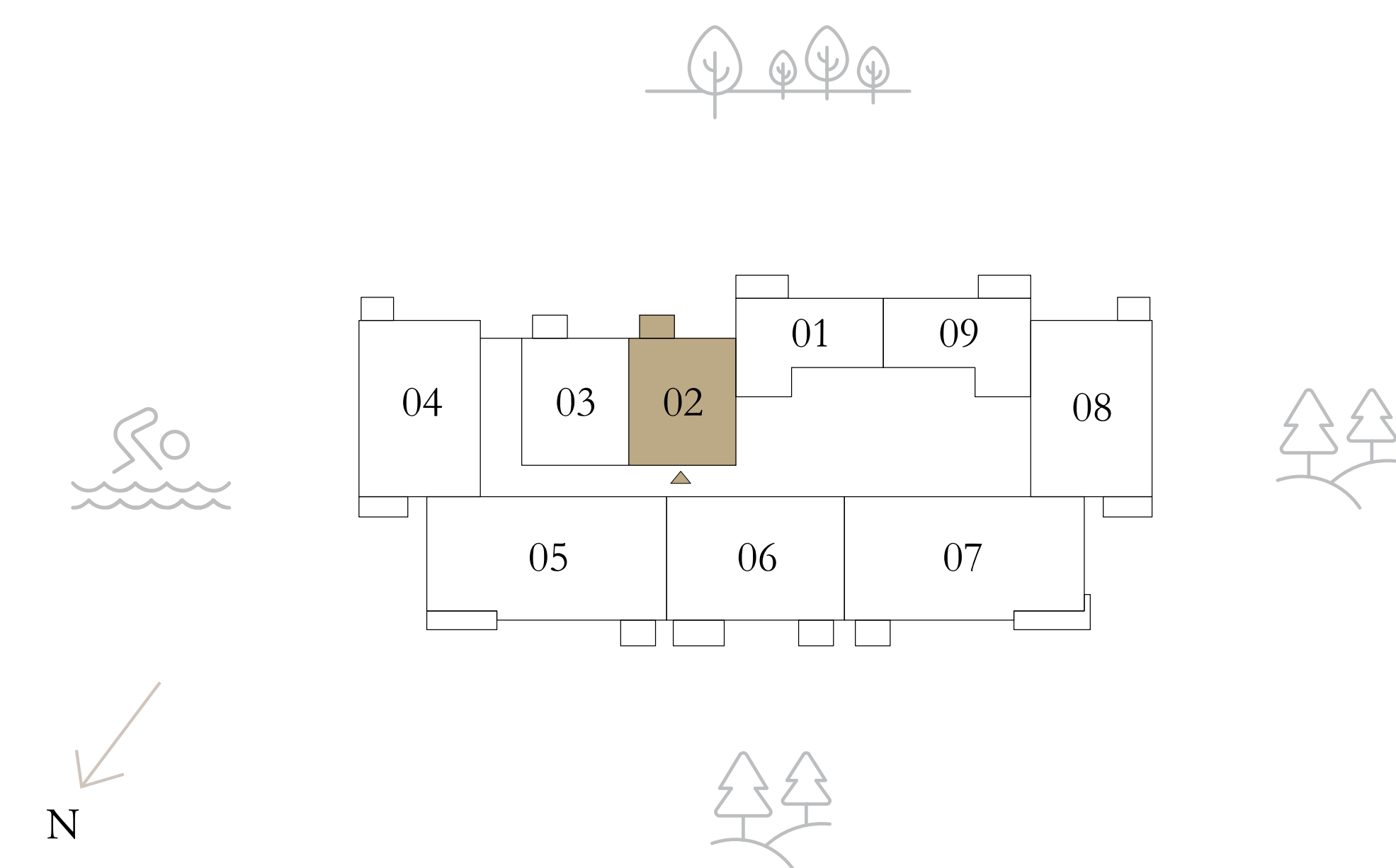
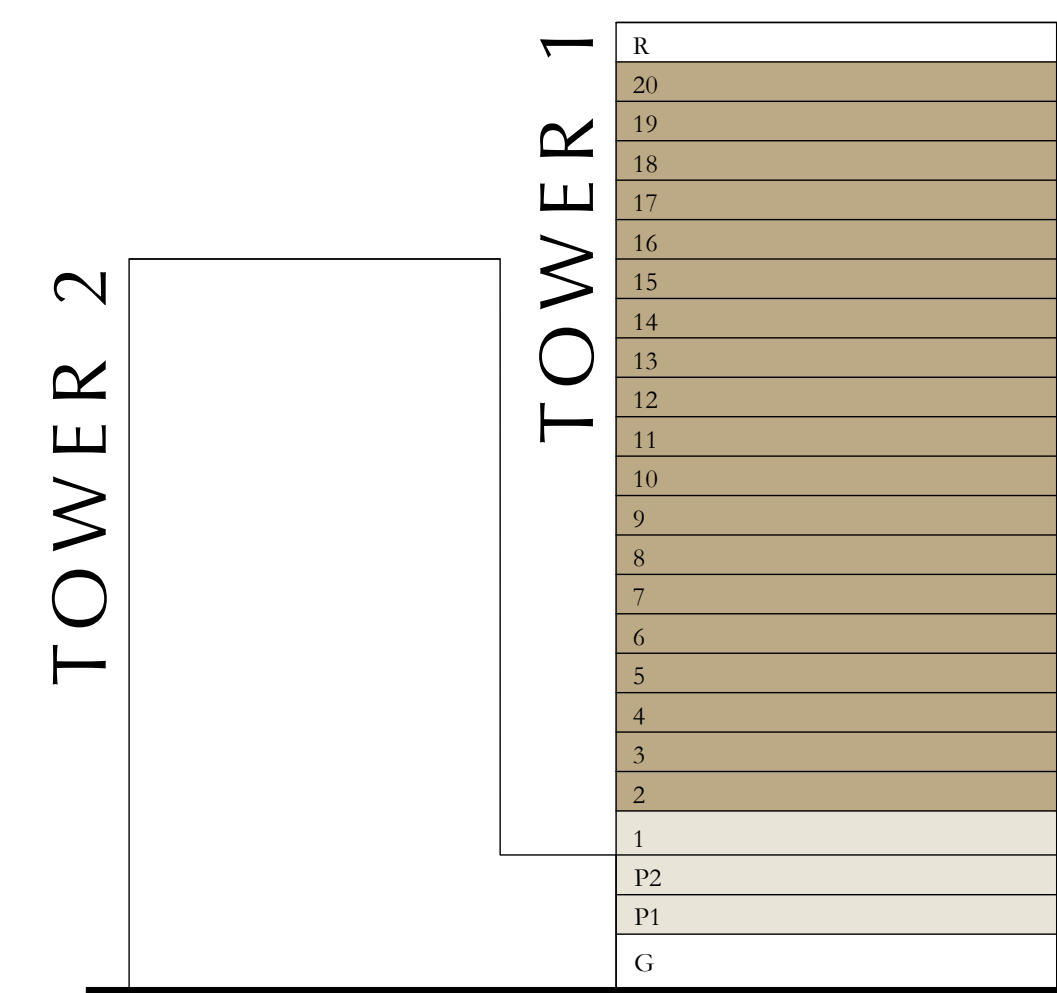
UNIT 02

SUITE AREA	686.41 to 686.63 SQ.FT.	63.77 to 63.79 SQ.M.
BALCONY AREA	42.19 SQ.FT.	3.92 SQ.M.
TOTAL AREA	728.60 to 728.82 SQ.FT.	67.69 to 67.71 SQ.M.

KEY PLAN LEVEL

02-20

KEY SECTION



Disclaimer : All dimensions are in imperial and metric, and measured from finish to finish excluding construction tolerances. 2. All materials, dimensions, and drawings are approximate only. 3. Information is subject to change without notice, at developer's absolute discretion. 4. Actual area may vary from the stated area. 5. Drawings not to scale. 6. All images used are for illustrative purposes only and do not represent the actual size, features, specifications, fittings, and furnishings. 7. The developer reserves the right to make revisions / alterations, at it's absolute discretion, without any liability whatsoever.

# ALTUS

DUBAI CREEK HARBOUR

TOWER 1

## 1 BEDROOM

LEVEL 02-20

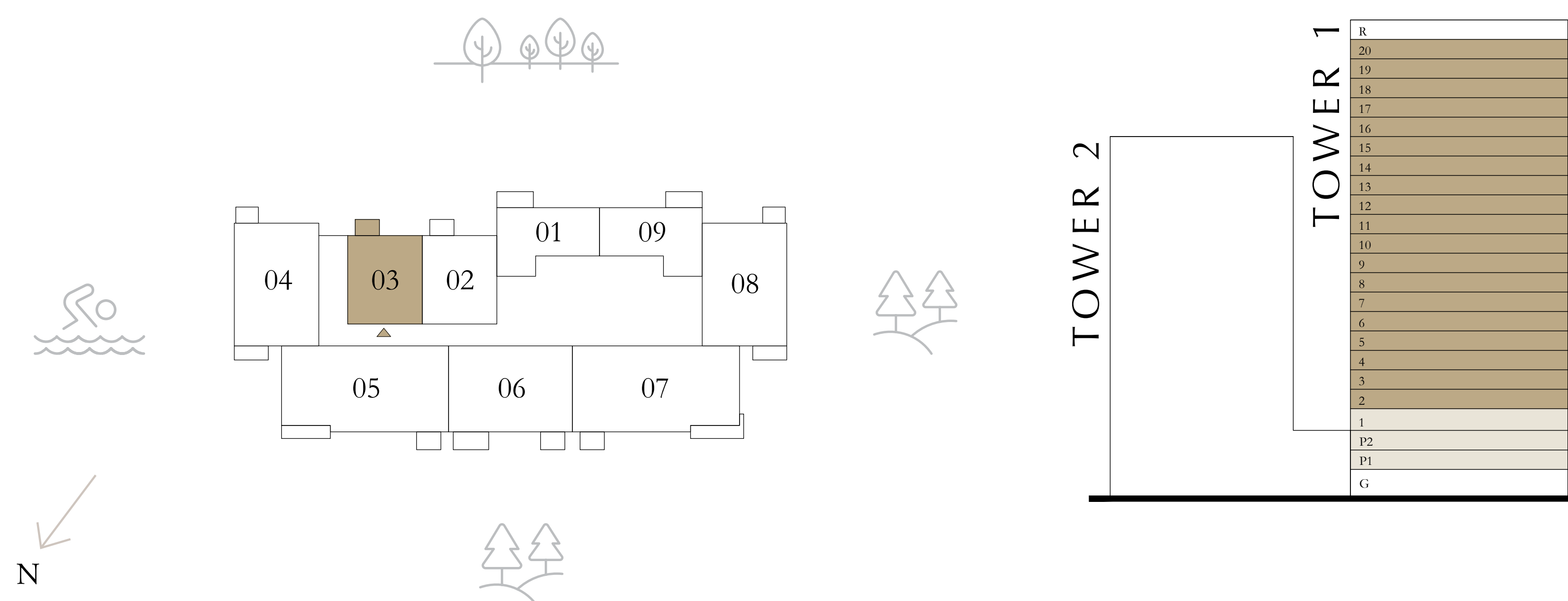
UNIT 03

SUITE AREA	703.64 SQ.FT.	65.37 SQ.M.
BALCONY AREA	42.19 SQ.FT.	3.92 SQ.M.
TOTAL AREA	745.83 SQ.FT.	69.29 SQ.M.

KEY PLAN LEVEL

02-20

KEY SECTION



Disclaimer : All dimensions are in imperial and metric, and measured from finish to finish excluding construction tolerances. 2. All materials, dimensions, and drawings are approximate only. 3. Information is subject to change without notice, at developer's absolute discretion. 4. Actual area may vary from the stated area. 5. Drawings not to scale. 6. All images used are for illustrative purposes only and do not represent the actual size, features, specifications, fittings, and furnishings. 7. The developer reserves the right to make revisions / alterations, at its absolute discretion, without any liability whatsoever.

# ALTUS

DUBAI CREEK HARBOUR

TOWER 1

## 2 BEDROOM

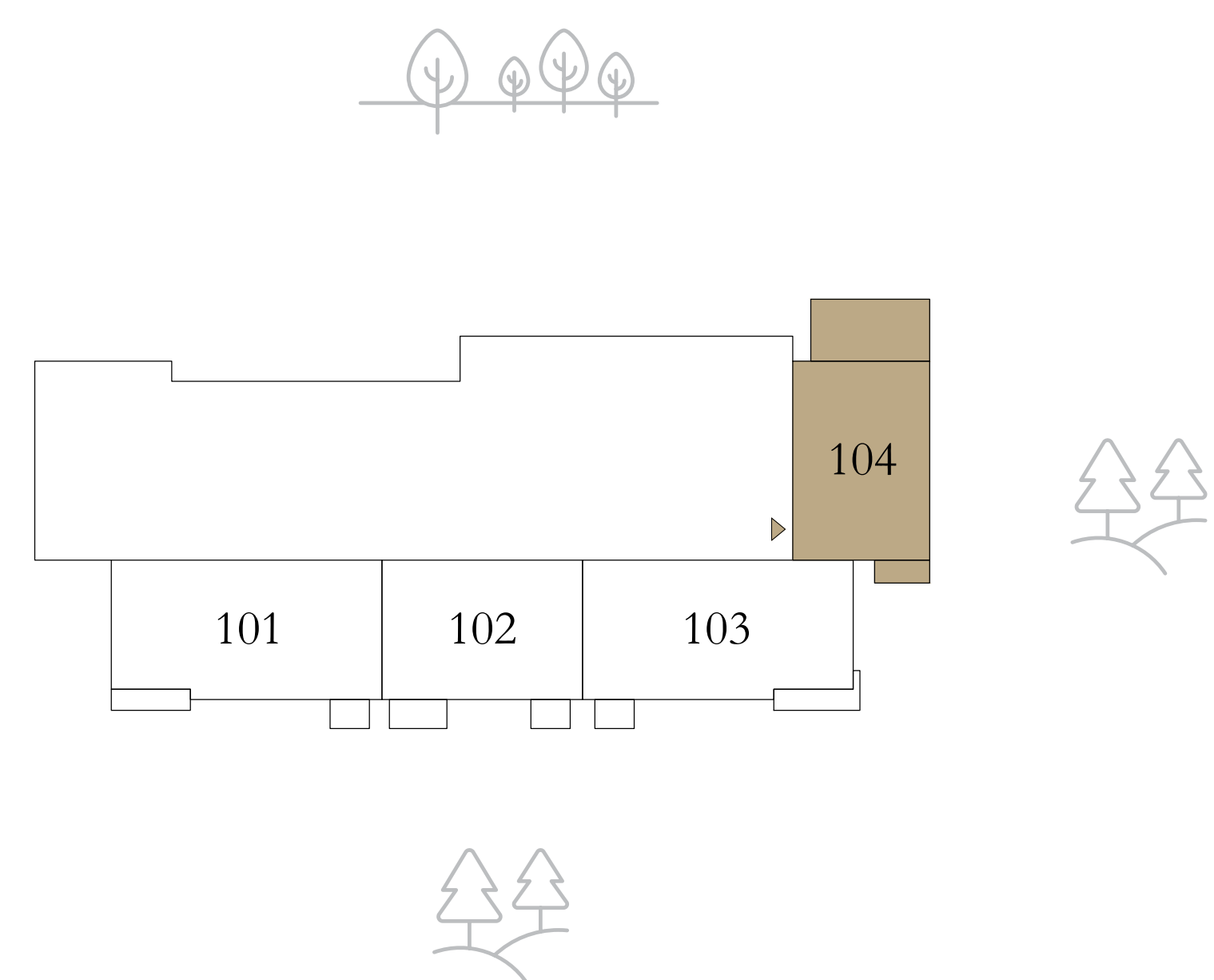
LEVEL 01

UNIT 04

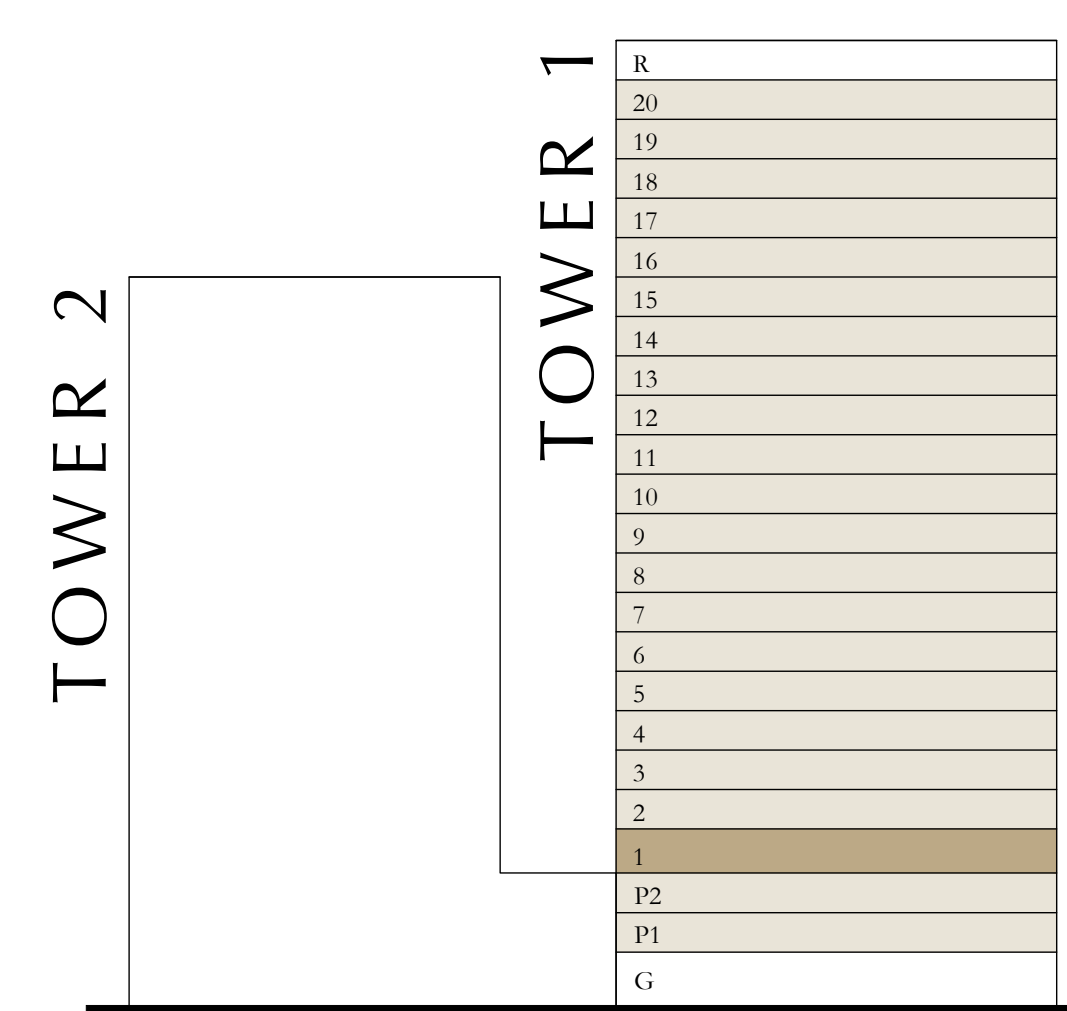
SUITE AREA	1061.21 SQ.FT.	98.59 SQ.M.
BALCONY AREA	347.46 SQ.FT.	32.28 SQ.M.
TOTAL AREA	1408.67 SQ.FT.	130.87 SQ.M.

KEY PLAN LEVEL

01



KEY SECTION



Disclaimer : All dimensions are in imperial and metric, and measured from finish to finish excluding construction tolerances. 2. All materials, dimensions, and drawings are approximate only. 3. Information is subject to change without notice, at developer's absolute discretion. 4. Actual area may vary from the stated area. 5. Drawings not to scale. 6. All images used are for illustrative purposes only and do not represent the actual size, features, specifications, fittings, and furnishings. 7. The developer reserves the right to make revisions / alterations, at it's absolute discretion, without any liability whatsoever.



# ALTUS

DUBAI CREEK HARBOUR

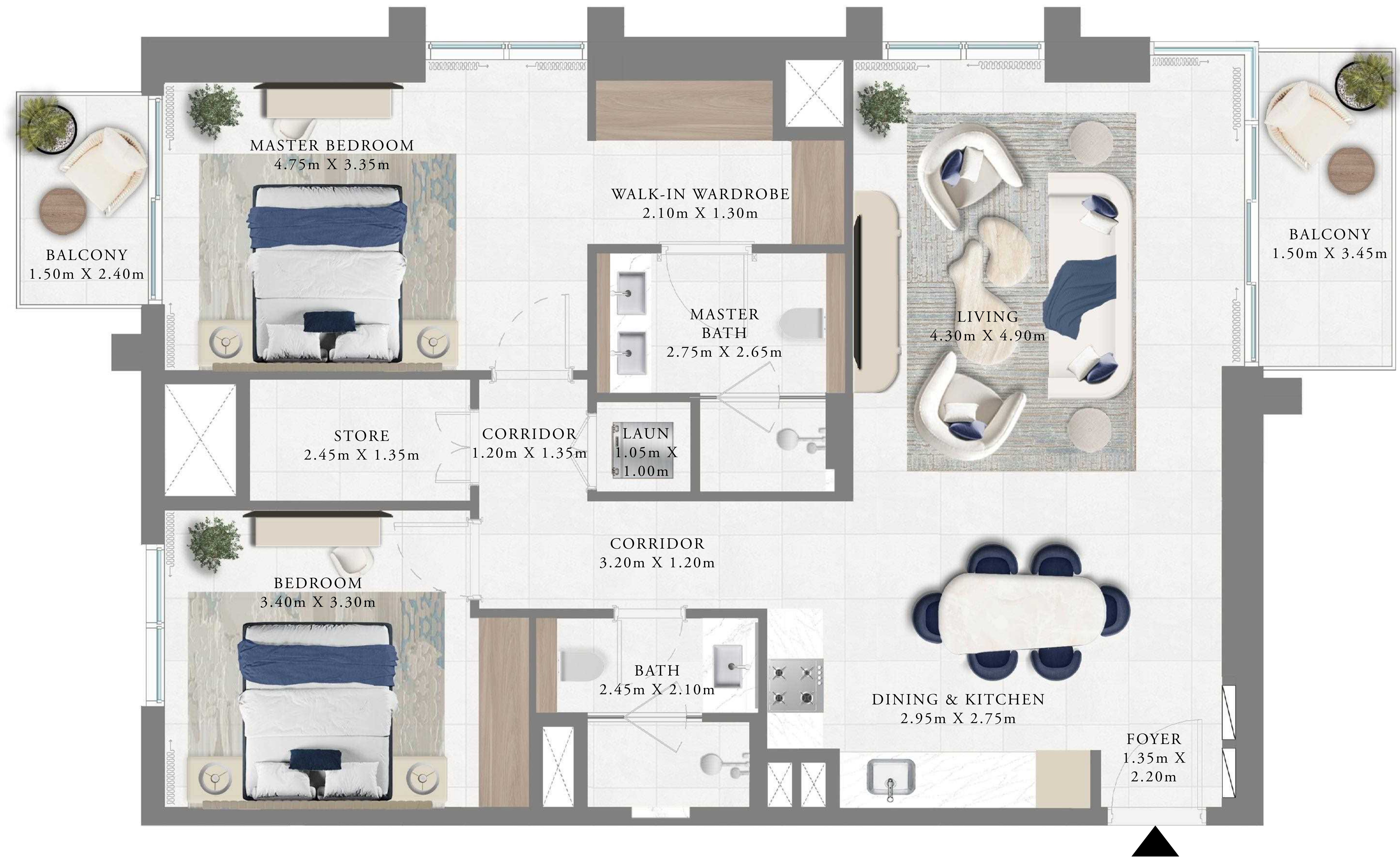
TOWER 1

## 2 BEDROOM

LEVEL 02-20

UNIT 08

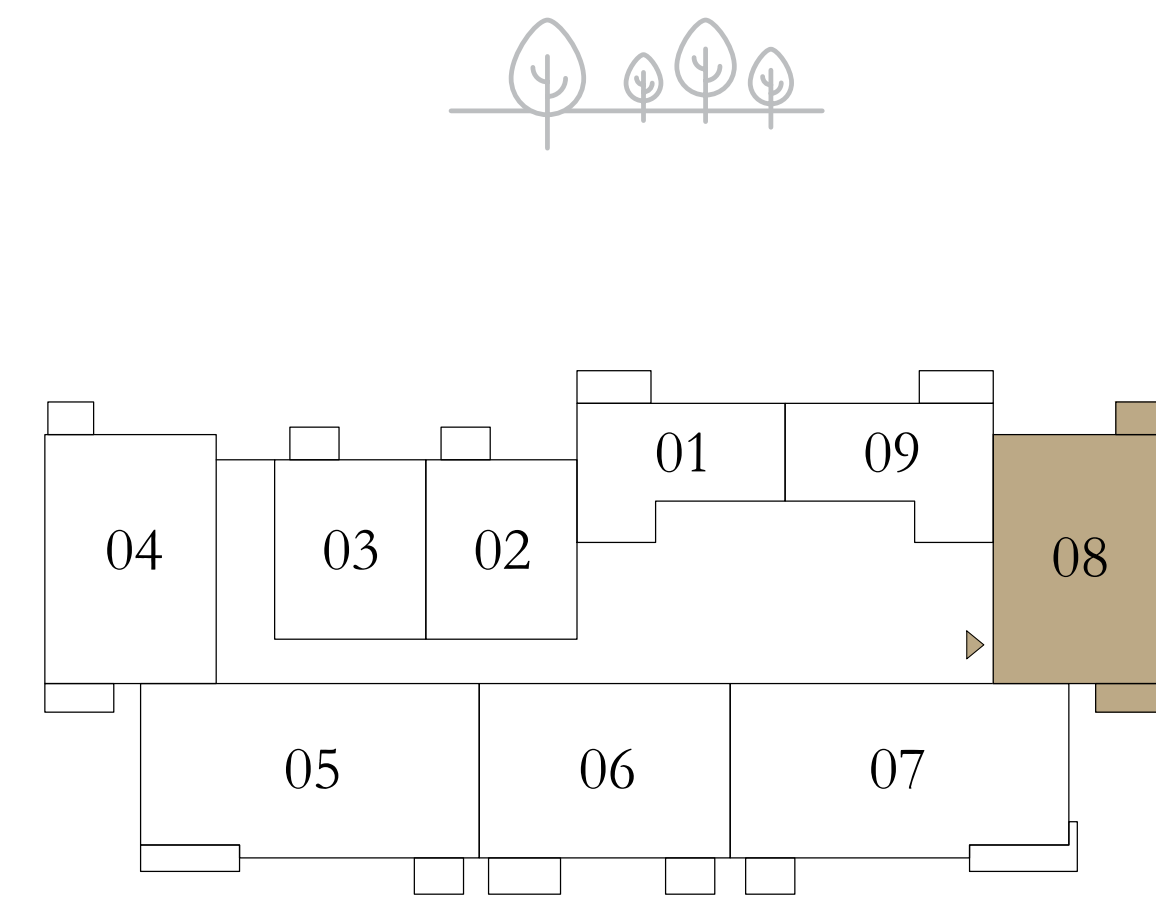
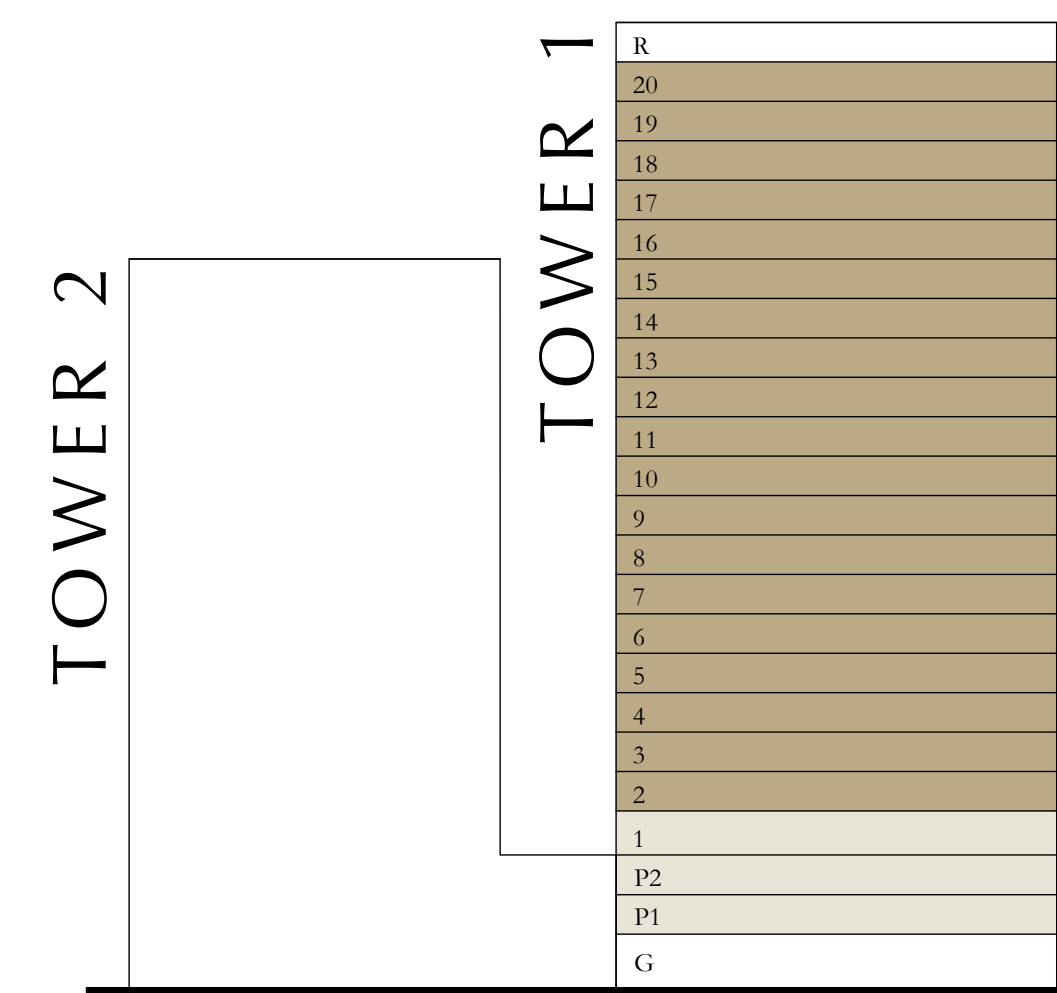
SUITE AREA	1060.68 SQ.FT.	98.54 SQ.M.
BALCONY AREA	102.90 SQ.FT.	9.56 SQ.M.
TOTAL AREA	1163.58 SQ.FT.	108.10 SQ.M.



KEY PLAN LEVEL

02-20

KEY SECTION



N

Disclaimer : All dimensions are in imperial and metric, and measured from finish to finish excluding construction tolerances. 2. All materials, dimensions, and drawings are approximate only. 3. Information is subject to change without notice, at developer's absolute discretion. 4. Actual area may vary from the stated area. 5. Drawings not to scale. 6. All images used are for illustrative purposes only and do not represent the actual size, features, specifications, fittings, and furnishings. 7. The developer reserves the right to make revisions / alterations, at it's absolute discretion, without any liability whatsoever.

EMAAR

# ALTUS

DUBAI CREEK HARBOUR

TOWER 1

## 2 BEDROOM

LEVEL 02-20

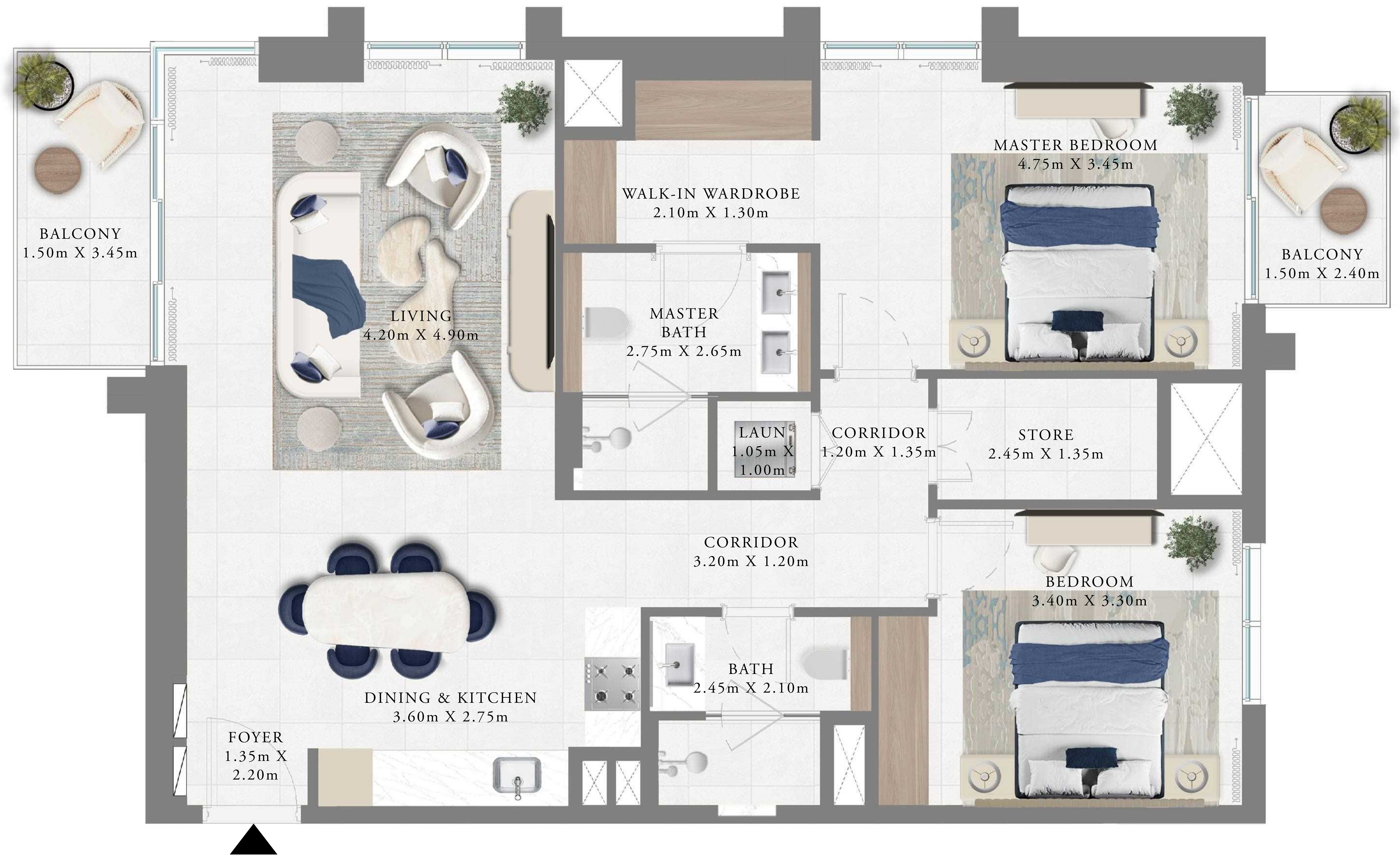
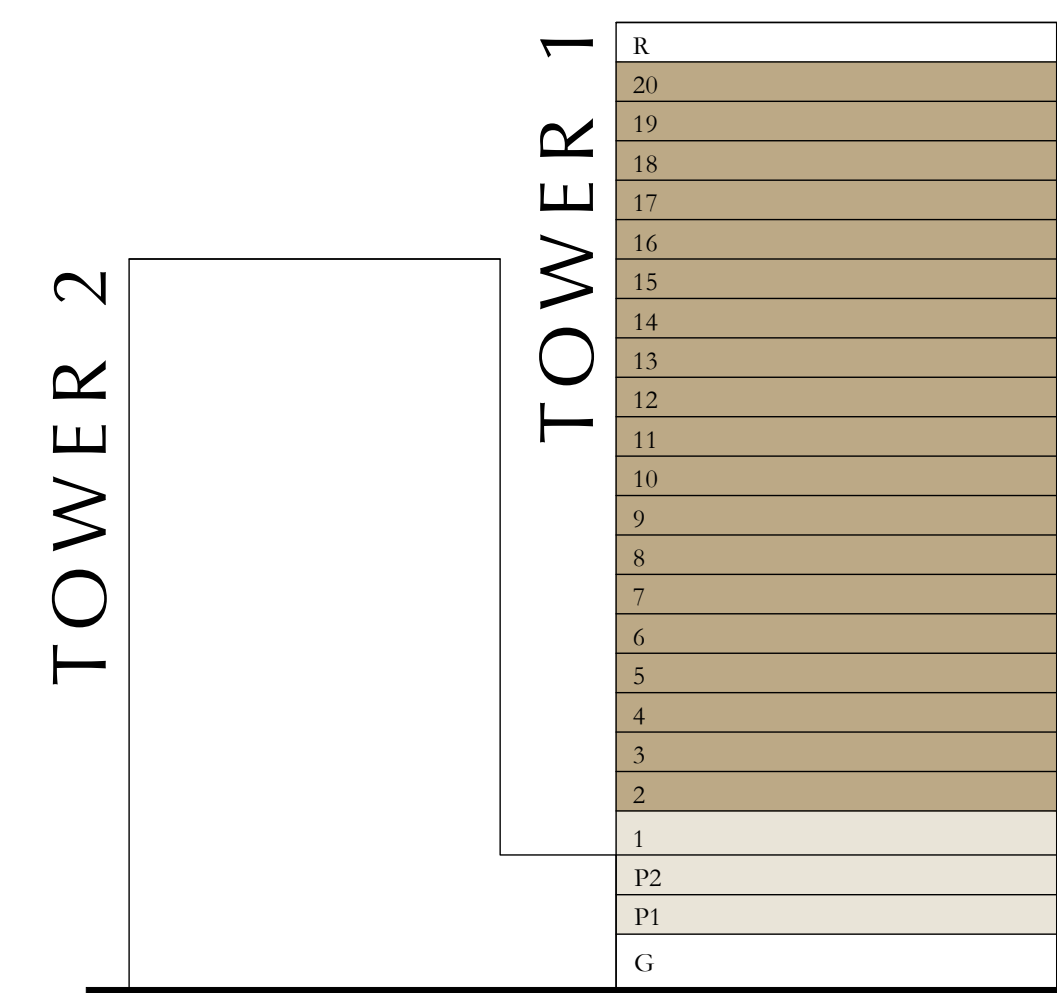
UNIT 04

SUITE AREA	1066.92 SQ.FT.	99.12 SQ.M.
BALCONY AREA	101.93 to 102.04 SQ.FT.	9.47 to 9.48 SQ.M.
TOTAL AREA	1168.85 to 1168.96 SQ.FT.	108.59 to 108.60 SQ.M.

KEY PLAN LEVEL

02-20

KEY SECTION



Disclaimer : All dimensions are in imperial and metric, and measured from finish to finish excluding construction tolerances. 2. All materials, dimensions, and drawings are approximate only. 3. Information is subject to change without notice, at developer's absolute discretion. 4. Actual area may vary from the stated area. 5. Drawings not to scale. 6. All images used are for illustrative purposes only and do not represent the actual size, features, specifications, fittings, and furnishings. 7. The developer reserves the right to make revisions / alterations, at it's absolute discretion, without any liability whatsoever.

# ALTUS

DUBAI CREEK HARBOUR

TOWER 1

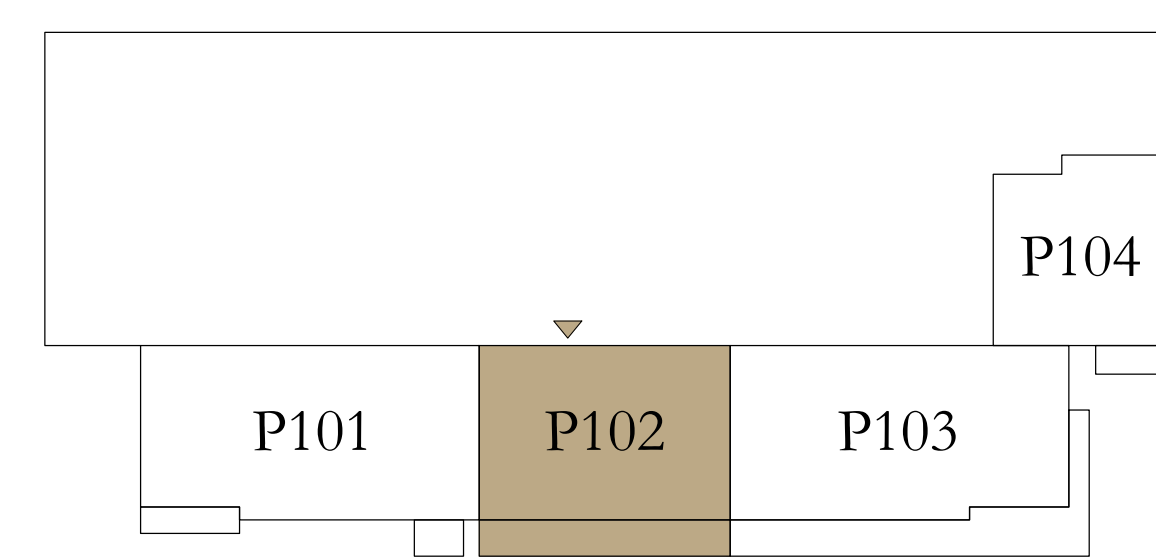
## 2 BEDROOM

PODIUM 01

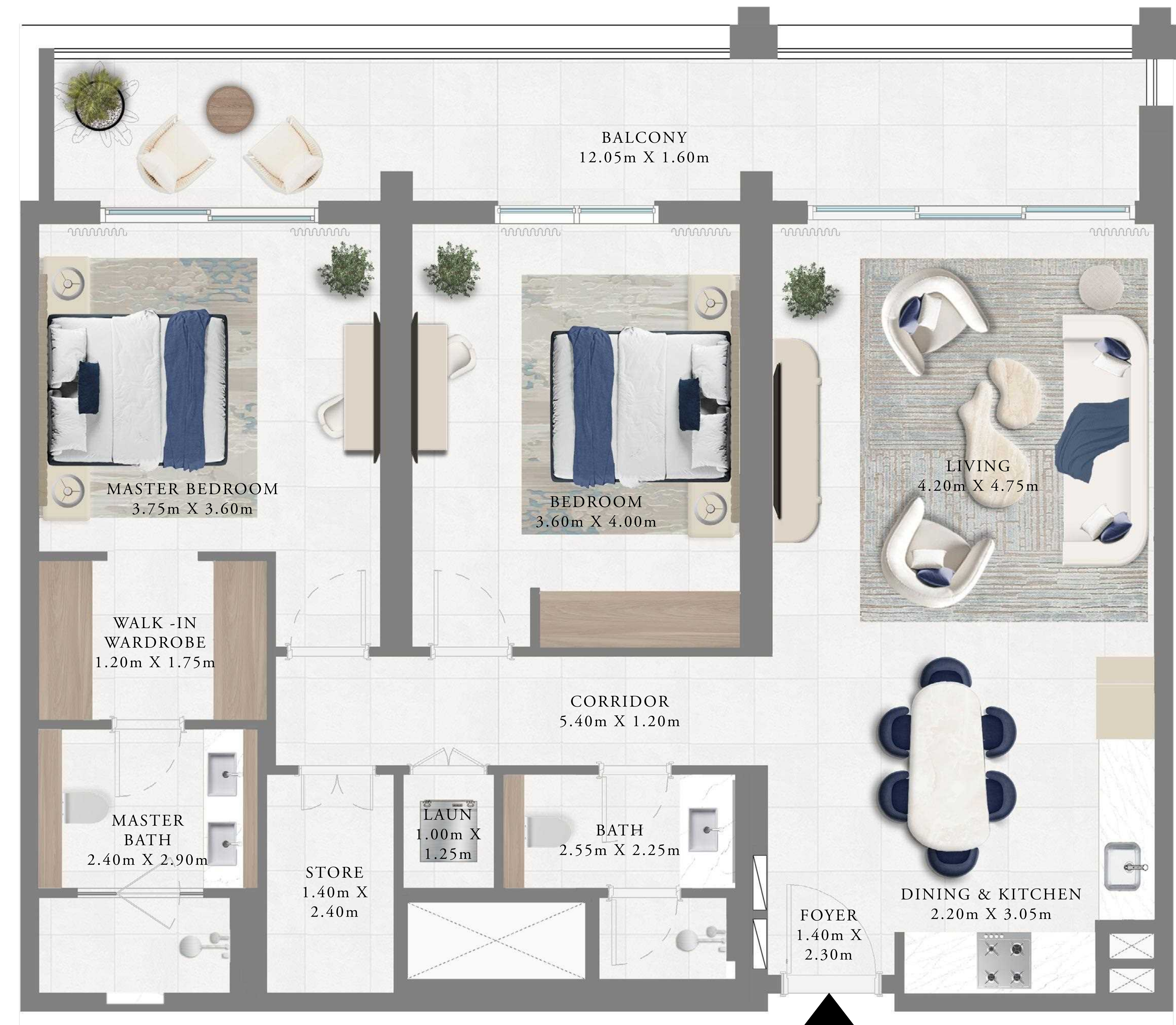
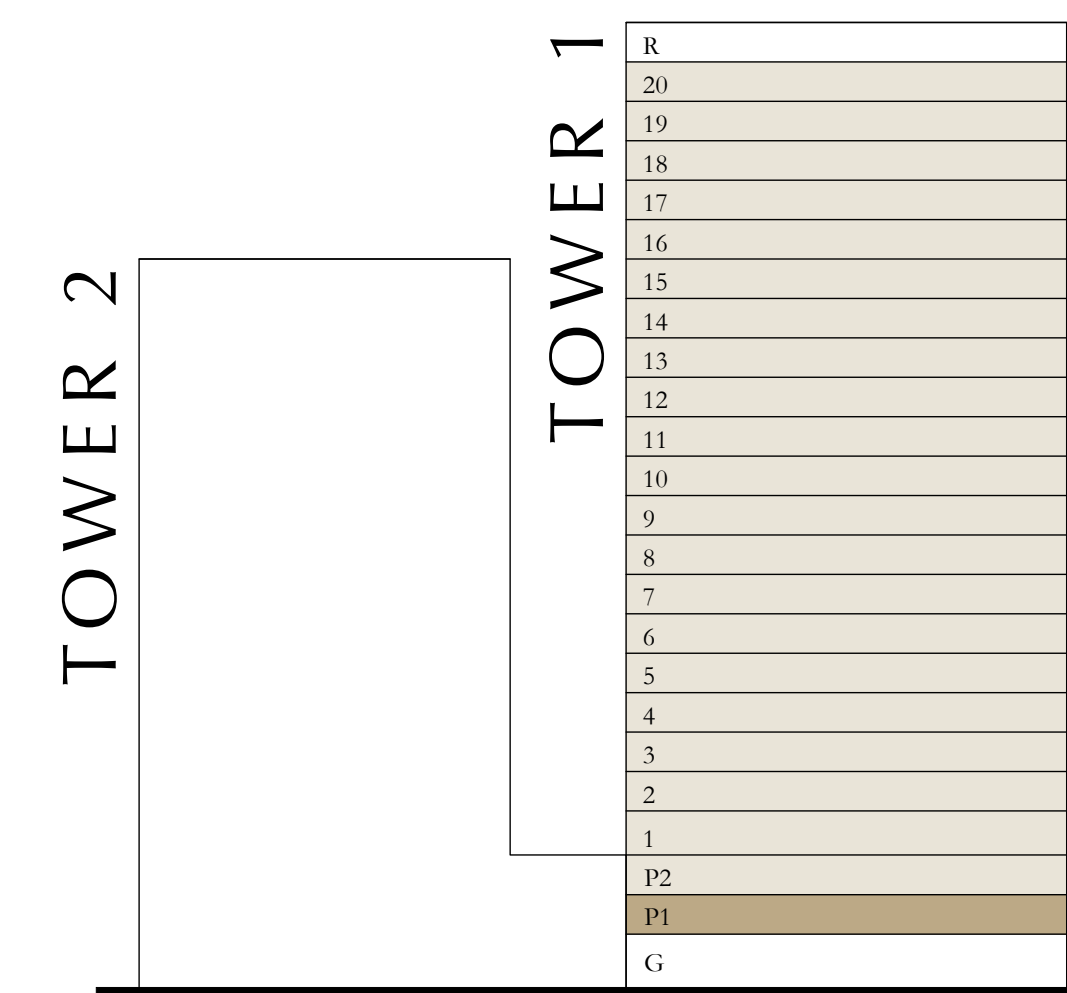
UNIT 02

SUITE AREA	1124.08 SQ.FT.	104.43 SQ.M.
BALCONY AREA	238.96 SQ.FT.	22.20 SQ.M.
TOTAL AREA	1363.04 SQ.FT.	126.63 SQ.M.

KEY PLAN LEVEL  
PODIUM 01



KEY SECTION



Disclaimer : All dimensions are in imperial and metric, and measured from finish to finish excluding construction tolerances. 2. All materials, dimensions, and drawings are approximate only. 3. Information is subject to change without notice, at developer's absolute discretion. 4. Actual area may vary from the stated area. 5. Drawings not to scale. 6. All images used are for illustrative purposes only and do not represent the actual size, features, specifications, fittings, and furnishings. 7. The developer reserves the right to make revisions / alterations, at it's absolute discretion, without any liability whatsoever.

# ALTUS

DUBAI CREEK HARBOUR

TOWER 1

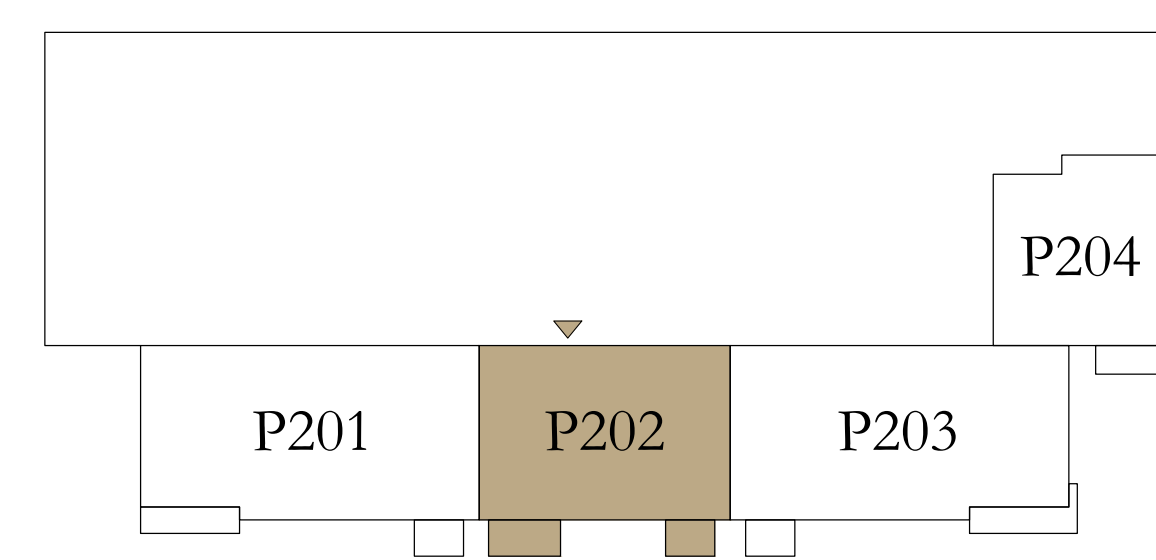
## 2 BEDROOM

PODIUM 02

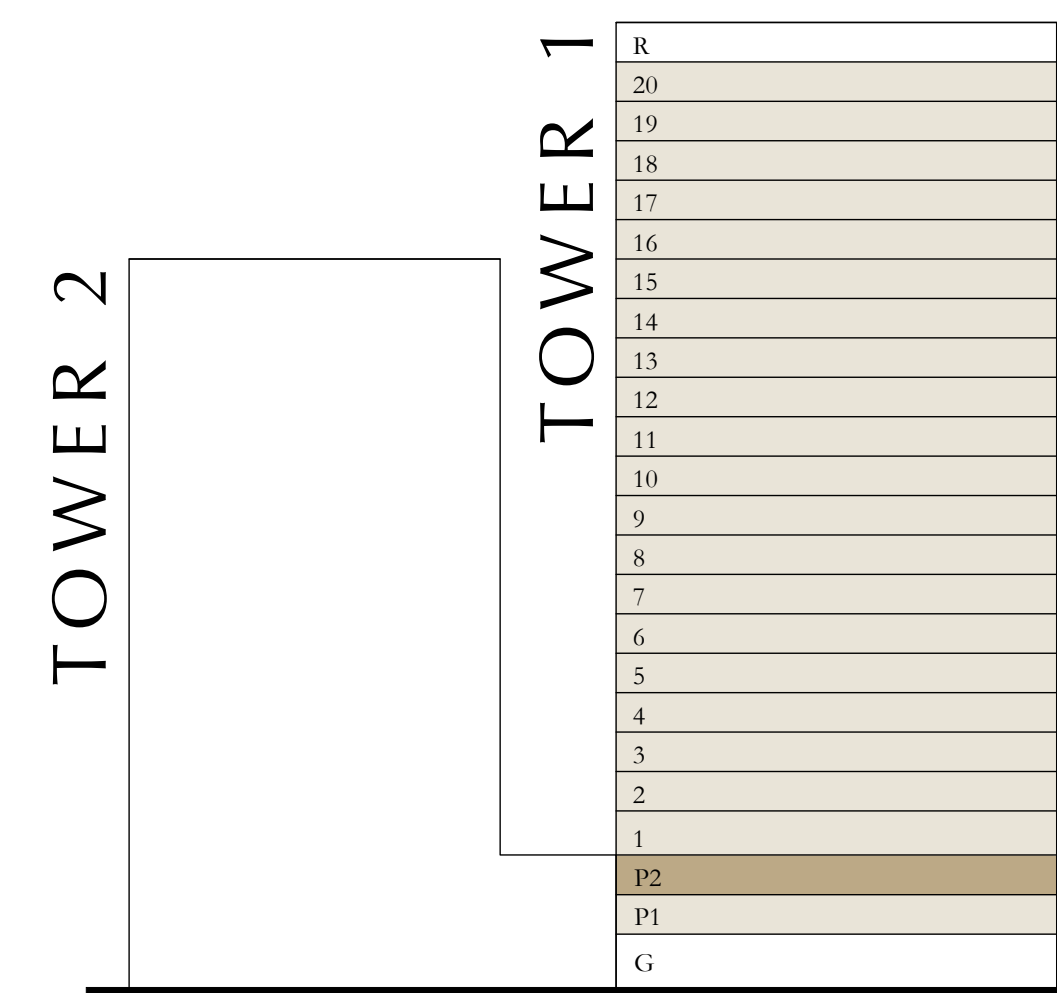
UNIT 02

SUITE AREA	1124.08 SQ.FT.	104.43 SQ.M.
BALCONY AREA	102.90 SQ.FT.	9.56 SQ.M.
TOTAL AREA	1226.98 SQ.FT.	113.99 SQ.M.

KEY PLAN LEVEL  
PODIUM 02



KEY SECTION



Disclaimer : All dimensions are in imperial and metric, and measured from finish to finish excluding construction tolerances. 2. All materials, dimensions, and drawings are approximate only. 3. Information is subject to change without notice, at developer's absolute discretion. 4. Actual area may vary from the stated area. 5. Drawings not to scale. 6. All images used are for illustrative purposes only and do not represent the actual size, features, specifications, fittings, and furnishings. 7. The developer reserves the right to make revisions / alterations, at it's absolute discretion, without any liability whatsoever.

# ALTUS

DUBAI CREEK HARBOUR

TOWER 1

## 2 BEDROOM

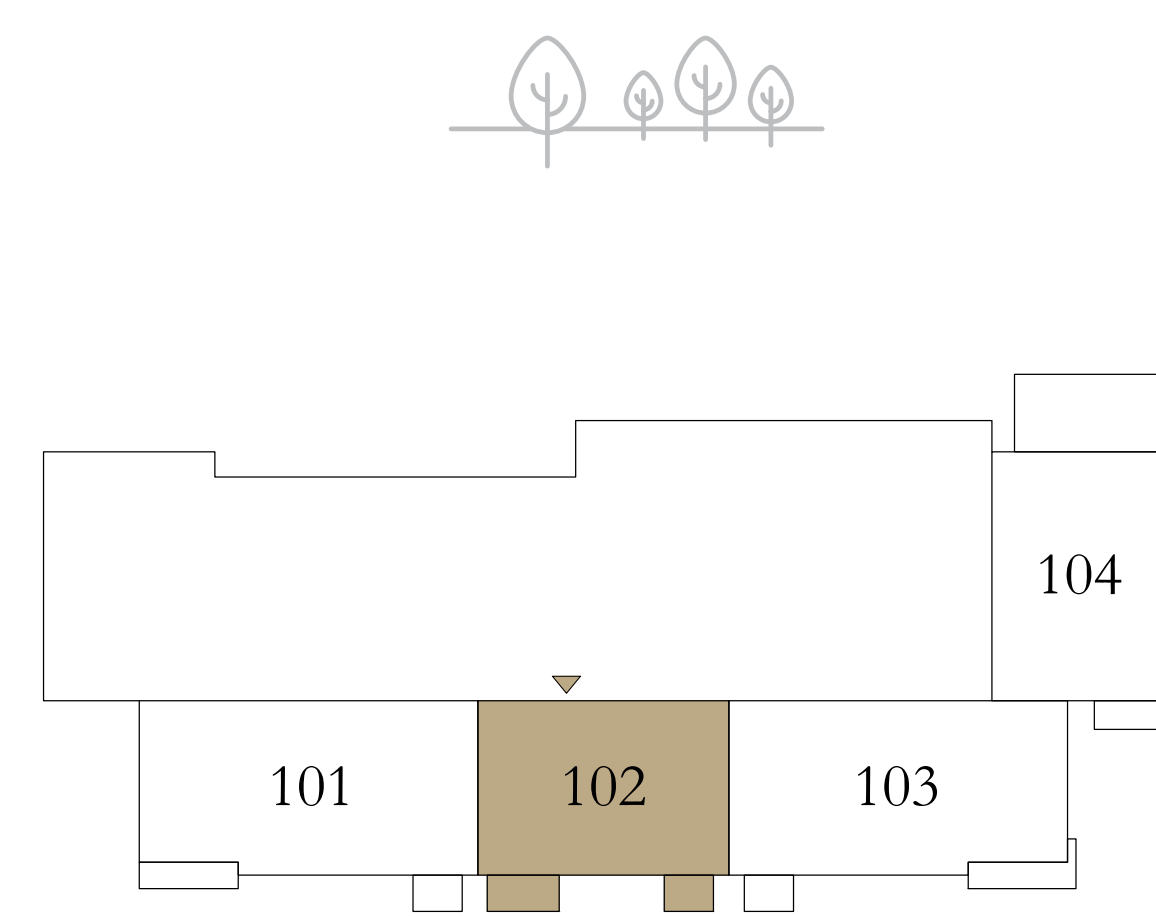
LEVEL 01

UNIT 02

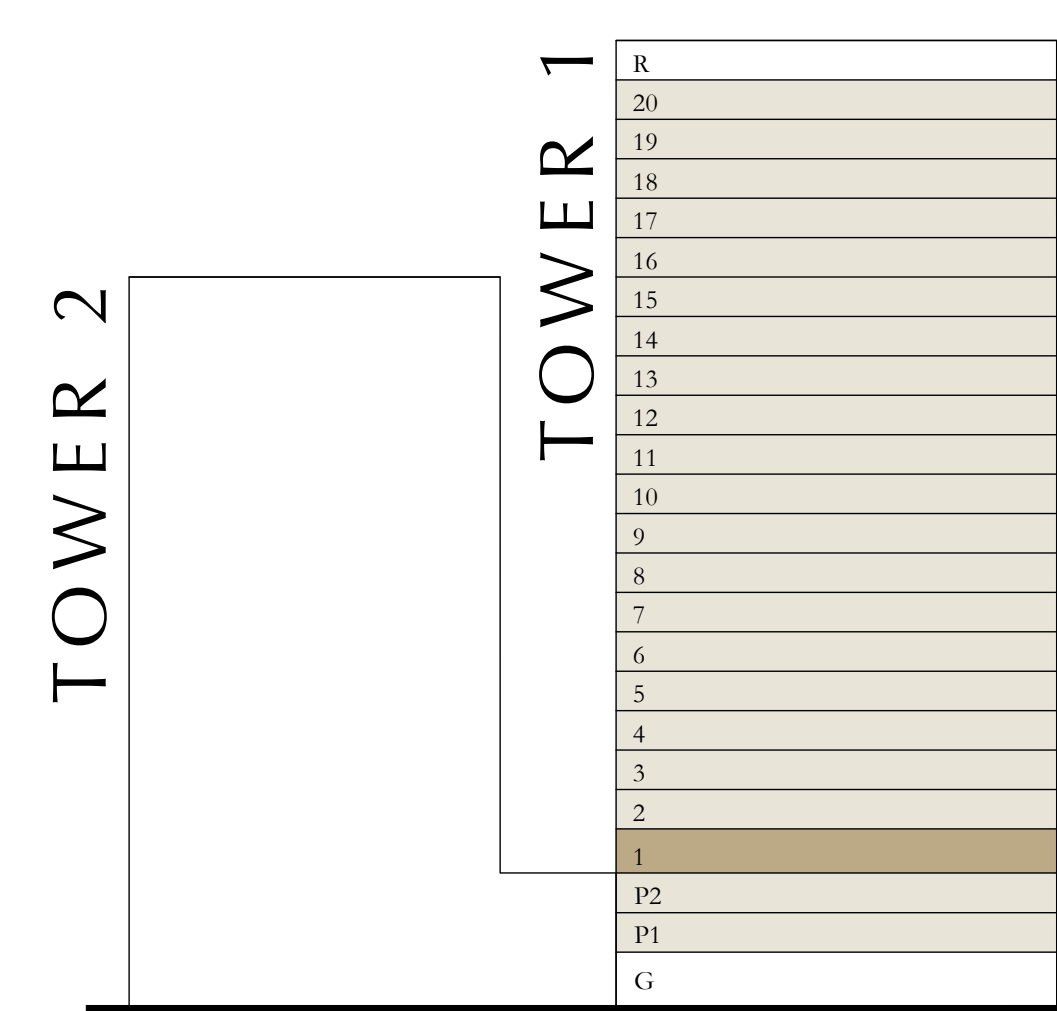
SUITE AREA	1124.61 SQ.FT.	104.48 SQ.M.
BALCONY AREA	102.90 SQ.FT.	9.56 SQ.M.
TOTAL AREA	1227.51 SQ.FT.	114.04 SQ.M.

KEY PLAN LEVEL

01



KEY SECTION



Disclaimer : All dimensions are in imperial and metric, and measured from finish to finish excluding construction tolerances. 2. All materials, dimensions, and drawings are approximate only. 3. Information is subject to change without notice, at developer's absolute discretion. 4. Actual area may vary from the stated area. 5. Drawings not to scale. 6. All images used are for illustrative purposes only and do not represent the actual size, features, specifications, fittings, and furnishings. 7. The developer reserves the right to make revisions / alterations, at it's absolute discretion, without any liability whatsoever.

# ALTUS

DUBAI CREEK HARBOUR

TOWER 1

## 2 BEDROOM

LEVEL 02-20

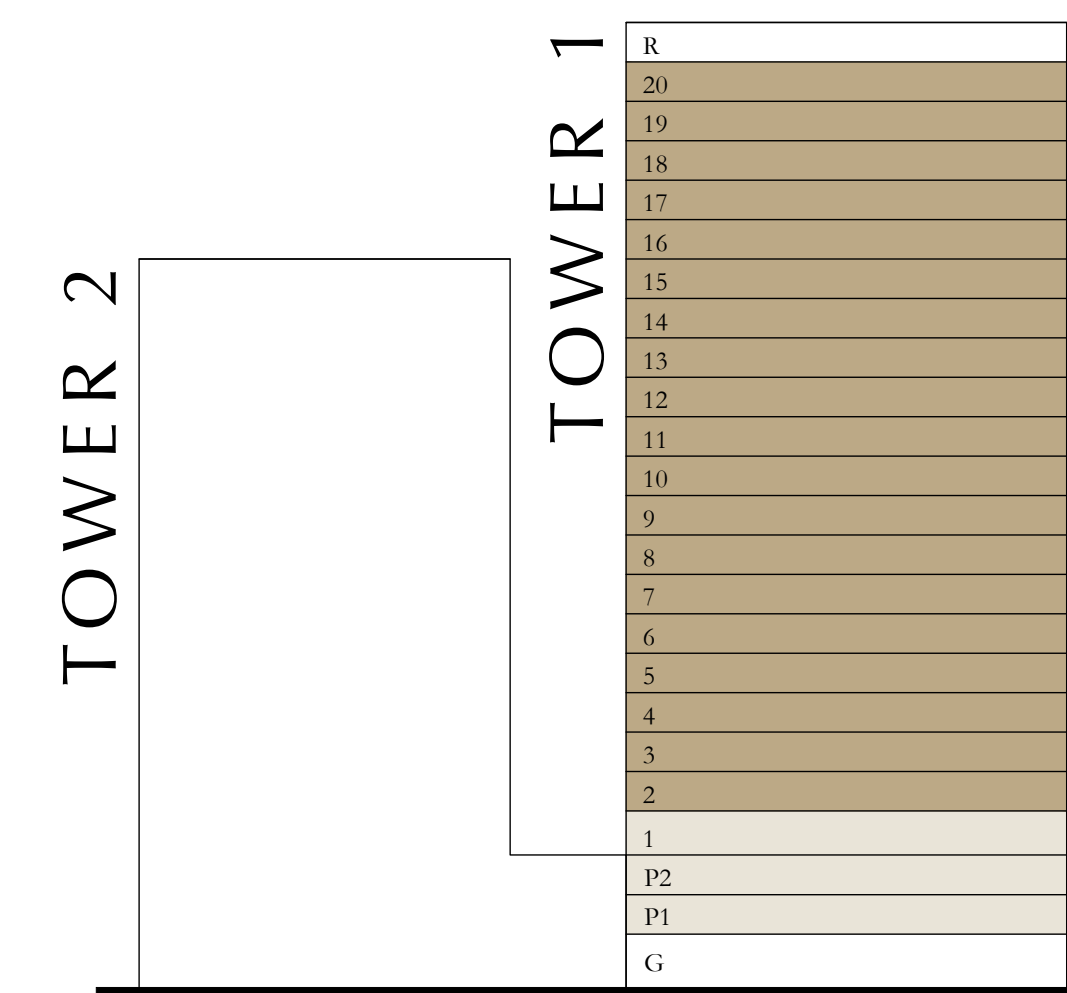
UNIT 06

SUITE AREA	1124.51 to 1124.61 SQ.FT.	104.47 to 104.48 SQ.M.
BALCONY AREA	102.90 SQ.FT.	9.56 SQ.M.
TOTAL AREA	1227.41 to 1227.51 SQ.FT.	114.03 to 114.04 SQ.M.

KEY PLAN LEVEL

02-20

KEY SECTION



Disclaimer : All dimensions are in imperial and metric, and measured from finish to finish excluding construction tolerances. 2. All materials, dimensions, and drawings are approximate only. 3. Information is subject to change without notice, at developer's absolute discretion. 4. Actual area may vary from the stated area. 5. Drawings not to scale. 6. All images used are for illustrative purposes only and do not represent the actual size, features, specifications, fittings, and furnishings. 7. The developer reserves the right to make revisions / alterations, at it's absolute discretion, without any liability whatsoever.

# ALTUS

DUBAI CREEK HARBOUR

TOWER 1

## 3 BEDROOM

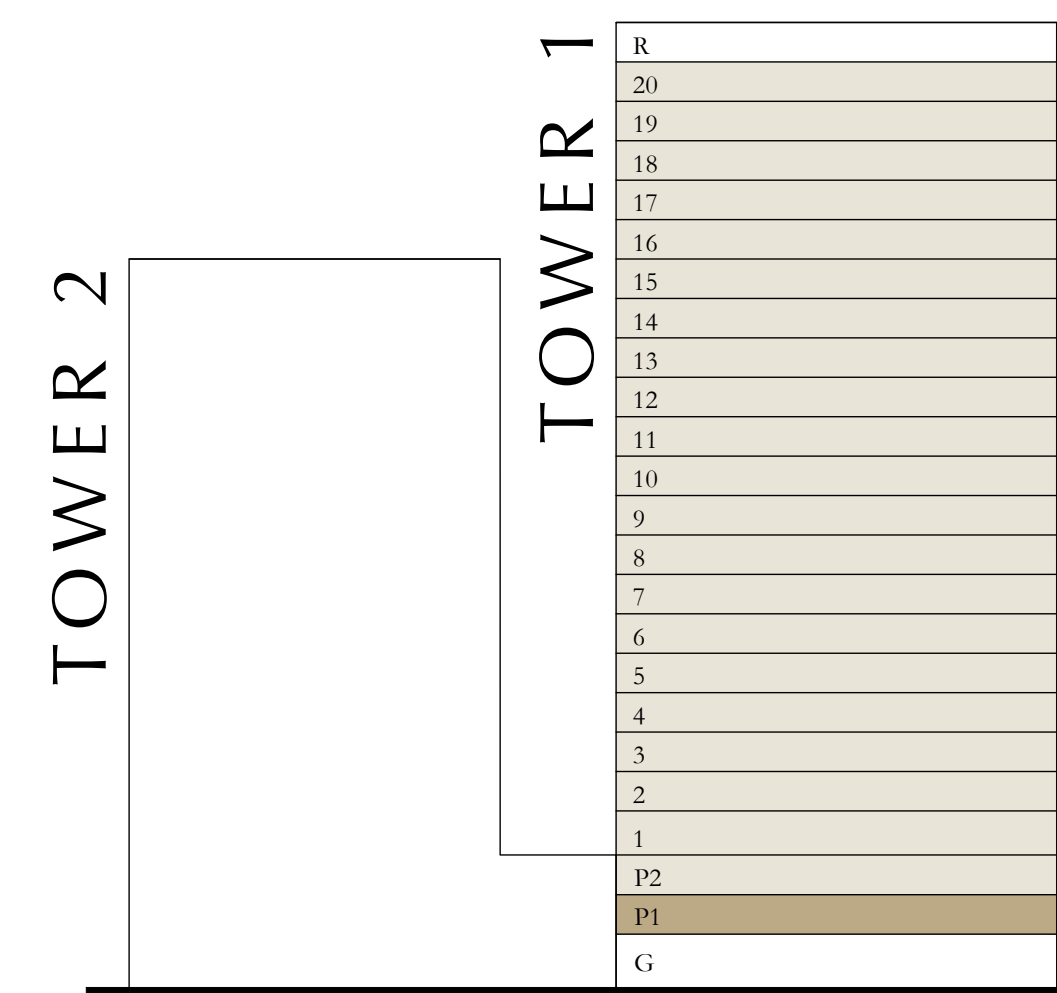
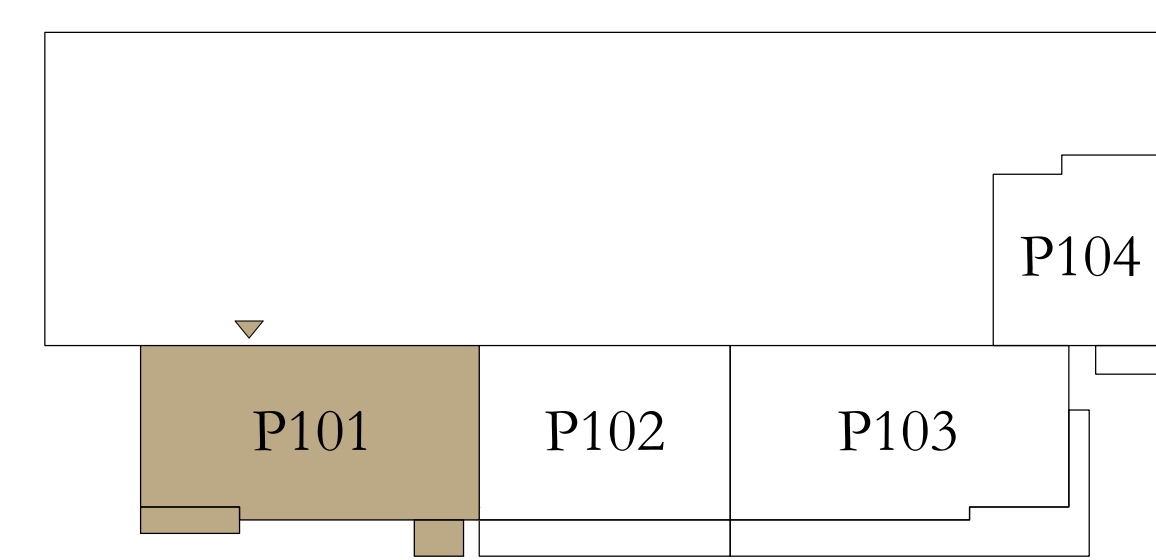
PODIUM 01

UNIT 01

SUITE AREA	1491.77 SQ.FT.	138.59 SQ.M.
BALCONY AREA	104.52 SQ.FT.	9.71 SQ.M.
TOTAL AREA	1596.29 SQ.FT.	148.30 SQ.M.

KEY PLAN LEVEL  
PODIUM 01

KEY SECTION



Disclaimer : All dimensions are in imperial and metric, and measured from finish to finish excluding construction tolerances. 2. All materials, dimensions, and drawings are approximate only. 3. Information is subject to change without notice, at developer's absolute discretion. 4. Actual area may vary from the stated area. 5. Drawings not to scale. 6. All images used are for illustrative purposes only and do not represent the actual size, features, specifications, fittings, and furnishings. 7. The developer reserves the right to make revisions / alterations, at it's absolute discretion, without any liability whatsoever.

# ALTUS

DUBAI CREEK HARBOUR

TOWER 1

## 3 BEDROOM

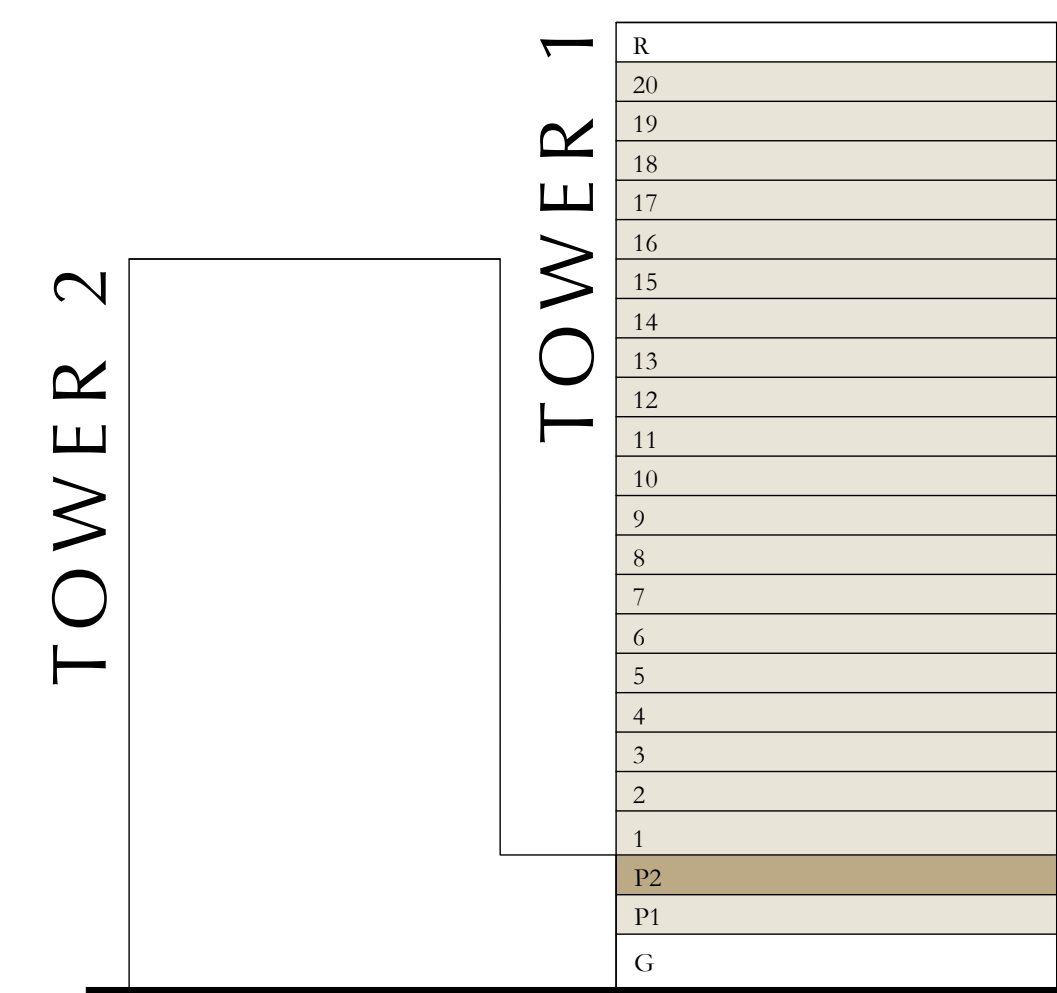
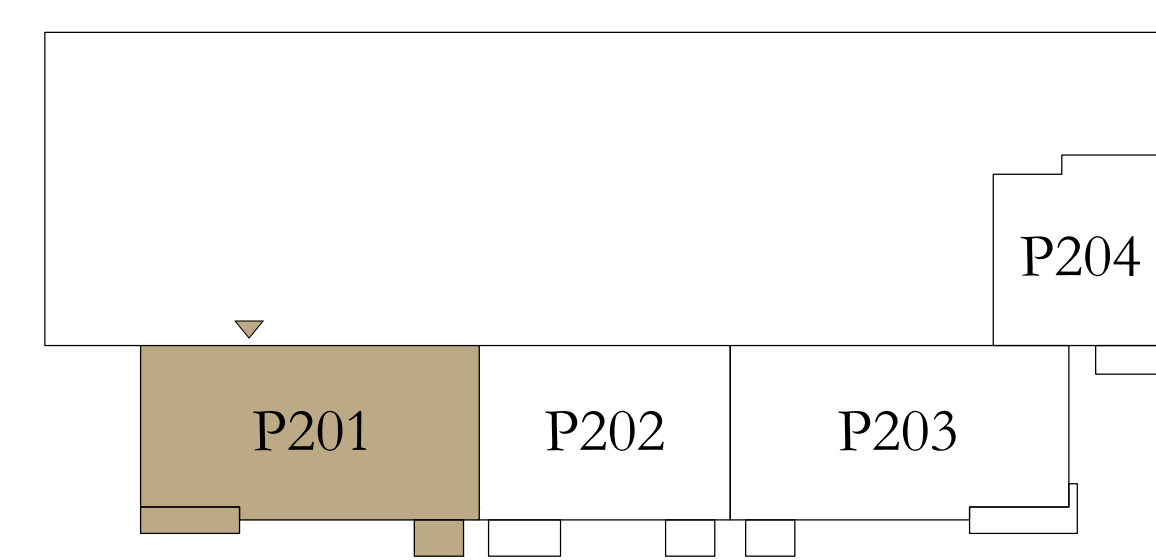
PODIUM 02

UNIT 01

SUITE AREA	1490.48 SQ.FT.	138.47 SQ.M.
BALCONY AREA	105.70 SQ.FT.	9.82 SQ.M.
TOTAL AREA	1596.18 SQ.FT.	148.29 SQ.M.

KEY PLAN LEVEL  
PODIUM 02

KEY SECTION



Disclaimer : All dimensions are in imperial and metric, and measured from finish to finish excluding construction tolerances. 2. All materials, dimensions, and drawings are approximate only. 3. Information is subject to change without notice, at developer's absolute discretion. 4. Actual area may vary from the stated area. 5. Drawings not to scale. 6. All images used are for illustrative purposes only and do not represent the actual size, features, specifications, fittings, and furnishings. 7. The developer reserves the right to make revisions / alterations, at it's absolute discretion, without any liability whatsoever.



# ALTUS

DUBAI CREEK HARBOUR

TOWER 1

## 3 BEDROOM

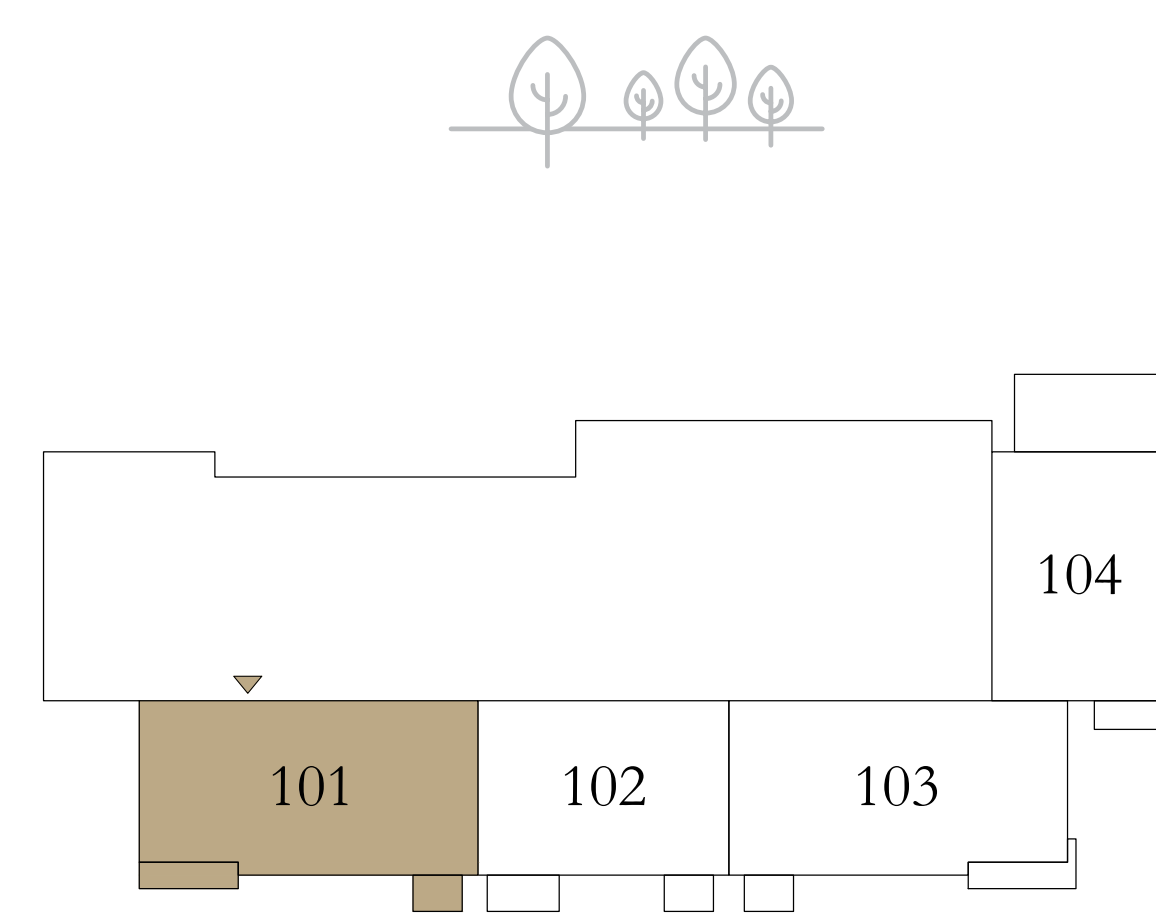
LEVEL 01

UNIT 01

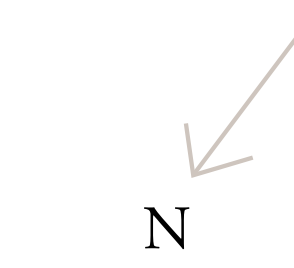
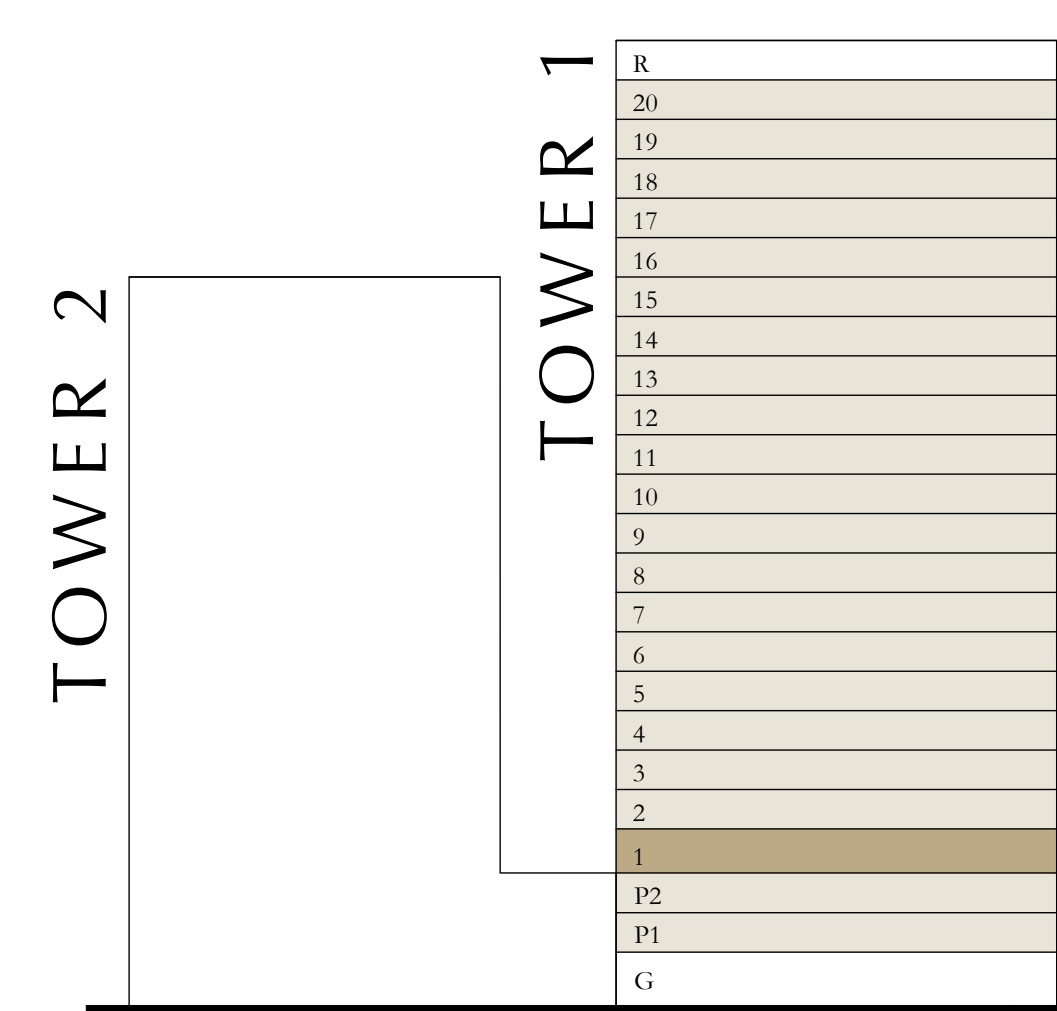
SUITE AREA	1491.66 SQ.FT.	138.58 SQ.M.
BALCONY AREA	113.67 SQ.FT.	10.56 SQ.M.
TOTAL AREA	1605.33 SQ.FT.	149.14 SQ.M.

KEY PLAN LEVEL

01



KEY SECTION



Disclaimer : All dimensions are in imperial and metric, and measured from finish to finish excluding construction tolerances. 2. All materials, dimensions, and drawings are approximate only. 3. Information is subject to change without notice, at developer's absolute discretion. 4. Actual area may vary from the stated area. 5. Drawings not to scale. 6. All images used are for illustrative purposes only and do not represent the actual size, features, specifications, fittings, and furnishings. 7. The developer reserves the right to make revisions / alterations, at it's absolute discretion, without any liability whatsoever.

# ALTUS

DUBAI CREEK HARBOUR

TOWER 1

## 3 BEDROOM

LEVEL 02-20

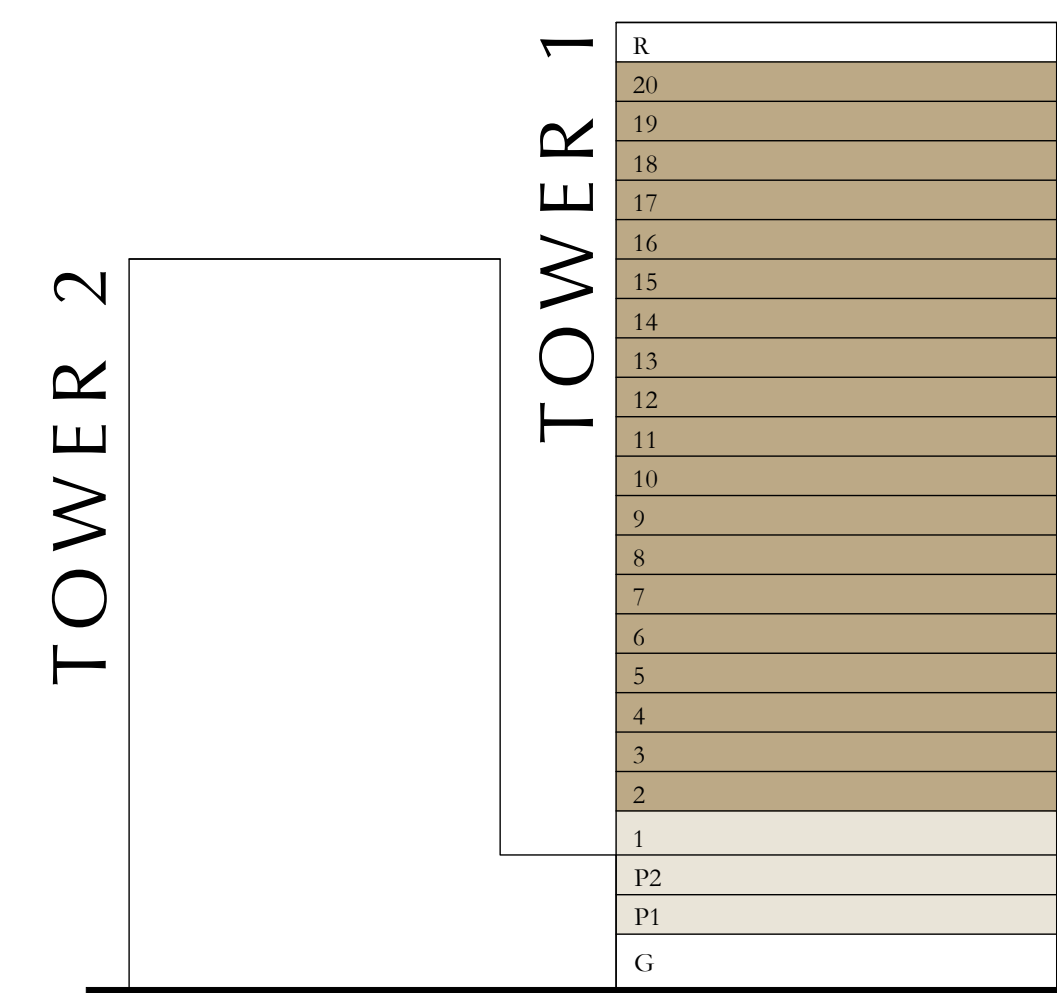
UNIT 05

SUITE AREA	1492.31 to 1492.52 SQ.FT.	138.64 to 138.66 SQ.M.
BALCONY AREA	120.77 SQ.FT.	11.22 SQ.M.
TOTAL AREA	1613.08 to 1613.29 SQ.FT.	149.86 to 149.88 SQ.M.

KEY PLAN LEVEL

02-20

KEY SECTION



Disclaimer : All dimensions are in imperial and metric, and measured from finish to finish excluding construction tolerances. 2. All materials, dimensions, and drawings are approximate only. 3. Information is subject to change without notice, at developer's absolute discretion. 4. Actual area may vary from the stated area. 5. Drawings not to scale. 6. All images used are for illustrative purposes only and do not represent the actual size, features, specifications, fittings, and furnishings. 7. The developer reserves the right to make revisions / alterations, at its absolute discretion, without any liability whatsoever.

# ALTUS

DUBAI CREEK HARBOUR

TOWER 1

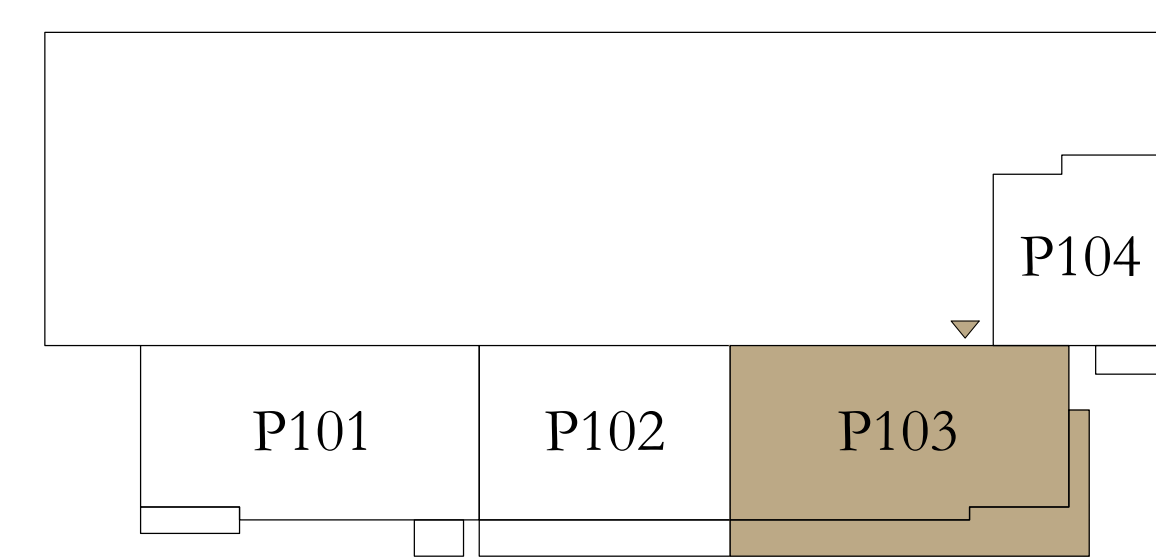
## 3 BEDROOM

PODIUM 01

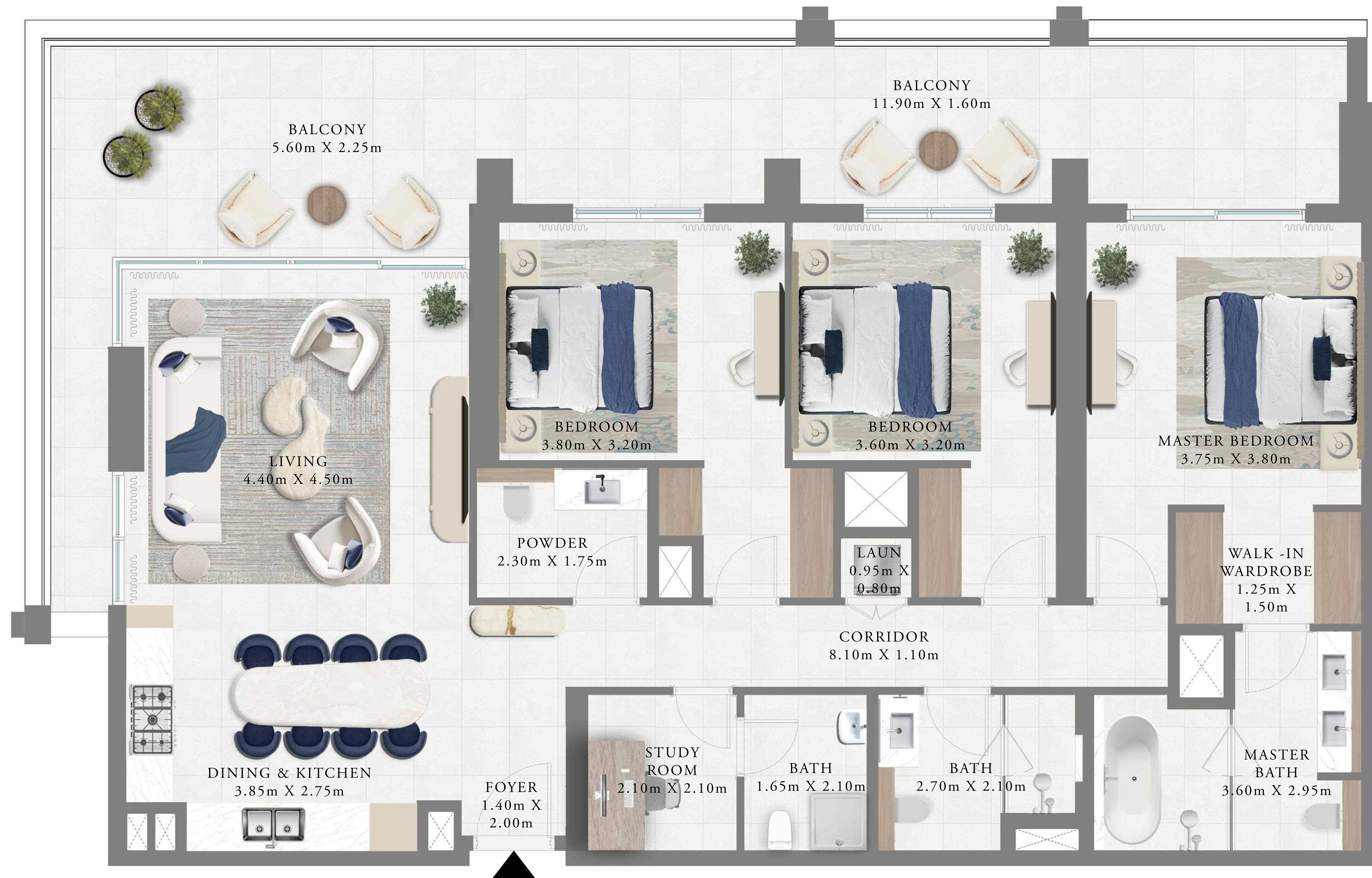
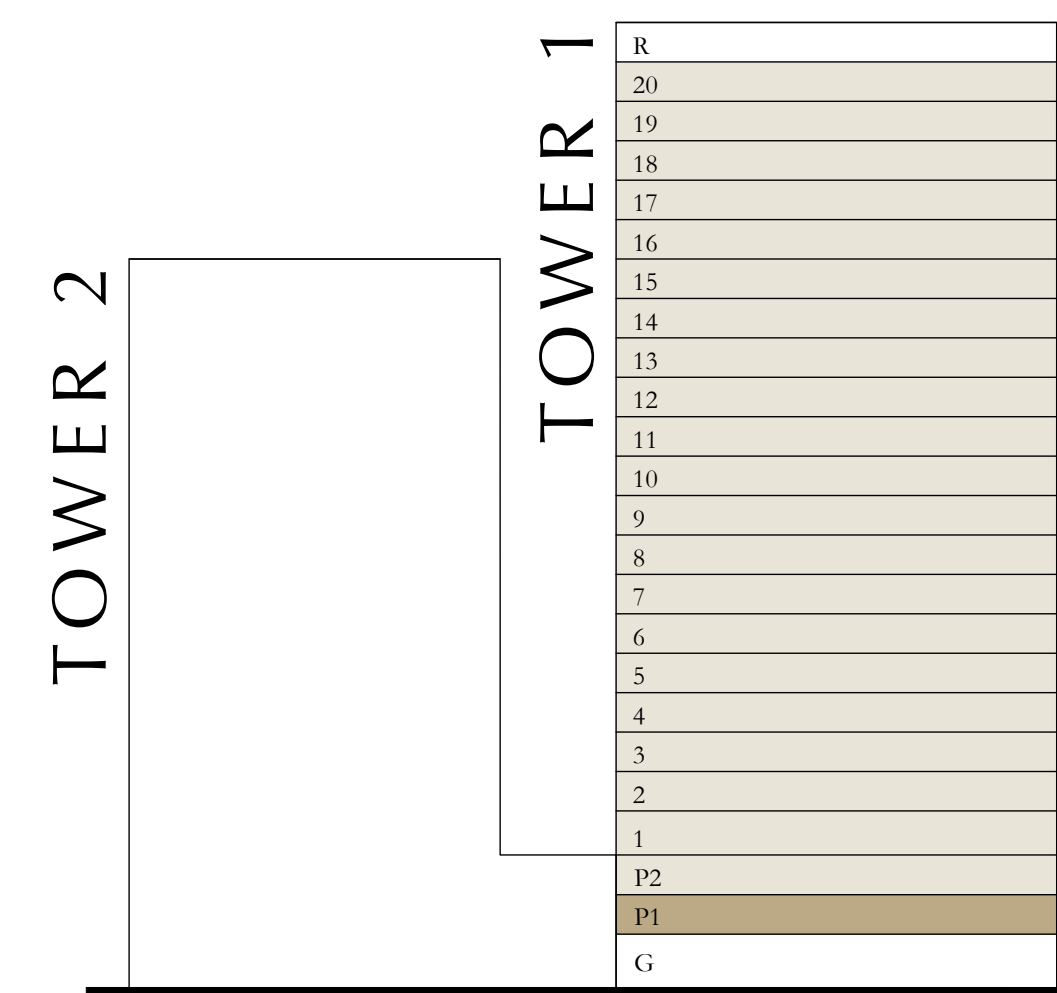
UNIT 03

SUITE AREA	1493.92 SQ.FT.	138.79 SQ.M.
BALCONY AREA	433.14 SQ.FT.	40.24 SQ.M.
TOTAL AREA	1927.06 SQ.FT.	179.03 SQ.M.

KEY PLAN LEVEL  
PODIUM 01



KEY SECTION



Disclaimer : All dimensions are in imperial and metric, and measured from finish to finish excluding construction tolerances. 2. All materials, dimensions, and drawings are approximate only. 3. Information is subject to change without notice, at developer's absolute discretion. 4. Actual area may vary from the stated area. 5. Drawings not to scale. 6. All images used are for illustrative purposes only and do not represent the actual size, features, specifications, fittings, and furnishings. 7. The developer reserves the right to make revisions / alterations, at it's absolute discretion, without any liability whatsoever.

# ALTUS

DUBAI CREEK HARBOUR

TOWER 1

## 3 BEDROOM

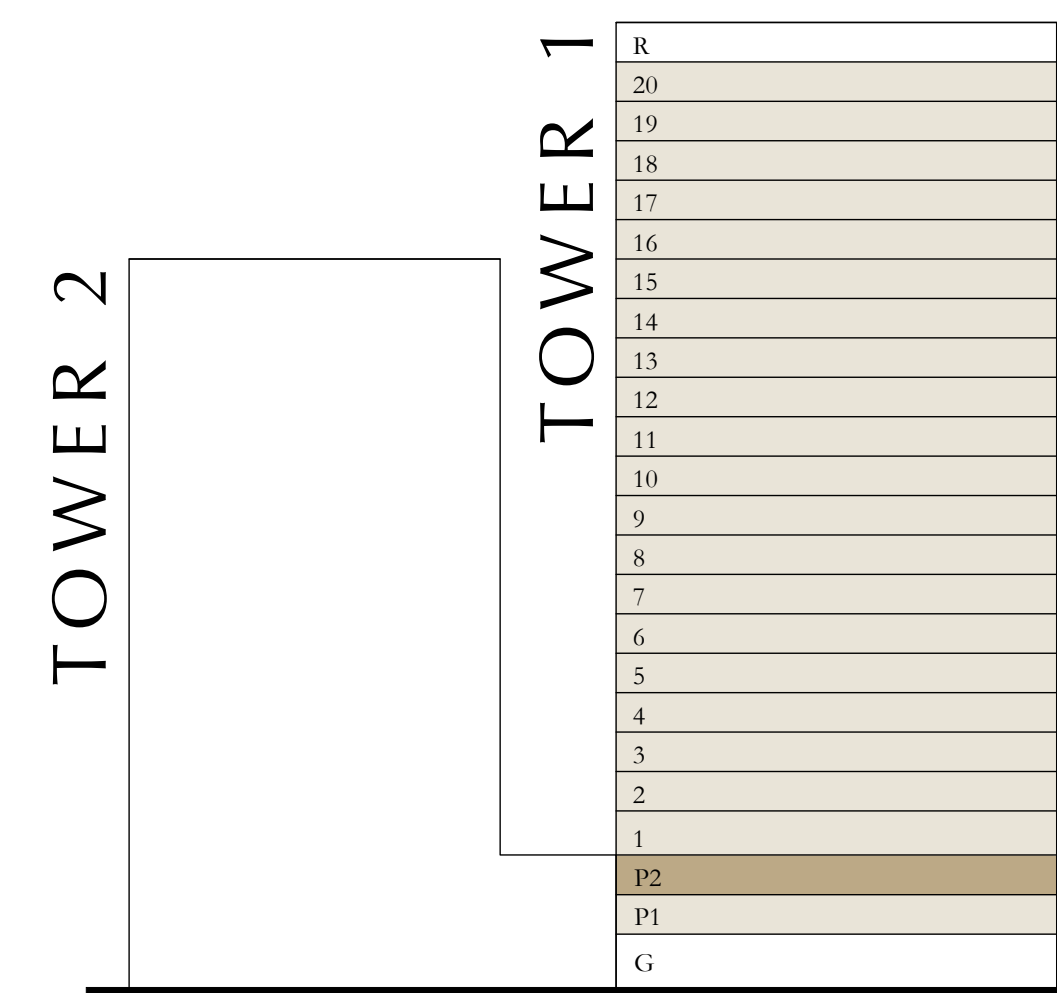
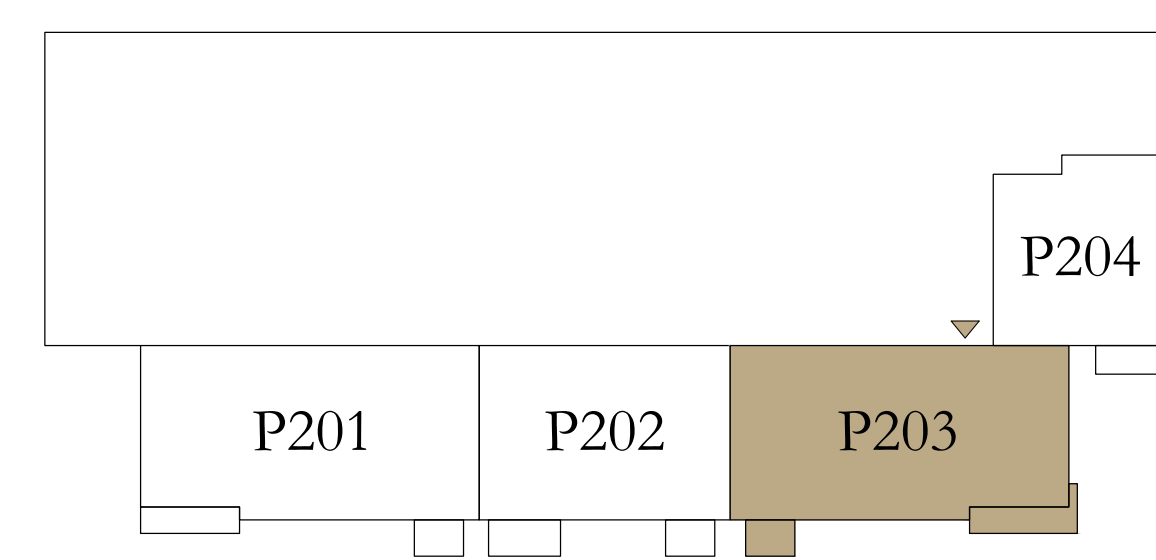
PODIUM 02

UNIT 03

SUITE AREA	1491.99 SQ.FT.	138.61 SQ.M.
BALCONY AREA	121.09 SQ.FT.	11.25 SQ.M.
TOTAL AREA	1613.08 SQ.FT.	149.86 SQ.M.

KEY PLAN LEVEL  
PODIUM 02

KEY SECTION



Disclaimer : All dimensions are in imperial and metric, and measured from finish to finish excluding construction tolerances. 2. All materials, dimensions, and drawings are approximate only. 3. Information is subject to change without notice, at developer's absolute discretion. 4. Actual area may vary from the stated area. 5. Drawings not to scale. 6. All images used are for illustrative purposes only and do not represent the actual size, features, specifications, fittings, and furnishings. 7. The developer reserves the right to make revisions / alterations, at it's absolute discretion, without any liability whatsoever.

# ALTUS

DUBAI CREEK HARBOUR

TOWER 1

## 3 BEDROOM

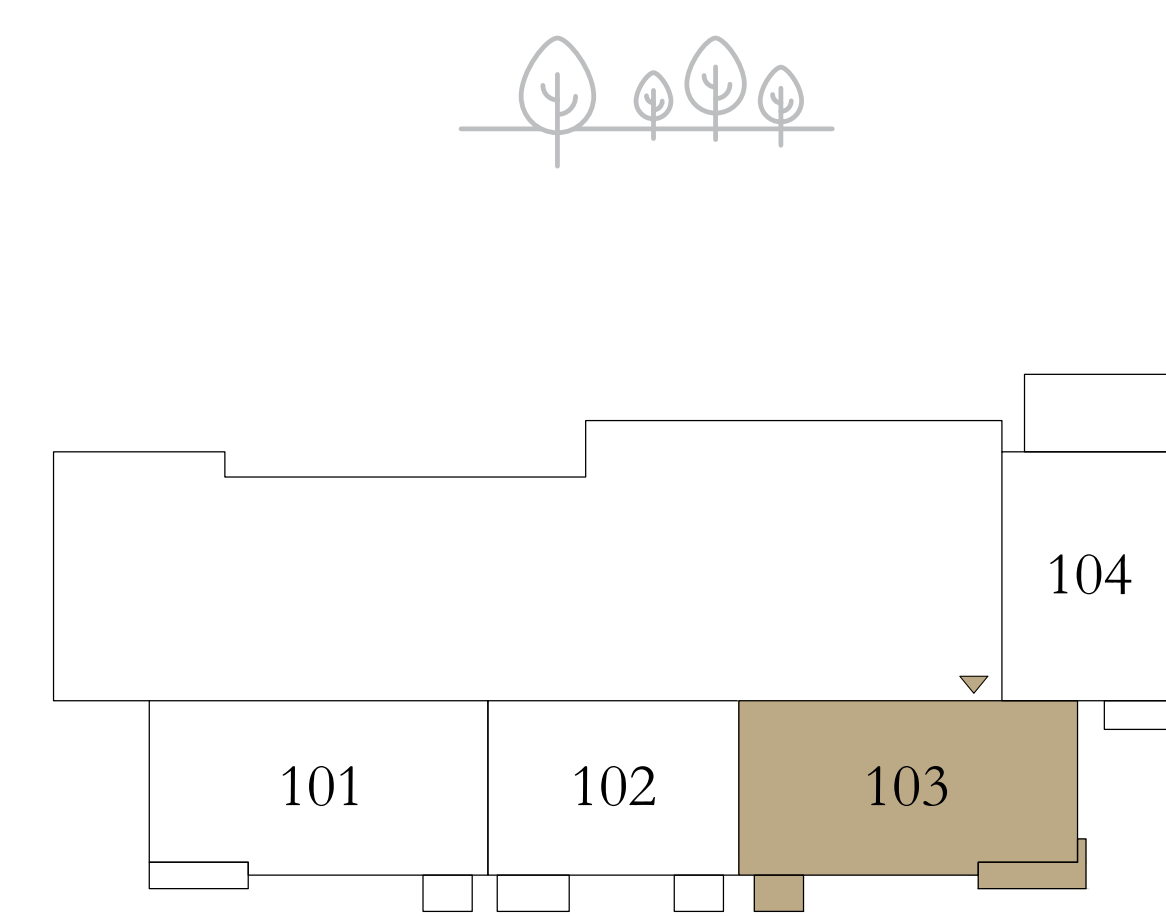
LEVEL 01

UNIT 03

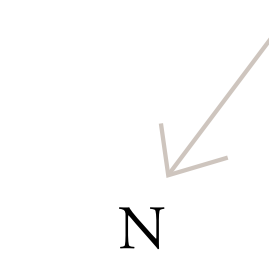
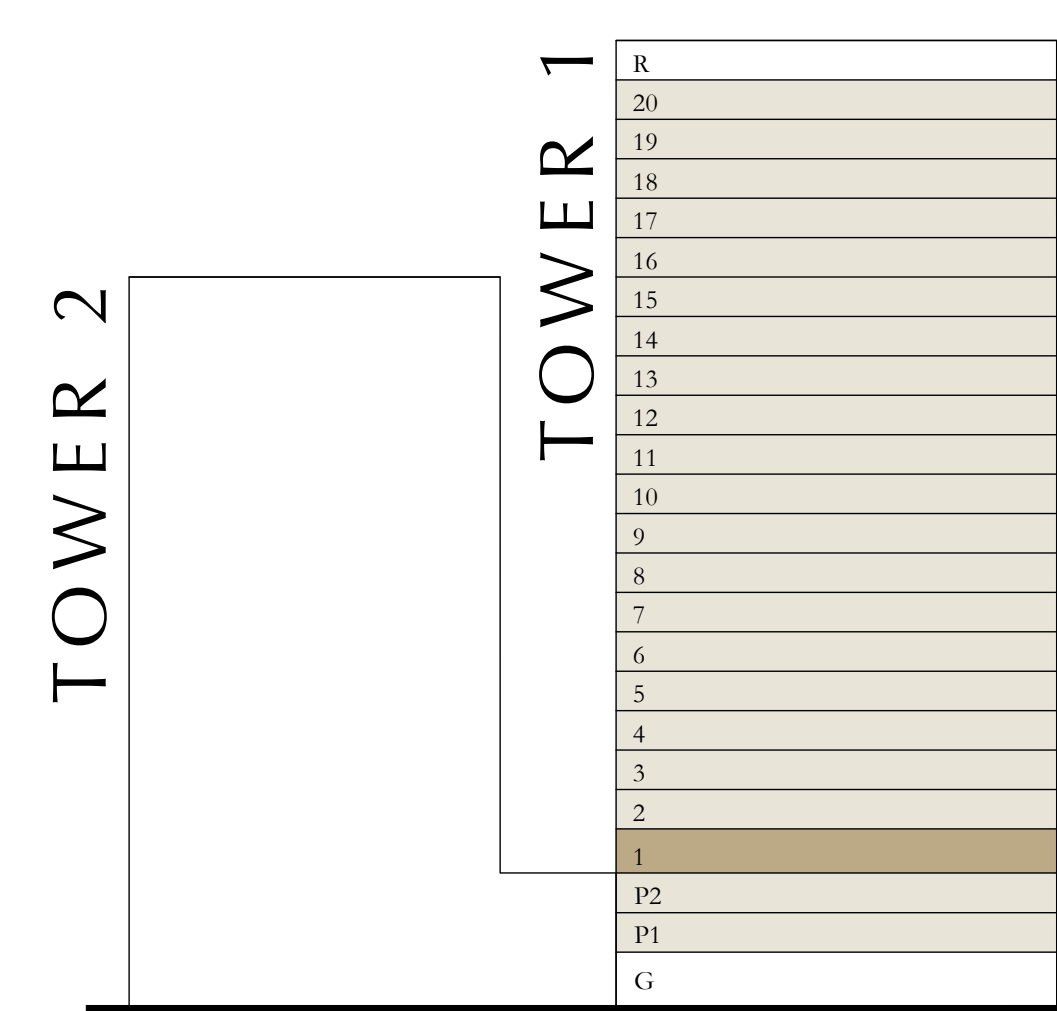
SUITE AREA	1492.52 SQ.FT.	138.66 SQ.M.
BALCONY AREA	120.66 SQ.FT.	11.21 SQ.M.
TOTAL AREA	1613.18 SQ.FT.	149.87 SQ.M.

KEY PLAN LEVEL

01



KEY SECTION



Disclaimer : All dimensions are in imperial and metric, and measured from finish to finish excluding construction tolerances. 2. All materials, dimensions, and drawings are approximate only. 3. Information is subject to change without notice, at developer's absolute discretion. 4. Actual area may vary from the stated area. 5. Drawings not to scale. 6. All images used are for illustrative purposes only and do not represent the actual size, features, specifications, fittings, and furnishings. 7. The developer reserves the right to make revisions / alterations, at it's absolute discretion, without any liability whatsoever.

# ALTUS

DUBAI CREEK HARBOUR

TOWER 1

## 3 BEDROOM

LEVEL 02-20

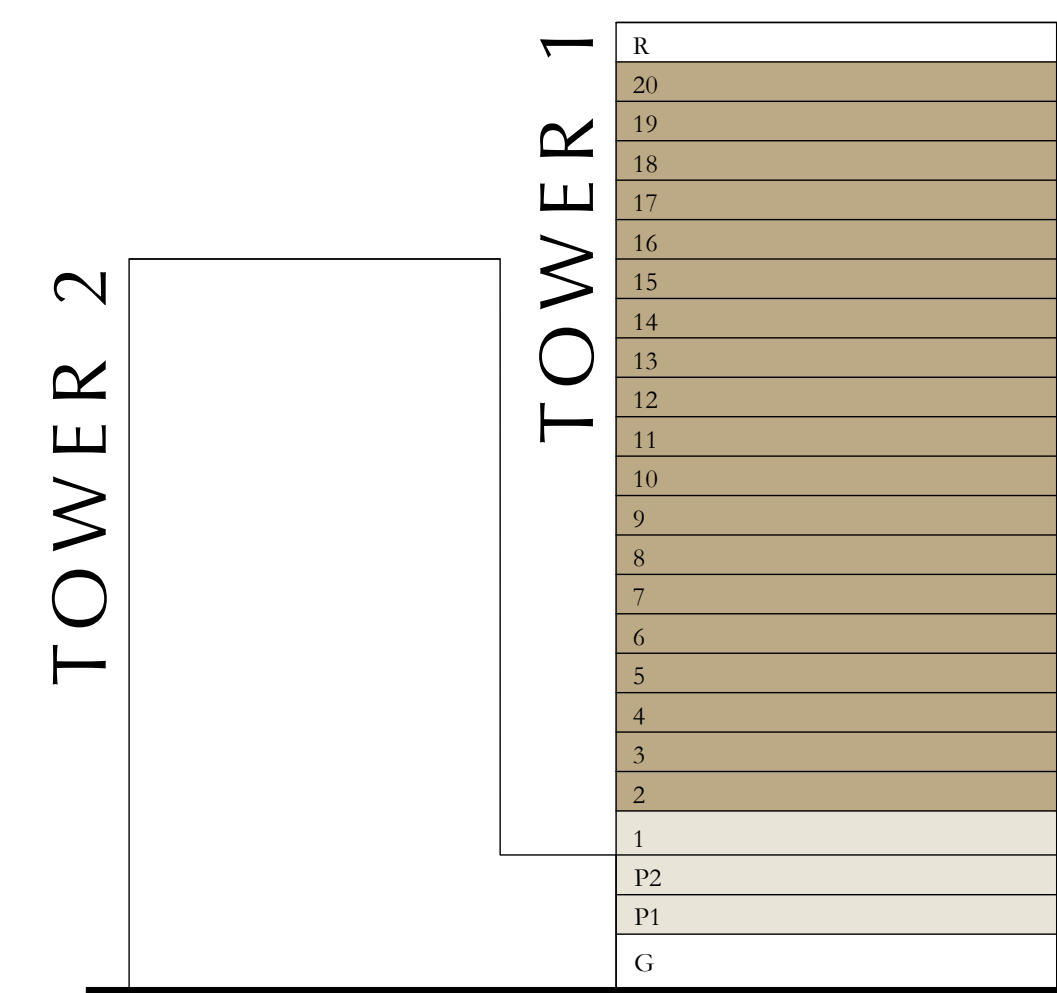
UNIT 07

SUITE AREA	1492.09 SQ.FT.	138.62 SQ.M.
BALCONY AREA	120.88 SQ.FT.	11.23 SQ.M.
TOTAL AREA	1612.97 SQ.FT.	149.85 SQ.M.

KEY PLAN LEVEL

02-20

KEY SECTION



Disclaimer : All dimensions are in imperial and metric, and measured from finish to finish excluding construction tolerances. 2. All materials, dimensions, and drawings are approximate only. 3. Information is subject to change without notice, at developer's absolute discretion. 4. Actual area may vary from the stated area. 5. Drawings not to scale. 6. All images used are for illustrative purposes only and do not represent the actual size, features, specifications, fittings, and furnishings. 7. The developer reserves the right to make revisions / alterations, at it's absolute discretion, without any liability whatsoever.