

# COVENTRY



A PROJECT BY





A woman with her hair pulled back, wearing a white, long-sleeved, backless dress, stands on a sandy beach. She is holding a large, flowing piece of white fabric that billows out across the sand and into the air. The background is a clear blue sky with a few wispy clouds. The overall mood is serene and elegant.

A NEW ERA OF  
LUXURY LIVING



# DUBAI

## A CITY OF LIMITLESS POSSIBILITIES

Dubai, a global hub of innovation and ambition, is celebrated for its tax-friendly policies, strategic location, and futuristic developments. Offering a vibrant lifestyle of luxury and opportunity, it is home to a diverse international community. From world-class experiences to unmatched sophistication, Dubai invites you to live in a city where dreams take shape and possibilities are endless.





# THE FUTURE OF LIVING

Designed to support a balanced lifestyle, Dubai South features residential, commercial, and leisure spaces, fostering a vibrant and inclusive environment. With its emphasis on sustainability and innovation, it's a community where families and professionals can thrive, making it the ultimate destination for modern living.

A large, three-dimensional sign for 'Dubai South' is the central focus. The letters are grey with a dark shadow on the right side, giving them a 3D appearance. The sign is set against a clear blue sky with light, wispy clouds. In the background, there are several palm trees and a road with a blue and white striped barrier. The foreground shows some green shrubs and a concrete base for the sign.

DUBAI  
SOUTH



A woman and a young girl are shown from the chest up, looking upwards with expressions of joy and wonder. The girl, on the left, is holding a blue toy airplane with orange speckles. The woman, on the right, has her arm around the girl's shoulder. They are set against a bright, golden sunset sky with soft clouds. The overall mood is one of hope and aspiration.

# WHERE CONNECTIONS TAKE FLIGHT

Perfectly positioned near Expo City Dubai, the visionary legacy of Expo 2020, this community offers seamless access to Al Maktoum International Airport and Dubai's key attractions. Enjoy unparalleled connectivity to business hubs and leisure destinations via the nearby boulevard and major highways, making every journey effortless.





## REDEFINING LIFESTYLES

At GFS, we craft more than homes—we create timeless experiences. Our vision transcends walls and structures, delivering spaces where life flourishes and aspirations come to life.

With a foundation built on trust, quality, and a relentless pursuit of excellence, we have spent over a decade transforming communities into landmarks of luxury, comfort, and sustainability.

Coventry 66 is our latest masterpiece, a testament to our unwavering commitment to serene sophistication and unparalleled living. Here, every detail reflects the art of exceptional design, ensuring a lifestyle that is both inspiring and enduring.





COVENTRY



LUXURY AT THE CENTER OF TOMORROW





## WELCOME TO COVENTRY 66

Located in Dubai South, Coventry 66 offers a perfect blend of luxury and innovation. With stunning views, world-class amenities, and proximity to Expo City and Al Maktoum Airport, it places you at the heart of Dubai's future. Experience modern living in a community designed for tomorrow.















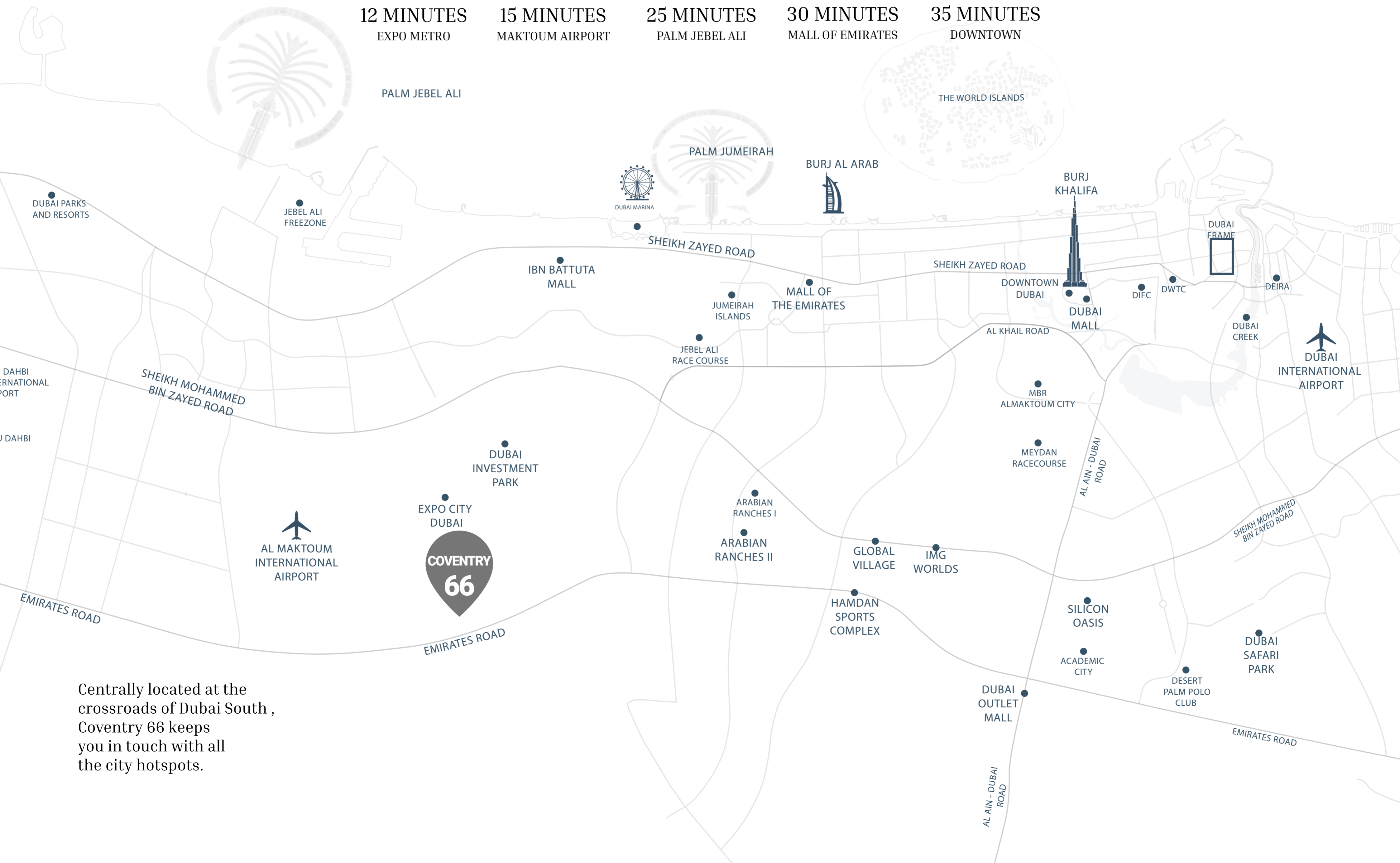








# PERFECTLY LOCATED



Centrally located at the crossroads of Dubai South, Coventry 66 keeps you in touch with all the city hotspots.



# ENDLESS VIEWS, ENDLESS MOMENTS

Coventry 66 offers stunning panoramic views of the surrounding community and tranquil landscapes. From its rooftop, every moment becomes a cherished memory, blending beauty, comfort, and serenity.







# STUDIO APARTMENTS

Designed for simplicity and elegance, where every inch is optimized for contemporary living and aesthetic appeal.











# ONE BEDROOM APARTMENTS

Our one-bedroom apartments seamlessly blend aesthetic design with practical living. Featuring refined interiors, a spacious layout, and modern finishes, it provides a stylish and comfortable retreat for an elevated lifestyle.







BRUNNEN  
WATER DISPENSER

Range hood with integrated lighting

Utensil holder

Green apples

Wine glasses and tray

Oranges

OERUM  
Dreams of New York  
BRINGING THE HOUSE HOME  
Dreams of New York  
The Interior Design Handbook









## TWO BEDROOM APARTMENTS

Experience modern living in our spacious two-bedroom apartments, designed for comfort and style. With sleek interiors, natural light, and thoughtful layouts, every corner feels like home.







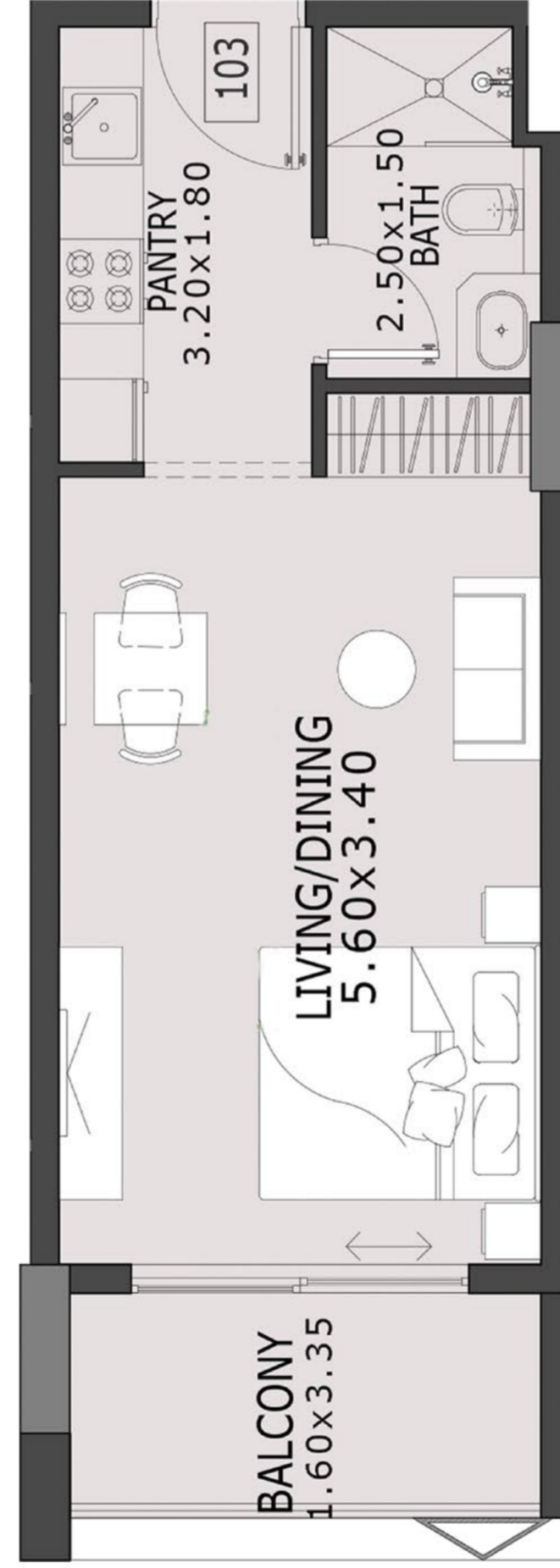




DISCLAIMER : All dimensions, materials, and drawings are approximate and subject to change without notice. Actual areas may vary, and all images are for illustrative purposes only. The developer reserves the right to make revisions at its absolute discretion.

# STUDIO

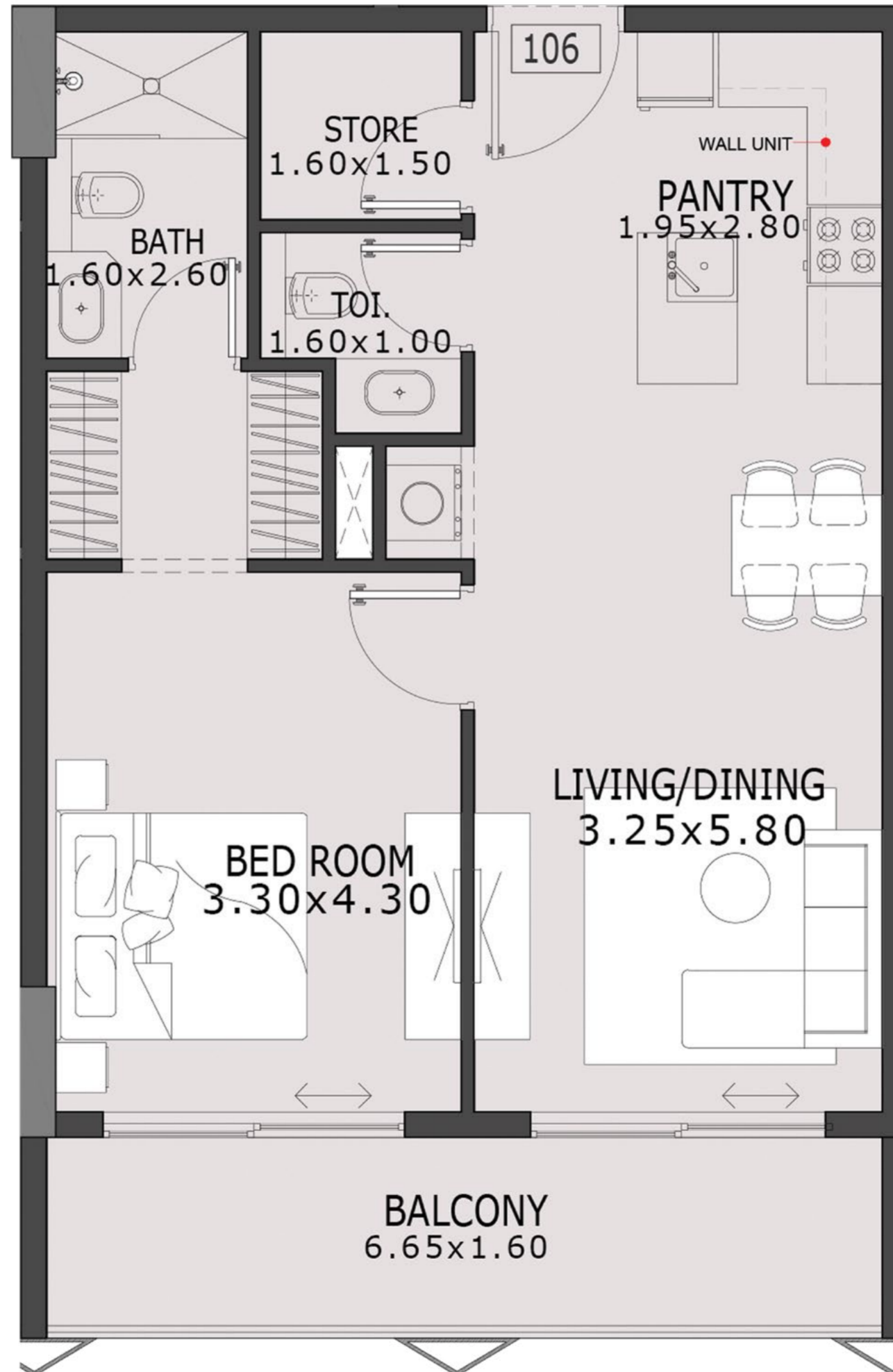
SUITE AREA :	349 Sq.ft
BALCONY AREA :	63 Sq.ft
TOTAL AREA :	412 Sq.ft





# 1 BEDROOM

SUITE AREA :	645 Sq.ft
BALCONY AREA :	120 Sq.ft
TOTAL AREA :	765 Sq.ft

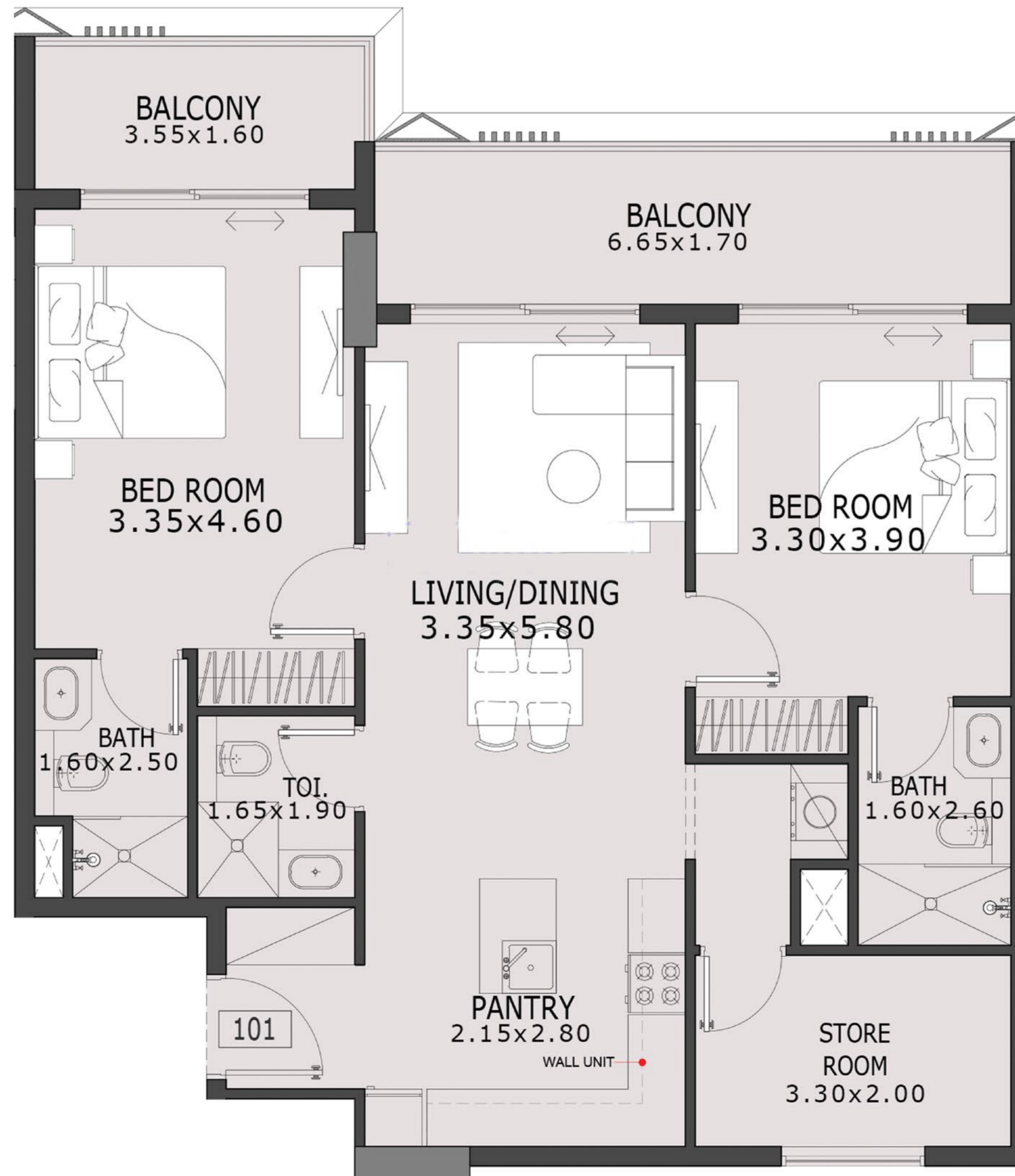


DISCLAIMER : All dimensions, materials, and drawings are approximate and subject to change without notice. Actual areas may vary, and all images are for illustrative purposes only. The developer reserves the right to make revisions at its absolute discretion.



# 2 BEDROOM

SUITE AREA :	954 Sq.ft
BALCONY AREA :	190 Sq.ft
TOTAL AREA :	1144 Sq.ft



DISCLAIMER : All dimensions, materials, and drawings are approximate and subject to change without notice. Actual areas may vary, and all images are for illustrative purposes only. The developer reserves the right to make revisions at its absolute discretion.



# ELEVATING EVERYDAY LIVING

Coventry 66 you choose between spending afternoons indoors or venturing outdoors to go on nature walks, family picnics or community activities.





# KIDS PARK

Designed with young explorers in mind, this play area offers a perfect mix of fun and creativity for children of all ages.





# INFINITY POOL

Refresh your senses in a pristine pool, designed for relaxation, tranquility, and moments of pure bliss.





# GYMNASIUM



A space that motivates and transforms, where your body is pushed to new limits, and every achievement feels within reach.









# COVENTRY



A PROJECT BY



[www.gfsdevelopments.ae](http://www.gfsdevelopments.ae)