



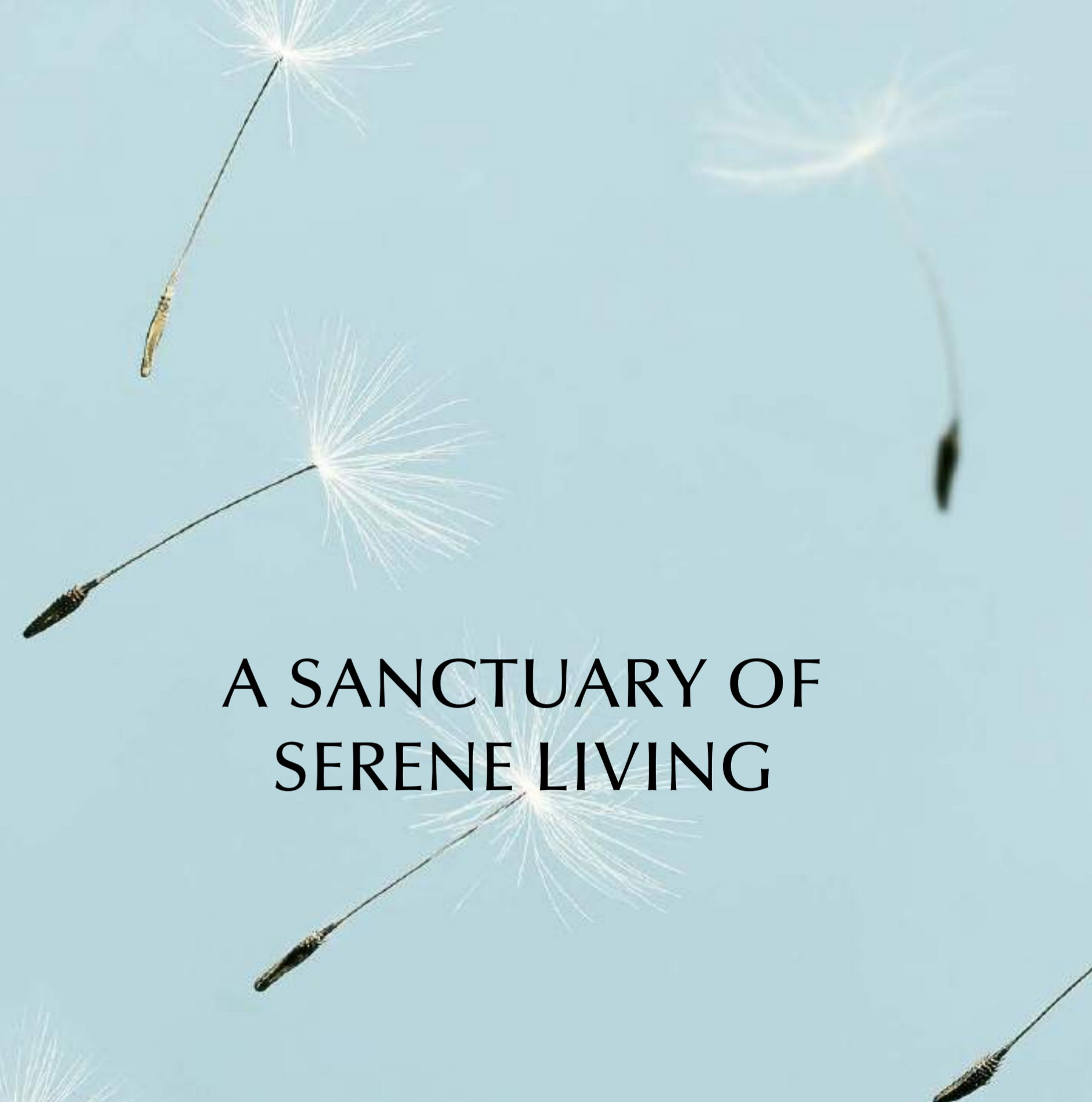
COVENTRY GARDENS

A PROJECT BY





A SANCTUARY OF
SERENE LIVING





A CITY BEYOND *Imagination*

Dubai is a city where dreams are crafted, molded by ambition and an unyielding drive for perfection.
A city where ancient heritage blends seamlessly with bold, modern innovation.





THE TRANQUIL
Invitation

Embrace a new horizon where peace and
elegance meet.



Dubai Land Residence Complex

A COMMUNITY BUILT FOR *Serenity*

The ideal location for those seeking a serene lifestyle, Dubai Land Residence Complex brings nature and modern living together, allowing you to enjoy life's peaceful moments without compromise.





FROM HUSTLE TO
Harmony

Away from the city's pulse yet perfectly within reach, Dubai Land Residence Complex is nestled in Dubai's evolving green landscape, a space that redefines relaxation and rejuvenation.



REDEFINING *Lifestyles*

At GFS, we craft more than homes—we create timeless experiences. Our vision transcends walls and structures, delivering spaces where life flourishes and aspirations come to life.

With a foundation built on trust, quality, and a relentless pursuit of excellence, we have spent over a decade transforming communities into landmarks of luxury, comfort, and sustainability.

Coventry Gardens is our latest masterpiece, a testament to our unwavering commitment to serene sophistication and unparalleled living. Here, every detail reflects the art of exceptional design, ensuring a lifestyle that is both inspiring and enduring.







COVENTRY
GARDENS











ARCHITECT OF *Elegance*

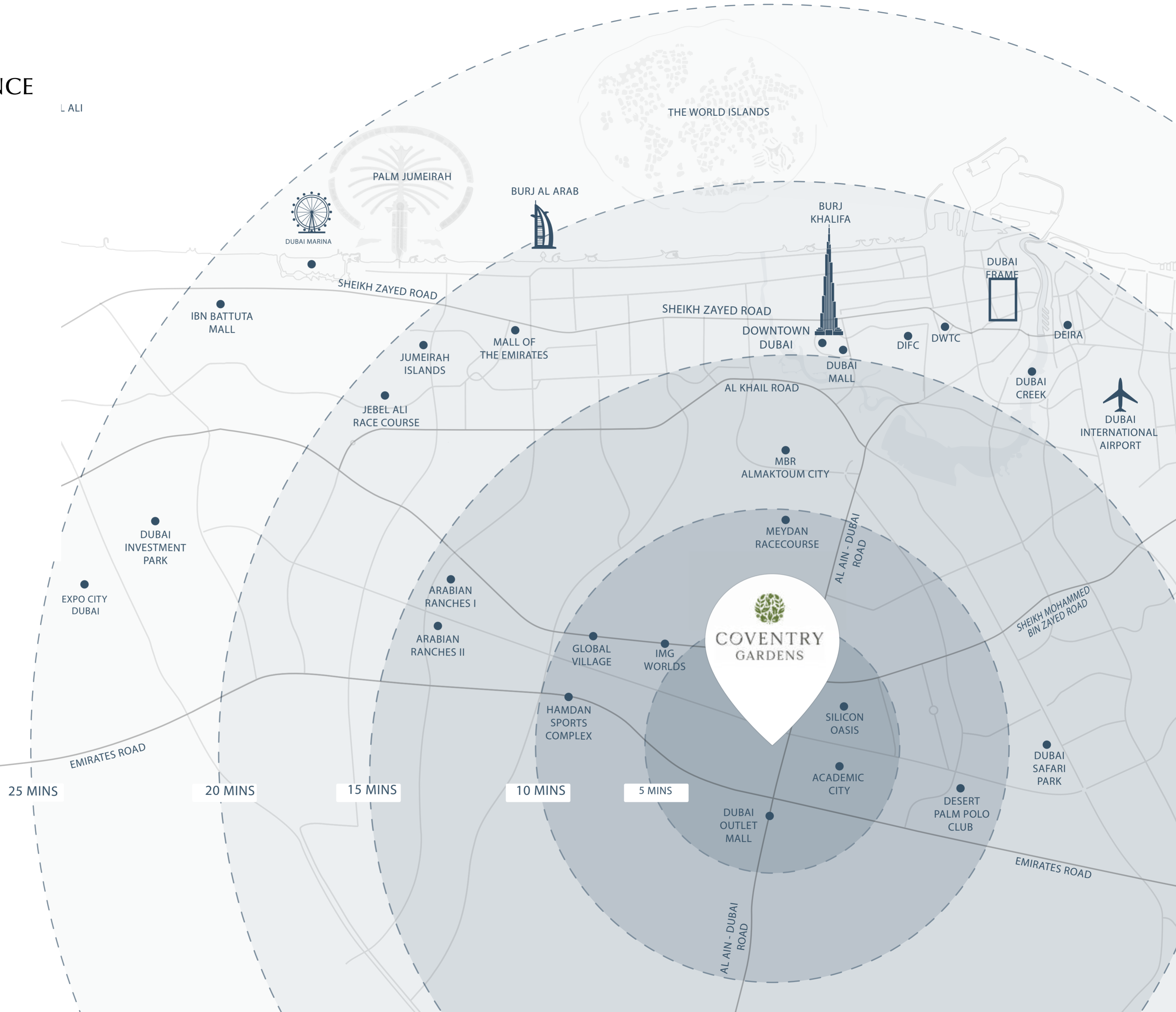
Coventry Gardens is an ode to elegance. Every line, curve, and impression is thoughtfully curated to create a space that brings out the best in you. Integrating nature's soft touch with luxurious concrete finishes is a work of art that you will call home. Here, architectural beauty meets harmonious design, where spacious interiors are framed by breathtaking green vistas. It's a place where tranquility and modernity coexist, offering you an unparalleled living experience that feels both elevated and effortless.

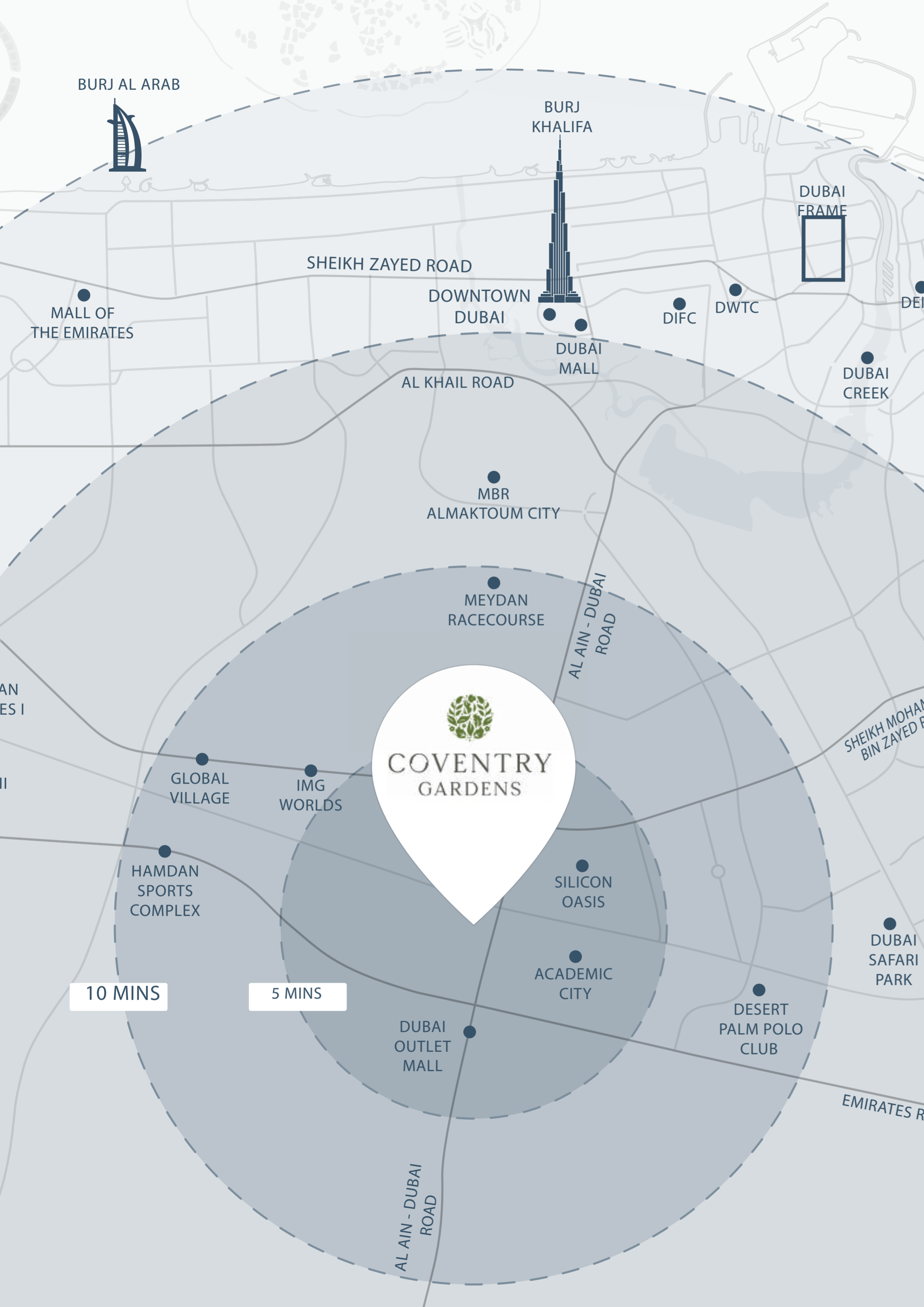
EASY ACCESS, GREAT CONVENIENCE

Centrally located at the crossroads of Dubai Land Residence Complex, Coventry Gardens keeps you in touch with all the city hotspots.

- 10 – 15 Min**
 Global Village
 Dubai Outlet Mall
 Mirdif City Center
 Dubai International Academic City

- 15 – 20 Min**
 Downtown & Burj Khalifa
 Dubai International Airport
 Miracle Garden
 Dubai Hills Mall





CONNECTED YET *Scheduled*

Nestled in the tranquil DubaiLand Residence Complex, Coventry Gardens offers the perfect balance, a peaceful retreat that remains effortlessly connected to Dubai's iconic landmarks.

A man and a woman are sitting on a light-colored sofa in a bright, modern living room. The woman is on the left, wearing a light-colored sweater and pants, looking towards the man. The man is on the right, wearing a white t-shirt and light-colored pants, looking back at her. They are both smiling slightly. The room features large windows in the background, through which a clear blue sky is visible. There are several indoor plants, including a large green plant on the right and a smaller one on the left. In the foreground, there is a large, textured, light-colored object, possibly a piece of furniture or a decorative element, which is out of focus. The overall atmosphere is warm and inviting.

TAILORED FOR *Solitude*

At Coventry Gardens, every family member finds a space designed just for them. From meticulously crafted living areas to luxurious amenities, we offer a harmonious blend of togetherness and personal retreat. Whether gathering as a family or seeking moments of solitude, our homes cater to every need, creating an environment of both connection and serenity. Here, every corner is a reflection of elegance, comfort, and the timeless bond of family living.



THE GARDENS OF COVENTRY

Step into a world where nature thrives and serenity surrounds you. Coventry Gardens boasts multiple lush garden spaces, each designed to rejuvenate the soul. Whether it's a quiet stroll amidst greenery, a family picnic, or a moment of reflection, these gardens offer a sanctuary to unwind, connect, and breathe easy. Embrace a lifestyle where every day feels closer to nature.

LIVE THE SERENE
Moments

At Coventry Gardens, every glance from your balcony offers more than just a view—it's a cathartic experience. Overlooking the ravishing beauty of Silicon Oasis, soak in the tranquil landscapes and whispering breezes that envelop you in a peaceful retreat.





STUDIO APARTMENT

Designed for simplicity and elegance, where every inch is optimized for contemporary living and aesthetic appeal.







ONE BEDROOM APARTMENT

Our one-bedroom apartments seamlessly blend aesthetic design with practical living. Featuring refined interiors, a spacious layout, and modern finishes, it provides a stylish and comfortable retreat for an elevated lifestyle.









TWO BEDROOM APARTMENT

Experience modern living in our spacious two-bedroom apartments, designed for comfort and style. With sleek interiors, natural light, and thoughtful layouts, every corner feels like home.







CURATED
Wellness

Here, well-being isn't just an experience; it's a way of life. From peaceful retreats to energizing areas, each feature of our amenity is designed to create a harmonious environment where your lifestyle flows effortlessly, nurturing every moment of your day.



KIDS PLAY AREA

Designed with young explorers in mind, this play area offers a perfect mix of fun and creativity for children of all ages.



A woman with brown hair tied back, wearing a white dress and sunglasses, is sitting on a blue inflatable pool ring in a swimming pool. She is looking away from the camera towards the water. A glass of orange drink with a straw is on the ring next to her. The water is clear blue with ripples and reflections of light. The background shows more of the pool and some bright light reflections on the water surface.

SWIMMING POOL

Refresh your senses in a pristine pool, designed for relaxation, tranquility, and moments of pure bliss.



RESTAURANTS



Indulge in a diverse culinary journey, where a wide selection of exquisite dining options caters to every craving and occasion.





FITNESS CENTER

An invigorating space designed to challenge your limits, where every movement brings you a step closer to your peak potential.



GYM



A space that motivates and transforms, where your body is pushed to new limits, and every achievement feels within reach.





GREEN SURROUNDINGS

Among the green expanses, you discover the true freedom of movement, where each step brings you closer to a life of energy and ease.

STUDIO

434.75 SQ FT



SUITE AREA	381.04 SQ FT
BALCONY AREA	53.71 SQ.FT
TOTAL AREA	434.75 SQ FT

DISCLAIMER : All dimensions, materials, and drawings are approximate and subject to change without notice. Actual areas may vary, and all images are for illustrative purposes only. The developer reserves the right to make revisions at its absolute discretion.

1 BEDROOM

694.7 SQ FT

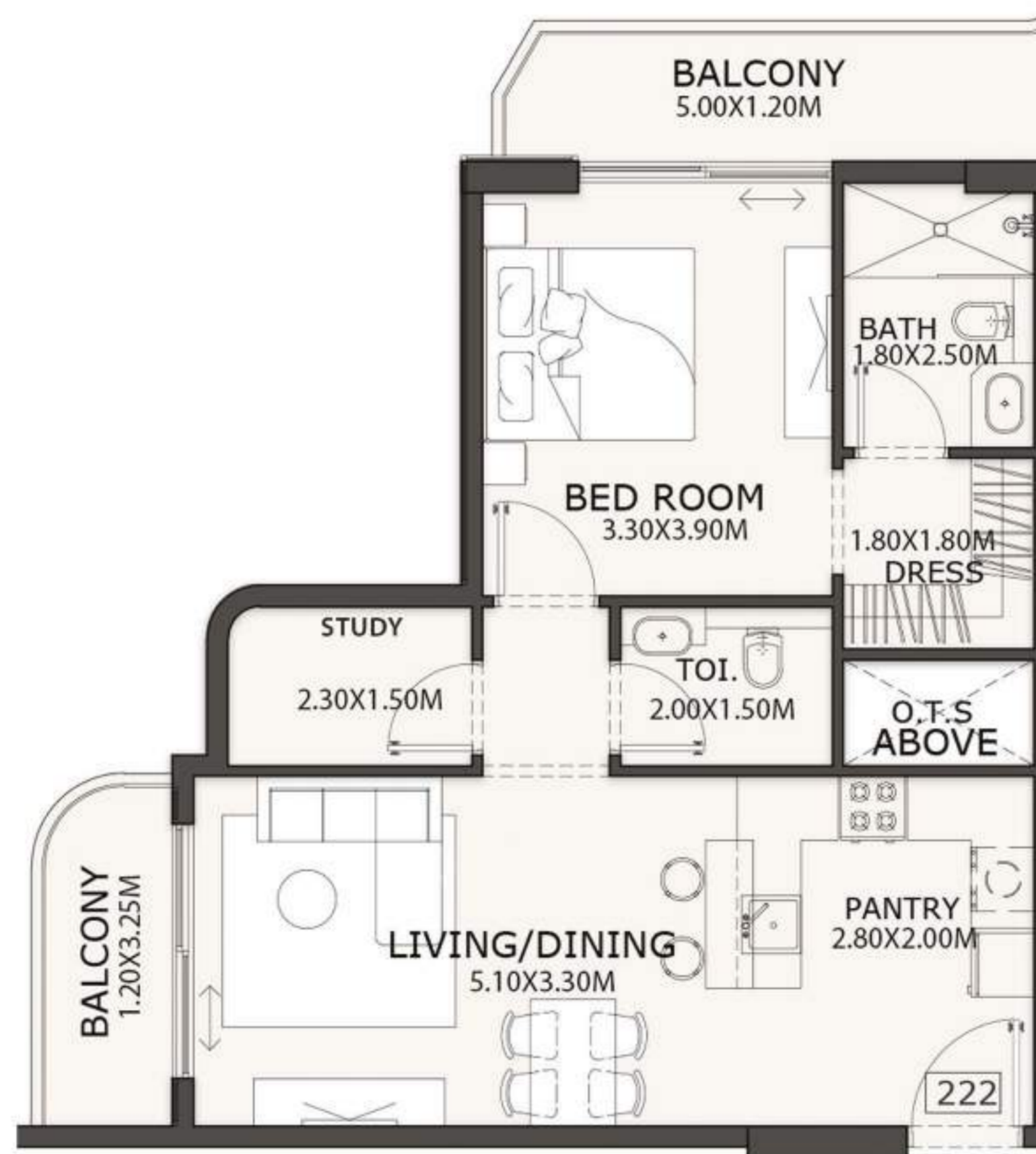


SUITE AREA	601.27 SQ. FT
BALCONY AREA	93.43 SQ. FT
TOTAL AREA	694.7 SQ. FT

DISCLAIMER : All dimensions, materials, and drawings are approximate and subject to change without notice. Actual areas may vary, and all images are for illustrative purposes only. The developer reserves the right to make revisions at its absolute discretion.

1 BEDROOM + STUDY

719.57 SQ FT

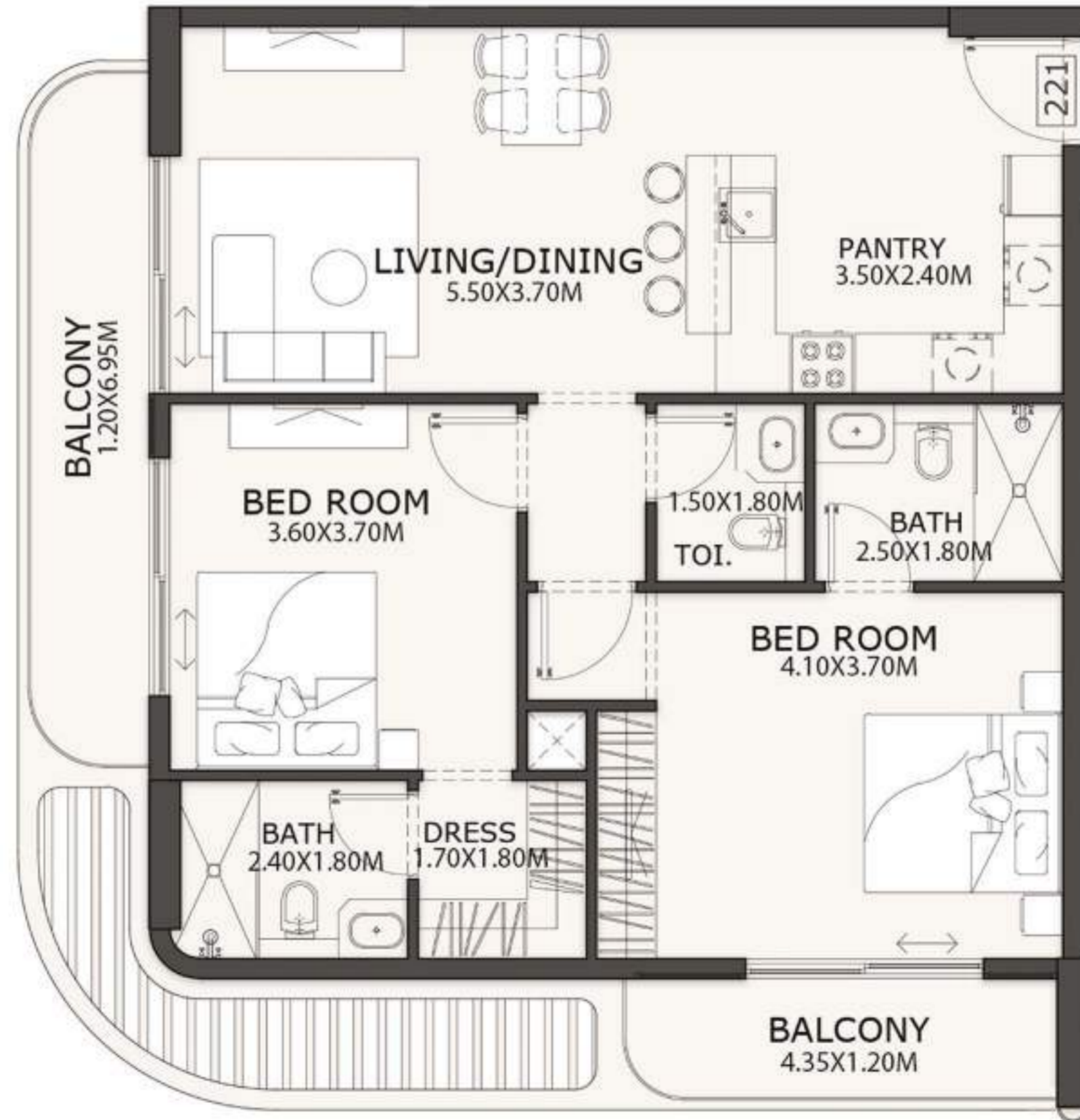


SUITE AREA	601.27 SQ. FT
BALCONY AREA	118.3 SQ. FT
TOTAL AREA	719.57 SQ. FT

DISCLAIMER : All dimensions, materials, and drawings are approximate and subject to change without notice. Actual areas may vary, and all images are for illustrative purposes only. The developer reserves the right to make revisions at its absolute discretion.

2 BEDROOM

1106.31 SQ FT



SUITE AREA	946.58 SQ. FT
BALCONY AREA	159.74 SQ. FT
TOTAL AREA	1106.31 SQ. FT

DISCLAIMER : All dimensions, materials, and drawings are approximate and subject to change without notice. Actual areas may vary, and all images are for illustrative purposes only. The developer reserves the right to make revisions at its absolute discretion.





COVENTRY GARDENS

A PROJECT BY



www.gfsdevelopments.ae