



THE LUXE DEVELOPERS

*CRAFTING NEW SKYLINES*

LM

LA MAZZONI

Things will never be  
the same again.

Step into a realm where every moment transcends the expected, and the extraordinary becomes your everyday. Where boundaries dissolve and each day ushers in a new chapter of discovery and delight. It's a lifestyle—a harmonious blend of luxury and nature.

At La Mazzoni life is elevated, with design that echoes the rhythms of the sea, the wind and spaces that invite serenity. This is where each day unfolds with new possibilities.

Welcome to a place that redefines your perspective on living, where utmost sophistication and undeniable luxury collide.





# Al Marjan Island - Ras Al Khaimah

Nestled along the tranquil shores of Al Marjan Island in Ras Al Khaimah, we are a dining destination to inspire and entice. This is where the Innimate's aspiration to be a leading business and leisure hub unfolds, blending cutting-edge innovation with the island's stunning natural landscapes.







## A World of Indulgences

Beyond your private haven, a realm of exclusive indulgence unfolds. Crafted for those who seek the extraordinary, every amenity is a testament to refined living. From tranquil retreats to vibrant social spaces, every detail at La Mazzoni is designed to elevate your lifestyle, offering a seamless blend of luxury, comfort, and sophistication.





## Arrive Beyond

The tranquility lounge feels like a private retreat, where plush seating and carefully curated interiors create an inviting, serene space.





## The Whispering Walk

The Whispering Walk forms a harmonious journey through La Mazzoni, where nature and architecture intervene. As you stroll along the gently lit path, the sound of cascading waterfalls and children's laughter fills the air.





## La Mazzoni's version of Powerhouse:

Feel activated in state-of-the-art fitness facilities, spanning over 11,000 square feet between the two towers, with cutting-edge equipment.





## Beyond Individuals

Designed to fuel productivity, creativity and connection, the La Mazzoni co-working spaces are designed to share stories laughter and experiences amongst green spaces.





## Infinity Indulgence

With cascading infinity pools La Mazzoni offers a space for both calm and invigoration. Submerge yourself in its crystal waters and let your gaze drift to the endless expanse of the Gulf.





Skydeck at La Mazzoni





## Kid's Pool and Play Area

For moments of quiet creativity, our indoor play area offers a haven of imagination, with colourful toys and engaging activities to spark young minds.







## Tranquility Temple

Escape to a peaceful retreat where tranquility reigns, offering an intimate space for relaxation, with treatments designed to soothe your body and mind. In this serene haven, expert hands guide you through a journey of pure rejuvenation. Every moment here is crafted to restore balance and leave you feeling renewed.



## Connoisseur's Corner

Indulge in the finer things in life while escaping from the frenzy of daily life. Find your own private moment within this sophisticated corner.



# 1-BEDROOM APARTMENTS





Experience the perfect balance of simplicity and sophistication in La Mazzoni's fully furnished 1 bedrooms. Every inch of space is thoughtfully designed to create an intimate yet functional atmosphere, where luxury furniture and regional influences blend perfectly.

The seamless kitchen design, with integrated appliances and a functional island with built-in seating, flows effortlessly into the living space, creating a sense of harmony. The bedroom is a serene retreat, offering tranquility and understated luxury in this elegantly crafted home.



## LEGEND

1. Kitchen /Dining
2. Living Room
3. Bedroom
4. Walk in Wardrobe
5. Toilet
6. Powder Room
7. Laundry
8. Balcony

AVE. SIZE: 850- 1150 SQ.FT

STARTING FROM: AED 2 MILLION



## 2-BEDROOM APARTMENTS







## 2-Bedroom

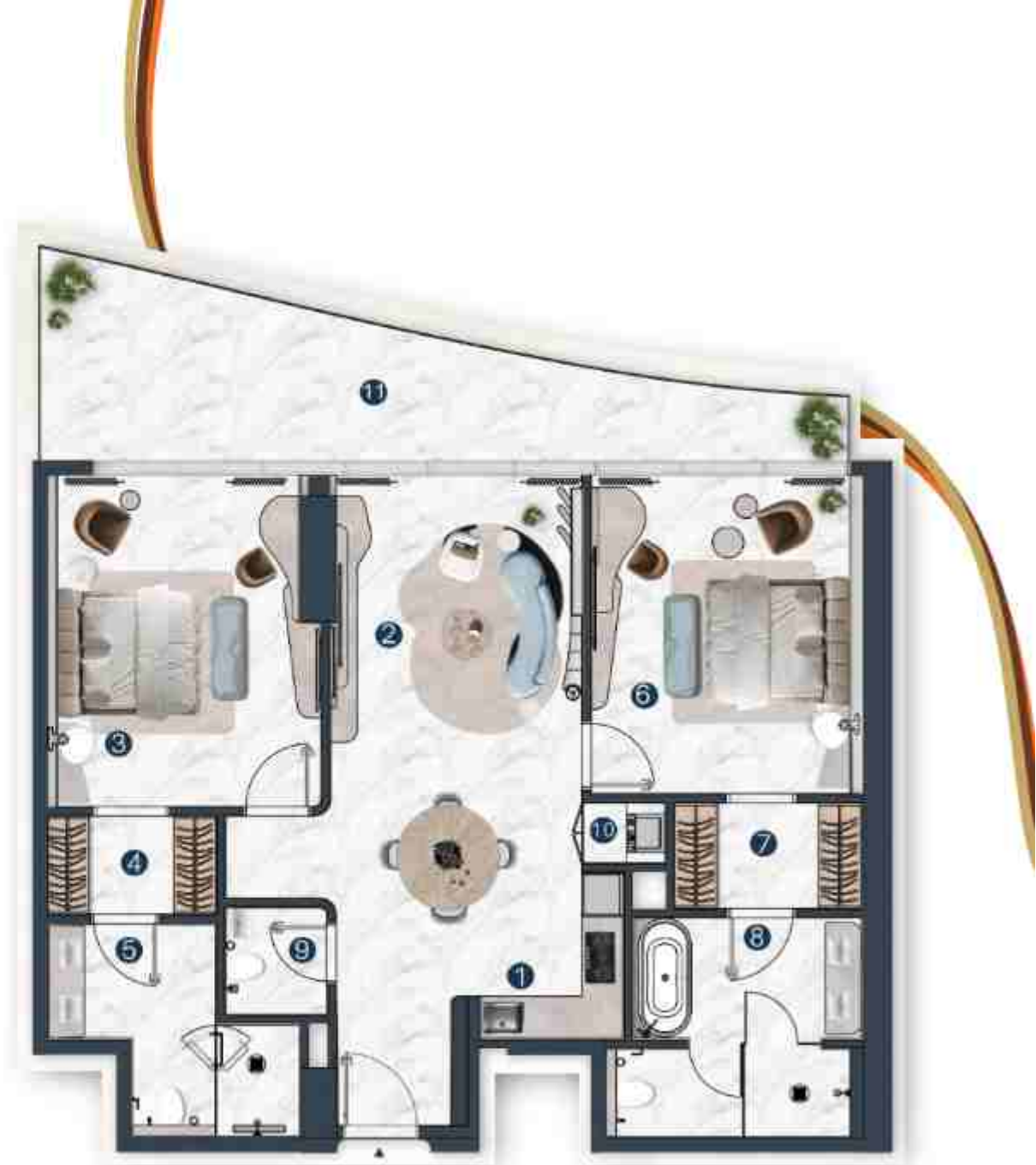
Experience the allure of redefined luxury at La Mazzoni, where our fully furnished 2-bedroom units combine spaciousness with style. Elegant finishes create a refined atmosphere, while wood adorned interiors create a sophisticated that exudes elegance. The exquisitely designed bed blends sophistication with ultimate comfort, and the luxurious bathroom offers a retreat with premium fixtures and serene design, making every moment feel like a tranquil escape.

## LEGEND

1. Kitchen /Dining
2. Living Room
3. Bedroom 1
4. Walk in Wardrobe 1
5. Toilet 1
6. Bedroom 2
7. Walk in Wardrobe 2
8. Toilet 2
9. Powder Room
10. Laundry
11. Balcony

AVE. SIZE: 1200 - 1600 SQ.FT

STARTING FROM: AED 3.2 MILLION





# 3-BEDROOM APARTMENTS





## 3-Bedroom

Redefining spacious living, our luxury furnished 3-bedroom units feature grandeur that seamlessly blend comfort and sophistication. Expansive spaces are enhanced by the finest materials, adding a subtle yet elevated touch. The gently curved sofas and tables, along with intricate rug patterns, reflect La Mazzoni's unique design influence, transforming every room into a masterpiece of understated elegance.



## LEGEND

1. Kitchen /Dining
2. Living Room
3. Bedroom 1
4. Walk in Wardrobe 1
5. Bedroom 2
6. Walk in Wardrobe 2
7. Toilet 2
8. Bedroom 3
9. Toilet 3
10. Walk in Wardrobe 3
11. Powder Room
12. Storage
13. Laundry
14. Balcony

AVE. SIZE: 1750 - 3000 SQ. FT

STARTING FROM: AED 5 MILLION



DUPLIX







## Duplex

For those who seek more, our fully furnished duplex units offer expansive living across two levels. Grand entertaining areas blend seamlessly with serene private retreats, balancing vibrant social spaces with tranquil havens. Carefully curated furniture adds a unique touch, while a gracefully curving staircase leads to the upper living areas, where luxury and comfort unite.

## LEGEND

1. Kitchen /Dining
2. Living Room
3. Bedroom 1
4. Walk in Wardrobe 1
5. Toilet 1
6. Powder Room
7. Balcony
8. Bedroom 2
9. Toilet 2
10. Walk in Wardrobe 2
11. Bedroom 3
12. Toilet 3
13. Walk in Wardrobe 3
14. Balcony



AVE. SIZE: 2000 - 3000 SQ. FT

STARTING FROM: PRICE ON REQUEST



PENTHOUSE





## Experience the Grandeur

For those who seek the epitome of luxury, our fully furnished penthouses are the ultimate expression of grandeur. Perched on the uppermost floors, these expansive residences offer sweeping, uninterrupted views, coupled with a lifestyle tailored to the most discerning tastes. Every corner speaks of exclusivity, with open living spaces that flow effortlessly into each other, creating an atmosphere where sophistication meets comfort. This is a home where elegance is not just seen, but felt, with every detail curated to perfection.





## LEGEND

- |                        |                        |
|------------------------|------------------------|
| 1. Living /Dining      | 13. Toilet 4           |
| 2. Kitchen             | 14. Walk in Wardrobe 4 |
| 3. Bedroom 1           | 15. Powder Room        |
| 4. Toilet 1            | 16. Office             |
| 5. Walk in Wardrobe 1  | 17. Maid Room          |
| 6. Bedroom 2           | 18. Maid Toilet        |
| 7. Toilet 2            | 19. Laundry            |
| 8. Walk in Wardrobe 2  | 20. Mechanical Room    |
| 9. Bedroom 3           | 21. Storage            |
| 10. Toilet 3           | 22. Balcony            |
| 11. Walk in Wardrobe 3 | 23. Plunge Pool        |
| 12. Bedroom 4          |                        |

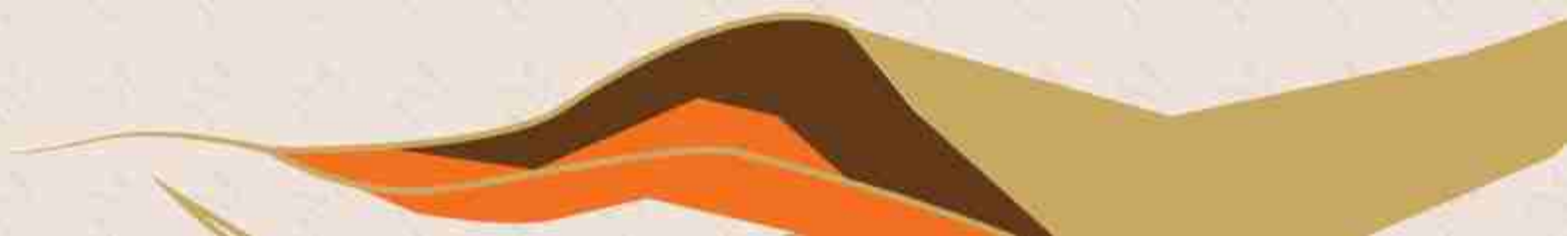
AVE. SIZE: 6000 - 7500 SQ.FT

STARTING FROM: PRICE ON REQUEST





# CHALETS





As Secluded as  
it is Grounded

For those who prefer villa-style living without losing touch with the tangible life, our fully furnished exclusive chalets offer expansive living amidst the vibrant energy of La Mazzoni.



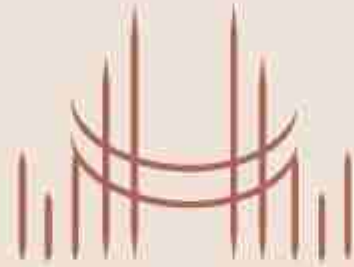
## LEGEND

- |                       |                     |
|-----------------------|---------------------|
| 1. Dining             | 9. Toilet 2         |
| 2. Living Room        | 10. Maid Room       |
| 3. Kitchen 1          | 11. Maid Toilet     |
| 4. Bedroom 1          | 12. Powder Room     |
| 5. Walk in Wardrobe 1 | 13. Laundry         |
| 6. Toilet 1           | 14. Terrace         |
| 7. Bedroom 2          | 15. Plunge Pool     |
| 8. Walk in Wardrobe 2 | 16. Outdoor Seating |

AVE. SIZE: 4000 - 5000 SQ. FT

STARTING FROM: PRICE ON REQUEST





THE LUXE DEVELOPERS

800 THE LUXE  
[www.theluxedevelopers.ae](http://www.theluxedevelopers.ae)