



# SKY SUITES

by Peace Homes Development



**PEACE HOMES  
GROUP**



# CONTENT

02.	Your Next Address
03.	Enchanting Lobby
06.	Studio Apartment
09.	One Bedroom Apartment
11.	Two Bedroom Duplex
14.	Rooftop Paradise
15.	Amenities
18.	Luxury Facilities
20.	Apartment Layouts
22.	Studio Apartment Layout
23.	One Bedroom Apartment Layouts
29.	Two Bedroom Duplex Layouts
36.	The Nearest Landmark
38.	Flexible Payment Plan



# YOUR NEXT ADDRESS

Sky Suites, an exquisite haven of sophistication nestled in the heart of Jumeirah Village Circle, developed by Peace Homes Group. We invite you to embark on a journey of extraordinary living.





# ENCHANTING LOBBY

8000 sqft lobby including valet parking





# FULLY SERVICED & FURNISHED HOTEL APARTMENTS

---





# RESTAURANT & BUSINESS LOUNGE

---





# STUDIO APARTMENT

with Private Pool and Outdoor Cinema





# CUSTOM-DESIGNED ITALIAN MARBLE-FINISHED BATHROOMS

---









# ONE BEDROOM APARTMENT

with Private Pool and Outdoor Cinema





# OPULENCE REDEFINED

---





# TWO BEDROOM DUPLEX APARTMENT

With A Private Pool, Jacuzzi, Outdoor Cinema, And Private Rooftop





# FULLY INTEGRATED SMART HOME AUTOMATION SYSTEM

---





## 2 BEDROOM DUPLEX ROOFTOP PARADISE

Indulge in exclusive luxury with private access to the rooftop's captivating private pool, Complemented by an enticing barbeque area and stylish seating.





# ELEGANCE DEFINED: CERAMICS BY VERSACE

---

The background of the advertisement is a close-up photograph of a dark, textured surface, likely a ceramic tile or a piece of furniture. A prominent feature is a diagonal band of a gold-colored Greek key (meander) pattern. In the upper left, a portion of a wooden object with a dark stain is visible. The overall lighting is dramatic, with strong highlights and deep shadows.

**VERSACE**  
CERAMICS



# AMENITIES

Sky Suites is Designed to offer a superior quality of life. With ample spaces to hangout and unwind, residents can enjoy a true sense of community.







Sauna/Steam  
Room



Kids play  
area



Kids pool



Jacuzzi



Aqua Gym



Outdoor Lounge  
Beds



Open Cinema



Mocktail Bar



Multiple Sports  
Area



Aerobic Studio



Gym



Business Lounge



Floating Sun Beds



Community  
Room



Library



24 Hours  
Security



Jogging  
Track



Shaded  
Pavilion



Dining  
Outlets



Mini Golf



Barbque  
Station







# LUXURY FACILITIES

Outdoor Lounge Beds, Panoramic Swimming Pool, Fully  
Equipped Gym Business Lounge Floating Sun Beds  
Indoor Jacuzzi



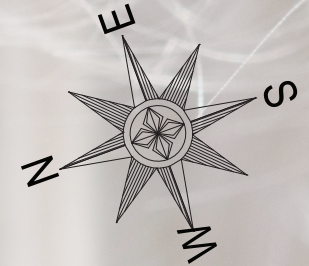
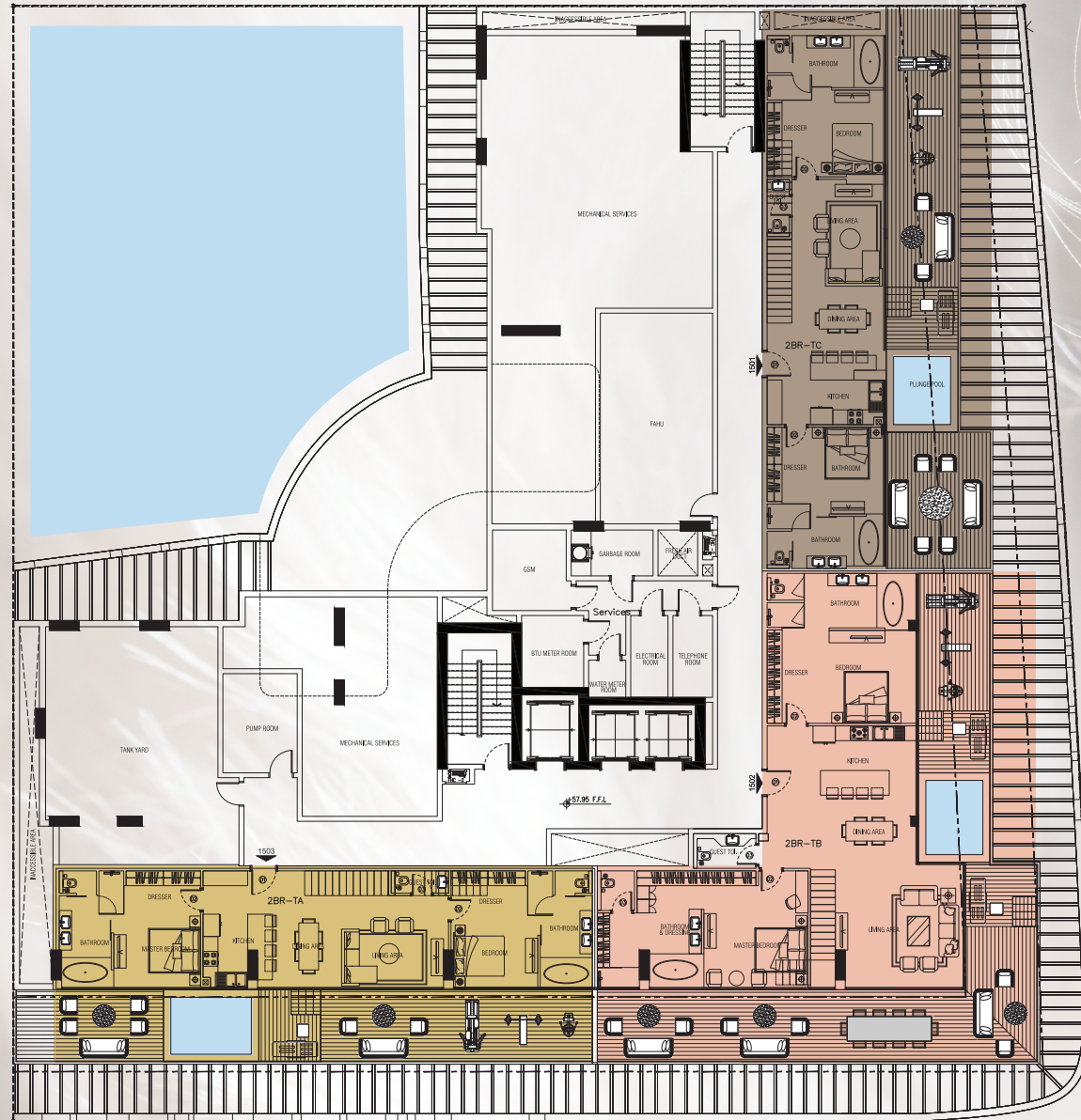




# APARTMENT LAYOUT

Explore Two Bedroom Duplex, featuring apartment details including area & dimensions.

- Two Bedroom Duplex Type A
- Two Bedroom Duplex Type B
- Two Bedroom Duplex Type C
- Pool





# APARTMENT LAYOUT

Explore the One Bedroom & Studio, featuring apartment details including area & dimensions.

- Studio
- One Bedroom Type A
- One Bedroom Type B
- One Bedroom Type C
- One Bedroom Type D
- One Bedroom Type E
- One Bedroom Type F
- Pool





Studio Pool View  
T01, T02, T03, T017, T018

Studio Community View  
T07, T08, T09, T010

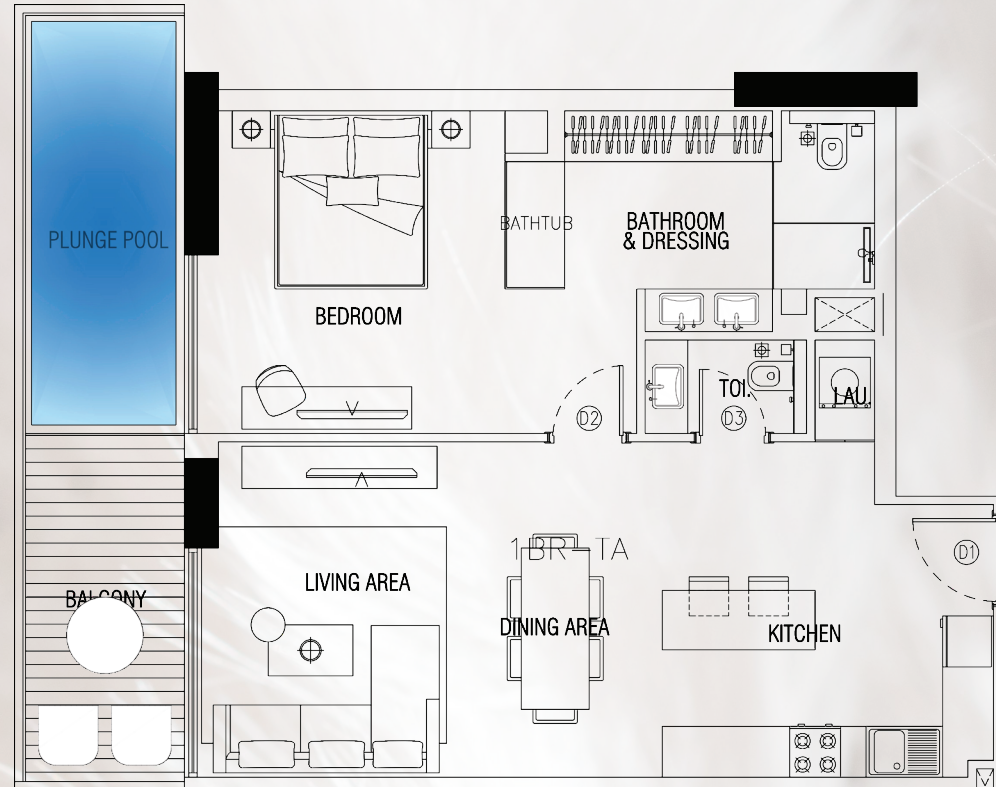
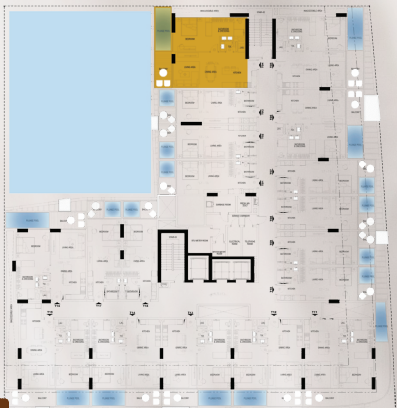


## STUDIO APARTMENT LAYOUT

Total Area: 43.67 SQM | 470.06 SQFT



1 BHK Type A  
Pool View T04

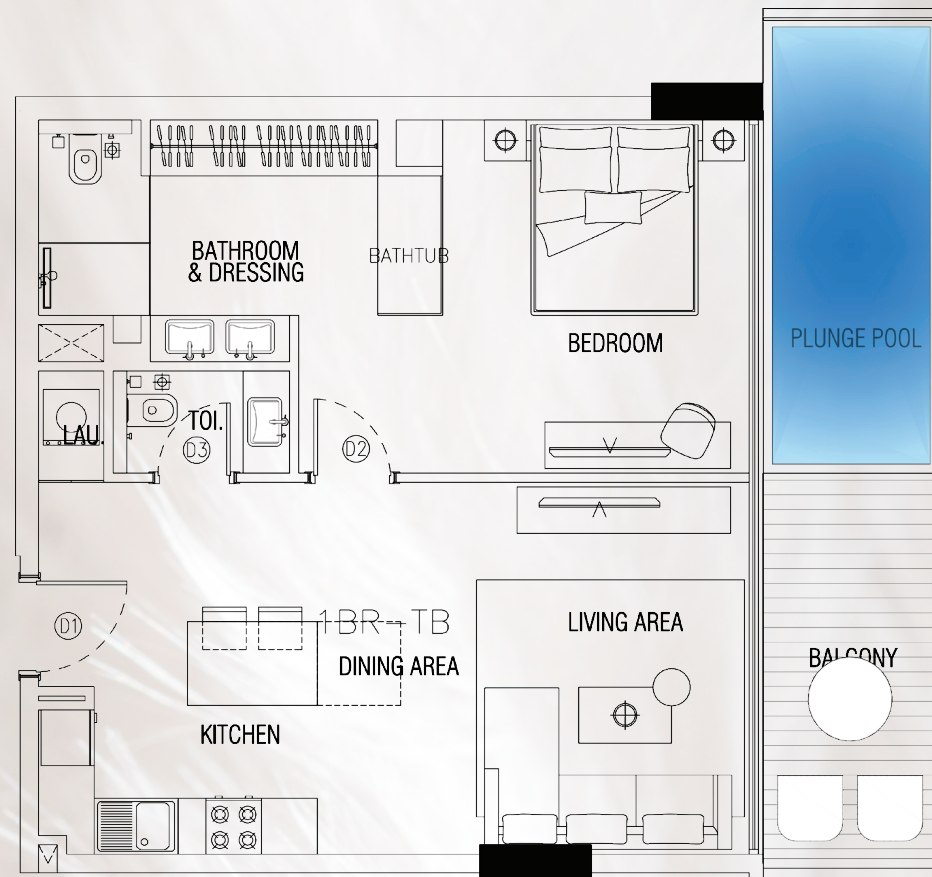


## ONE BEDROOM APARTMENT LAYOUT TYPE A

Total Area: 90.04 SQM | 969.18 SQFT



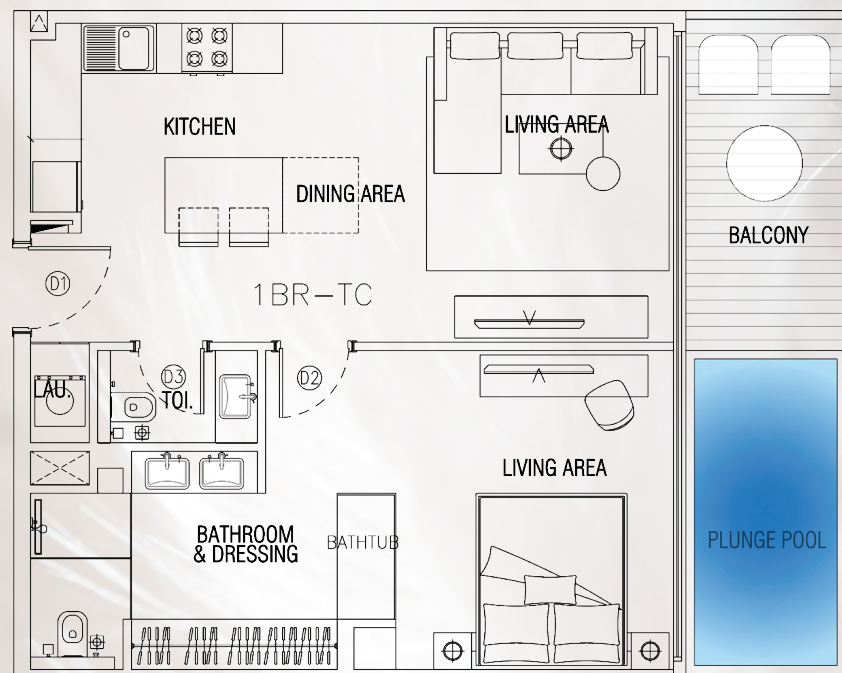
1 BHK Type B  
Community View T05



## ONE BEDROOM APARTMENT LAYOUT TYPE B

Total Area: 82.86 SQM | 891.90 SQFT





1 BHK Type C  
Community View T06, T12, T13, T014

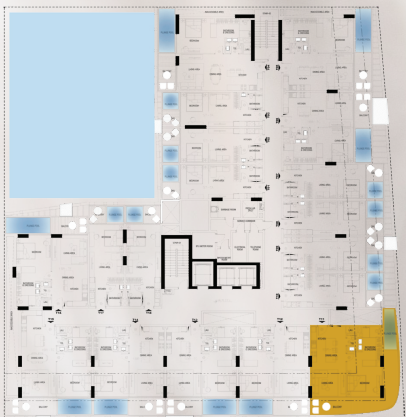


## ONE BEDROOM APARTMENT LAYOUT TYPE C

Total Area: 77.28 SQM | 831.83 SQFT



1 BHK Type D Corner Unit  
Community View T11



## ONE BEDROOM APARTMENT LAYOUT TYPE D

Total Area: 94.43 SQM | 1016.44 SQFT





## ONE BEDROOM APARTMENT LAYOUT TYPE E

Total Area: 85.78 SQM | 923.33 SQFT

1 BHK Type E  
Community View T15





1 BHK Type F  
Pool View T16



## ONE BEDROOM APARTMENT LAYOUT TYPE F

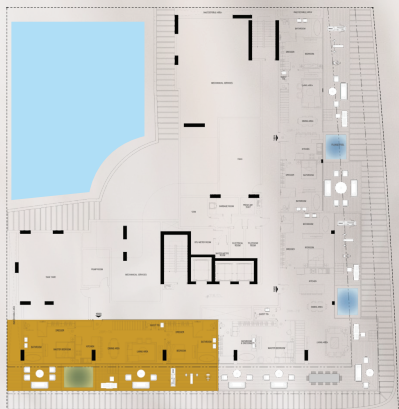
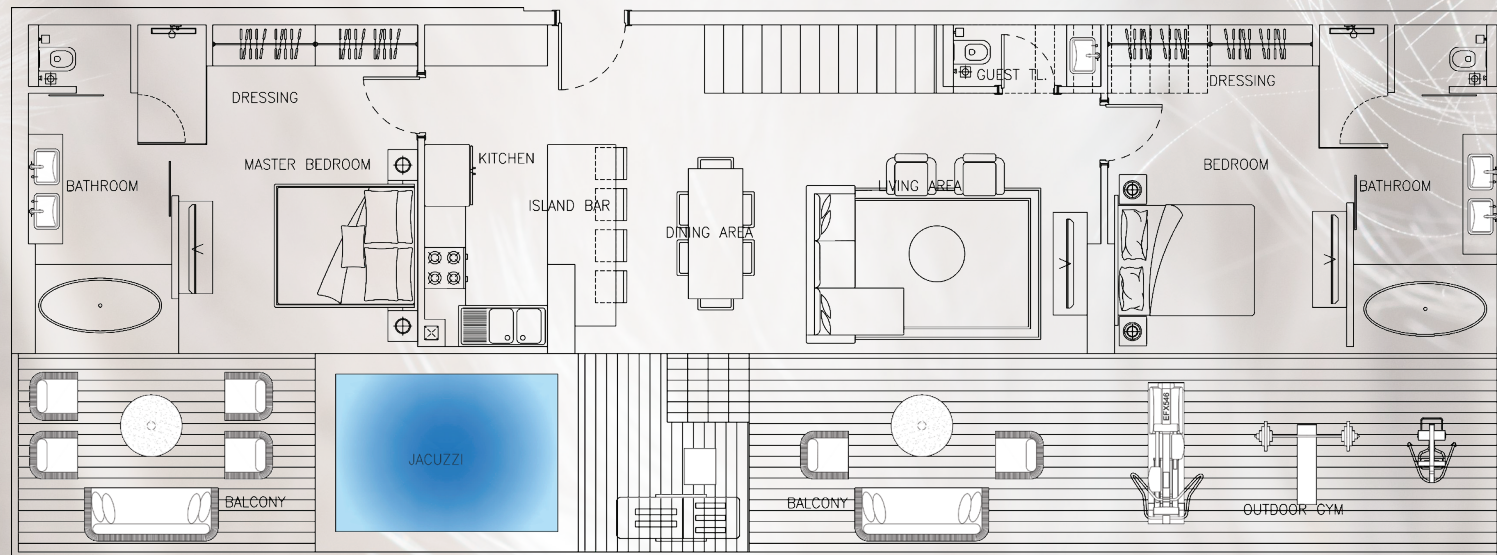
Total Area: 81.92 SQM | 881.78 SQFT





# **TWO BEDROOM DUPLEX ROOF TOP APARTMENT**

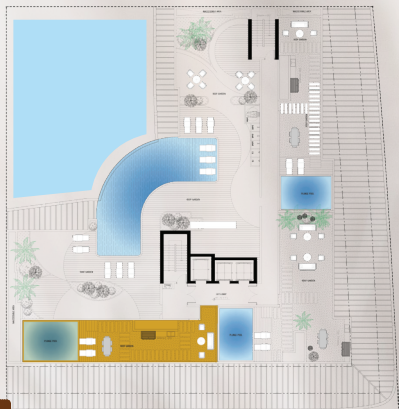
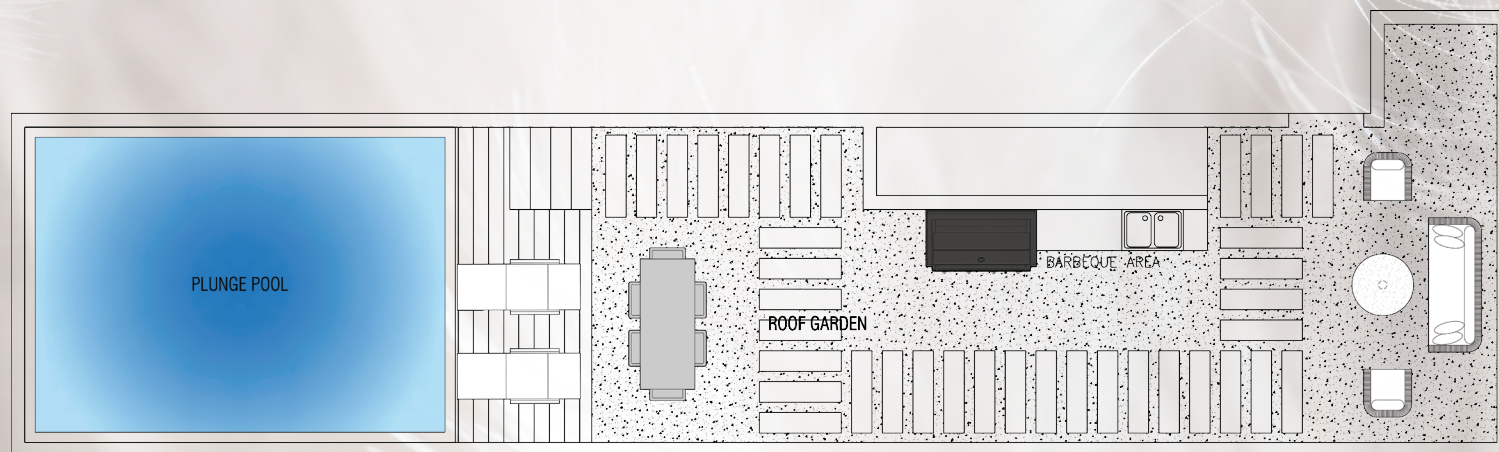




## TWO BEDROOM DUPLEX LAYOUT TYPE A

Total Area: 288.79 SQM | 3108.51 SQFT

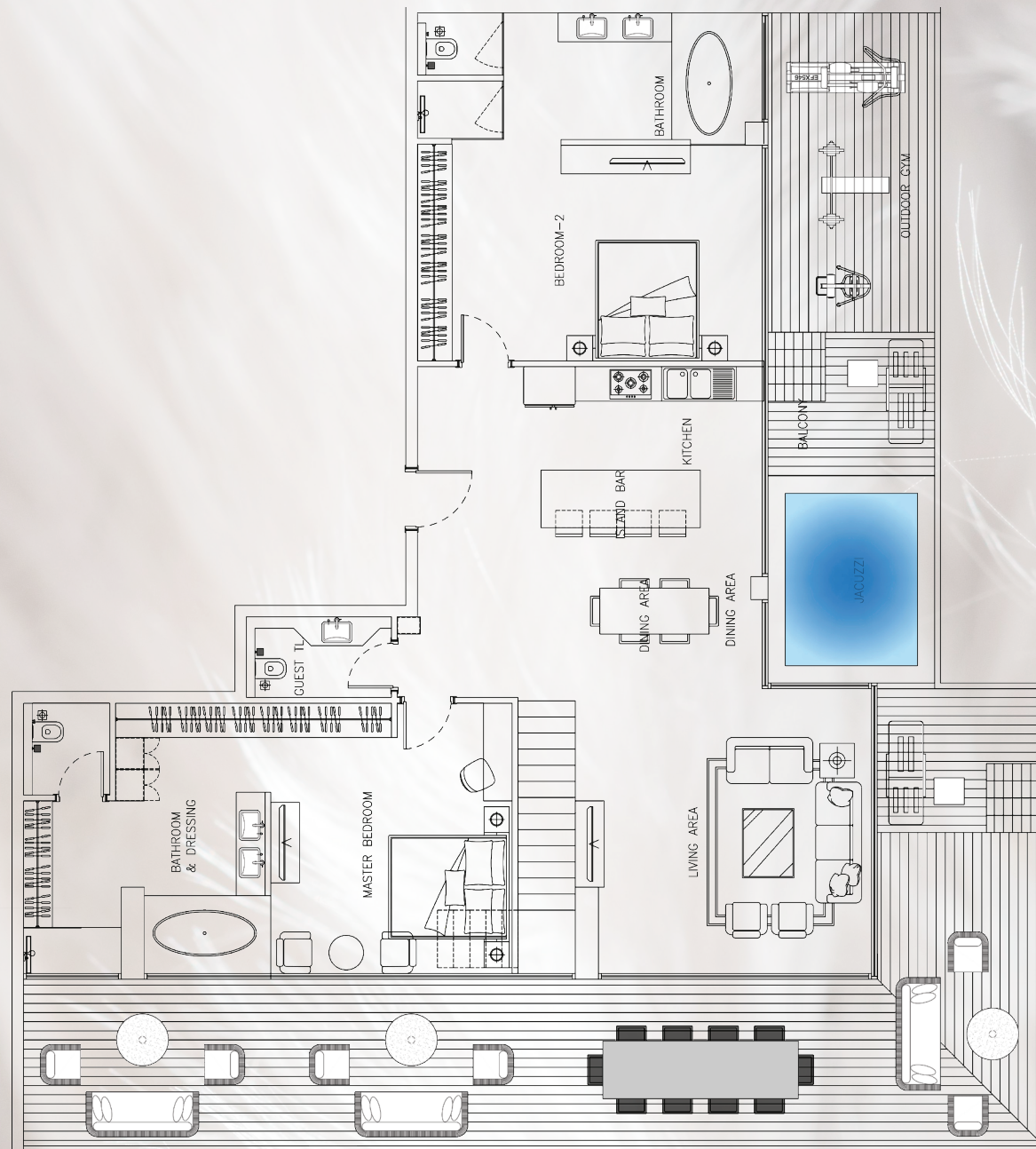




## TWO BEDROOM DUPLEX ROOF LAYOUT TYPE A

Total Area: 107.18 SQM | 1153.67 SQFT

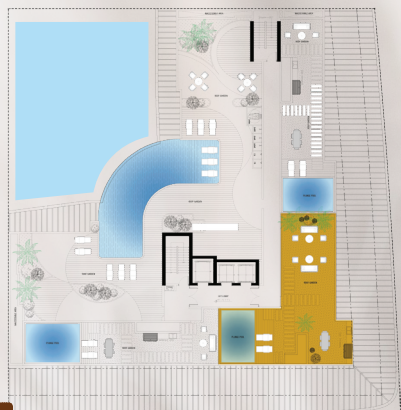




## TWO BEDROOM DUPLEX LAYOUT TYPE B

Total Area: 410.27 SQM | 4416.11 SQFT

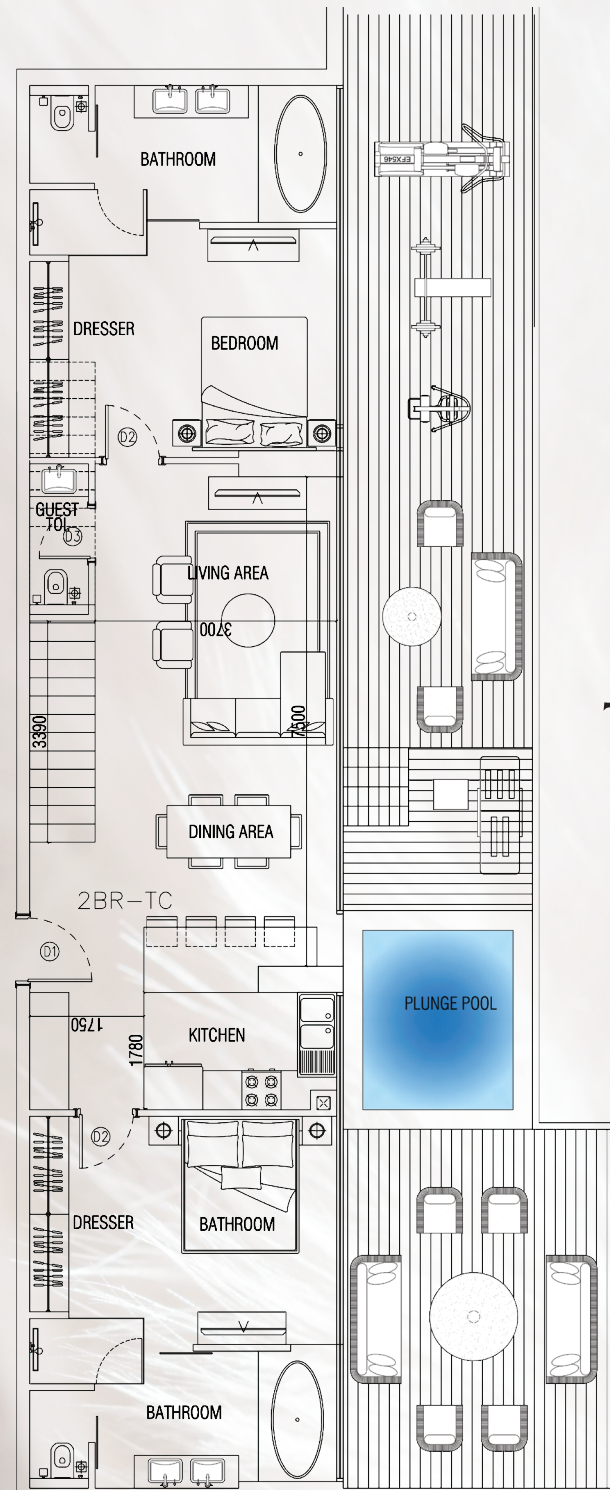




## TWO BEDROOM DUPLEX ROOF LAYOUT TYPE B

Total Area: 155.04 SQM | 1668.84 SQFT

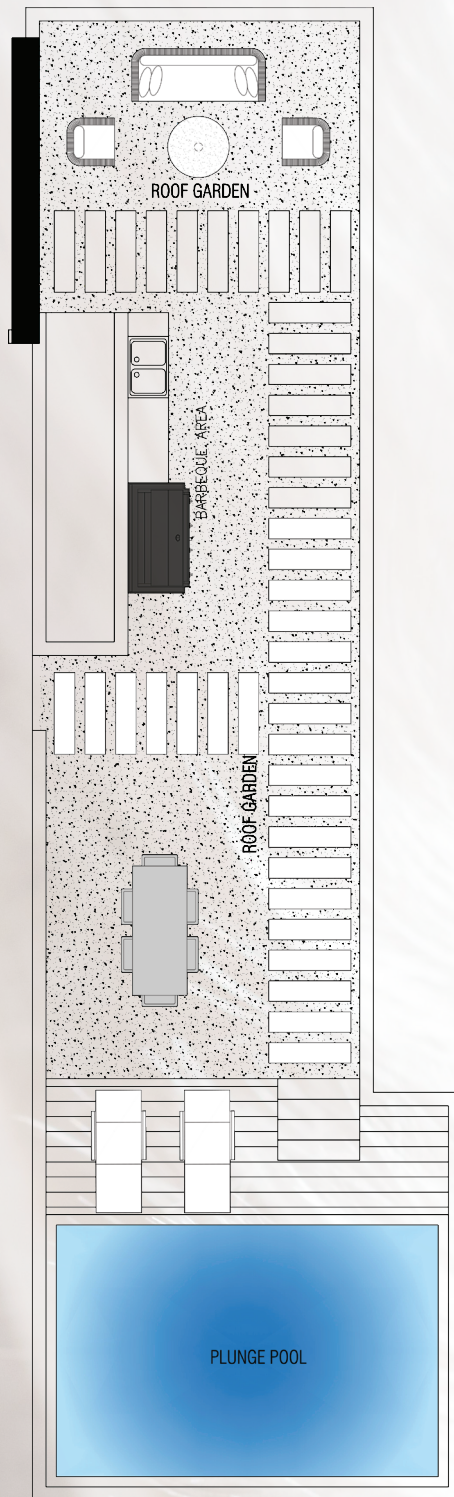
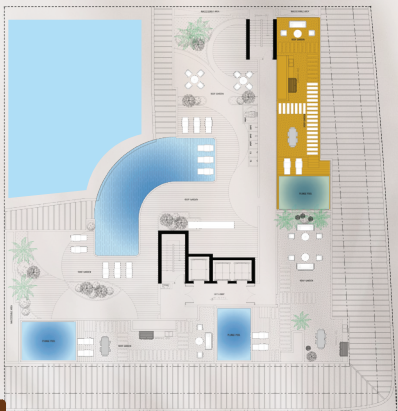




## TWO BEDROOM DUPLEX LAYOUT TYPE C

Total Area: 288.84 SQM | 3109.04 SQFT





## TWO BEDROOM DUPLEX ROOF LAYOUT TYPE C

Total Area: 111.94 SQM | 1204.91 SQFT



# THE NEAREST LANDMARKS

---

## Malls

Circle Mall	- 3 Mins
Dubai Hills Mall	- 7 Mins
City Centre Meaisem	- 14 Mins
Mall of Emirates	- 17 Mins
Marina Mall	- 20 Mins

## Schools

Sunmarke School (JVT)	- 7 Mins
Gems Founders	- 10 Mins
Gems Al Barsha (National School)	- 10 Mins
Brighten College Dubai	- 13 Mins
Bloom World Academy	- 13 Mins
Repton School Al Barsha	- 16 Mins

## Medical Facilities

Aster Clinic	- 5 Mins
Medcare Medical Centre	- 8 Mins
Saudi German Hospital	- 10 Mins
NMC Royal Hospital	- 14 Mins
Al Zahra Hospital	- 15 Mins
Neuro Spinal Hospital	- 15 Mins
Mediclinic Meadows	- 20 Mins

## Entertainment

Miracle Garden	- 10 Mins
Jumeirah Golf	- 10 Mins
The Els Club	- 12 Mins
Global Village	- 15 Mins
IMG World	- 15 Mins

## Beaches

The Walk	- 20 Mins
JBR	- 20 Mins
Sufouh Beach	- 20 Mins
Marina Beach	- 15 Mins
Sunset Beach	- 25 Mins

## Roads

Al Khail Road	- 9 Mins
Hessa Road	- 7 Mins
Mohammad Bin Zayed	- 6 Mins
Dubai Hills	- 15 Mins

## Community Parks

Sabat Park	- 2 Mins
Dokhon Park	- 5 Mins
Sabar Park	- 5 Mins
Slider Park	- 10 Mins
Miracle Garden	- 10 Mins

## Areas:

Arabian Ranches	- 5 Mins
Arjan	- 10 Mins
Marina	- 12 Mins
Palm Jumeirah	- 15 Mins
Downtown	- 20 Mins

## Airports

Dubai International Airport	- 25 Mins
Al Makhtoum International Airport	- 25 Mins





Dubai Marina

E44 AL Khail  
Highway

Burj Al Arab

Sky Suites

E311 Sheikh Mohammad  
Bin Zayed Road

Downtown Dubai



## FLEXIBLE PAYMENT PLAN

### STUDIO

**20%**

**DOWN PAYMENT**

**1%**

**MONTHLY**

**40%**

**UPON HANDOVER**

### ONE BEDROOM

**20%**

**DOWN PAYMENT**

**5 YEARS**

**PAYMENT PLAN WITH**

**1%**

**WITH POST HANDOVER**





**PEACE HOMES  
GROUP**



# SKY SUITES

by Peace Homes Development

T: 800 PEACE HOME ( 732 - 234 - 663 )  
M: +971 50 991 3866

Prime Business Center - 17th Floor B Block - Jumeirah Village Circle (JVC)  
Dubai - United Arab Emirates.

W: [www.peacehomes.ae](http://www.peacehomes.ae)  
E: [info@peacehomes.ae](mailto:info@peacehomes.ae)