

THE PAD

BY OMNIYAT

DOWNTOWN DUBAI

THE PAD

BY OMNIYAT

A ZEST FOR LIFE

BIG BOLD & BRIGHT



SHINE LIKE A STAR

THE PAD LIVES AND BREATHS WITH YOU.

The Pad brings South Beach to Dubai. Tilted at a 6.5° angle, enveloped in LED lighting, the chic and sophisticated Pad is the pinnacle of super-glamorous condo living, the most striking building on the Creek, presiding over the Burj Khalifa and the sea.

During the day the unique facade shines and shimmers, reflecting the ethereal blend of sea, sun and sky. At night, this spectacular exterior blazes from hot to cool, from vibrant disco to the dark mystery and allure of desert stars.

With 253 sumptuously designed and furnished residences, a sparkling pool and gym, luxuriant gardens, The Pad is the most coveted address in Dubai.





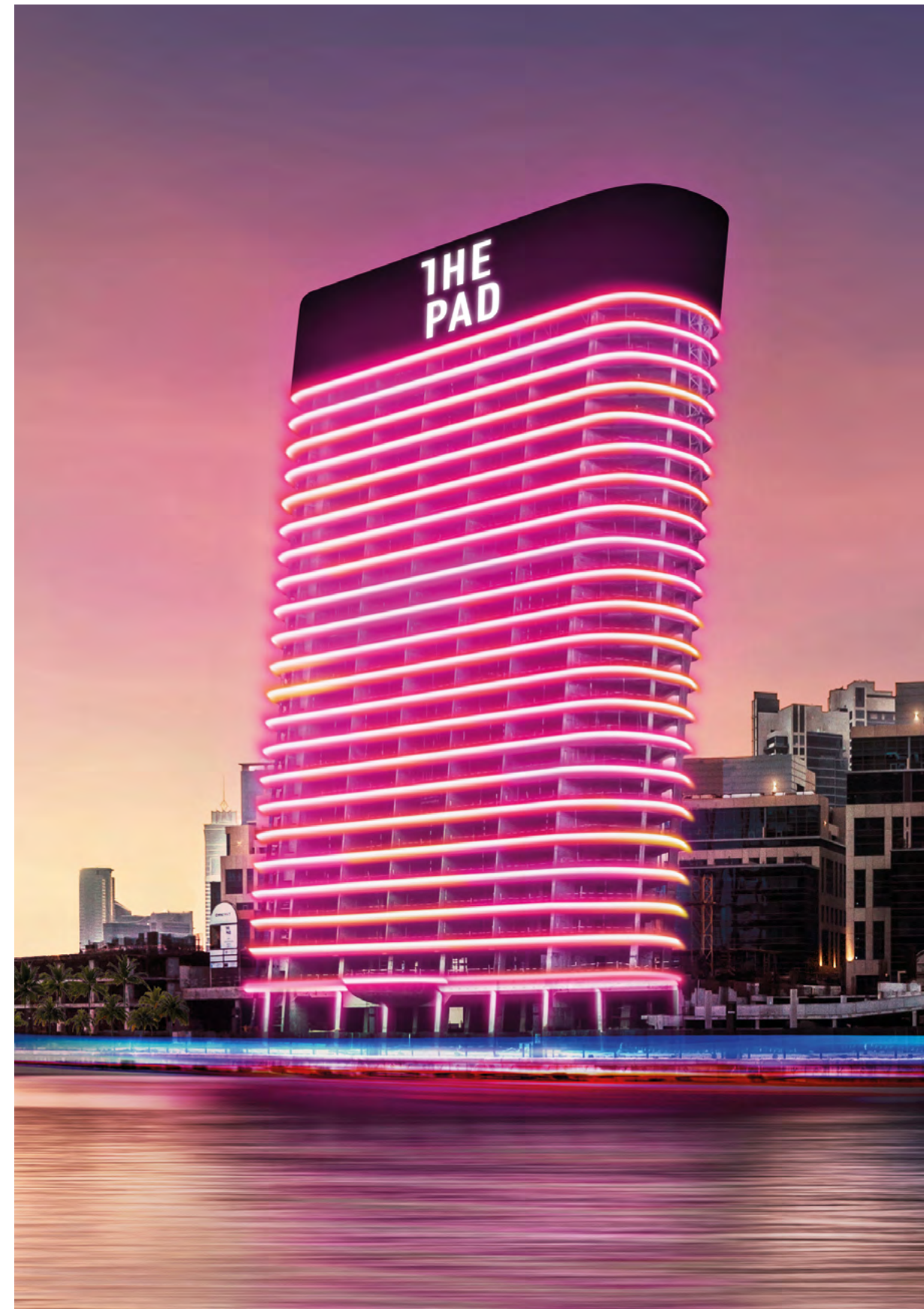
GLOW!
ETOWi

AT THE HEART OF EVERYTHING THAT MATTERS!

The Pad is perfectly positioned, in the heart of Marasi Business Bay, and directly opposite to Meydan One, the new groundbreaking master development.

Thus, The Pad has the utmost desirable investment location, as it is central to both an ever-expanding business hub and a growing residential district.

PERFECTLY POSITIONED



A nighttime photograph of the Jumeirah Emirates Towers Bridge in Dubai, featuring its iconic white arch and illuminated cables. The bridge spans a body of water, with the city skyline and the Burj Khalifa visible in the background under a dark sky with light trails.

LOCATION

**THE THRILL OF THE
WORLD'S BEST
RESTAURANTS,
INTRIGUING NEW CLUBS,
VIBING BARS - JUST
AROUND THE CORNER**

The Pad is surrounded by a myriad of restaurants that cater to diverse tastes and inspirations, vibing bars, and a wonderland of shops.

A short 15 minute drive is all it takes to get you from the airport to your glamorous Pad home.

The Pad has convenient access to the Sheikh Zayed Road and the Al Khail Road, and is only a few minutes from Dubai's International Financial Centre (DIFC) and its Trade Center.



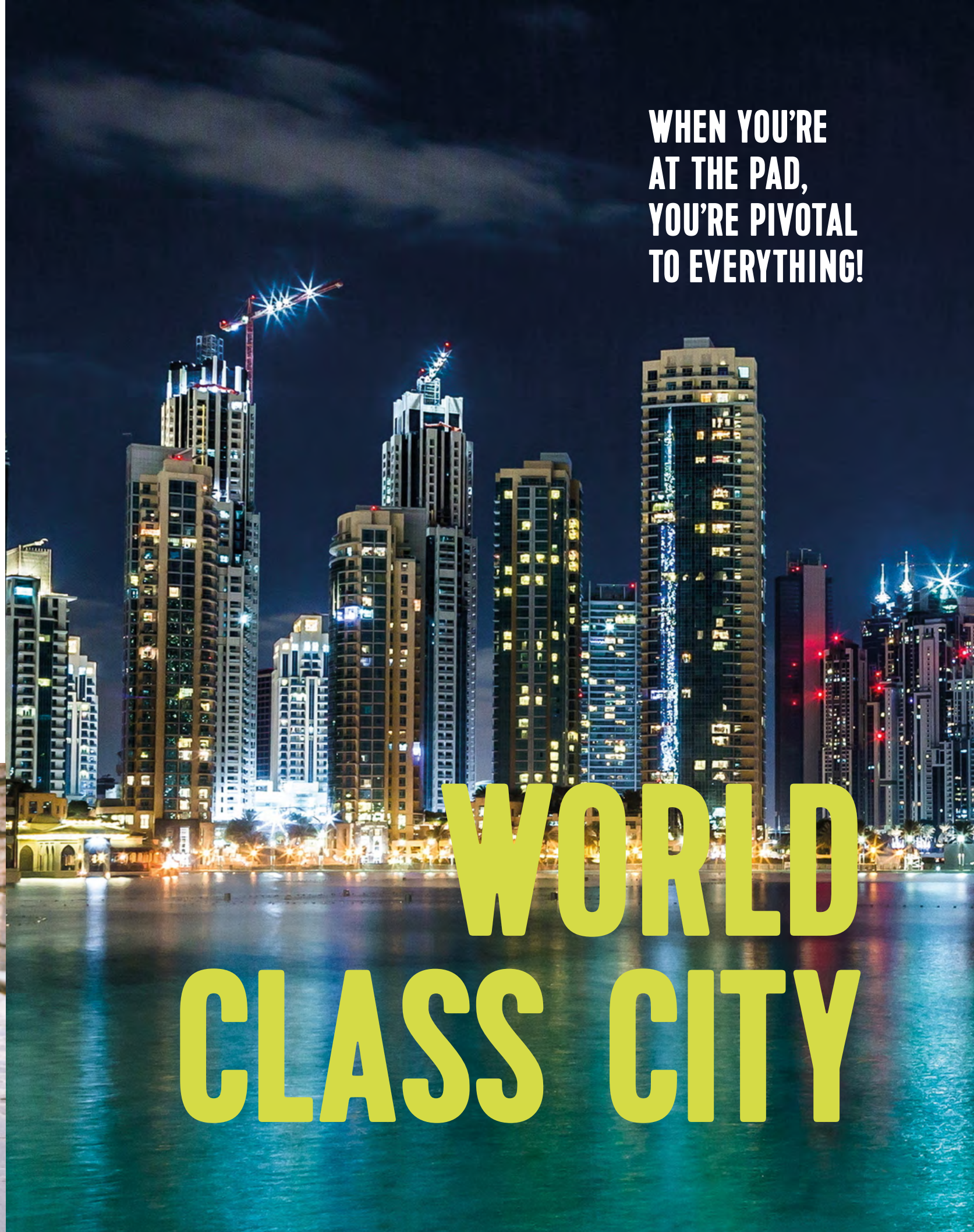
**FOR A DIP IN THE SEA,
THE STUNNING JUMEIRAH
BEACH IS JUST A HOP
AND A SKIP AWAY.**

For some serious shopping, Gucci, Prada, Dolce & Gabbana are all around the corner, at the biggest shopping centre in the world, the Dubai Mall.

And down the road you have the Souk al Bahar. Explore more than 1,500 eclectic shops and mingle with the Dubai crowd, or visit the fashionable Dubai Design District just across the road and discover a whole new world.



**WHEN YOU'RE
AT THE PAD,
YOU'RE PIVOTAL
TO EVERYTHING!**



**WORLD
CLASS CITY**

THE PAD

BY OMNIYAT





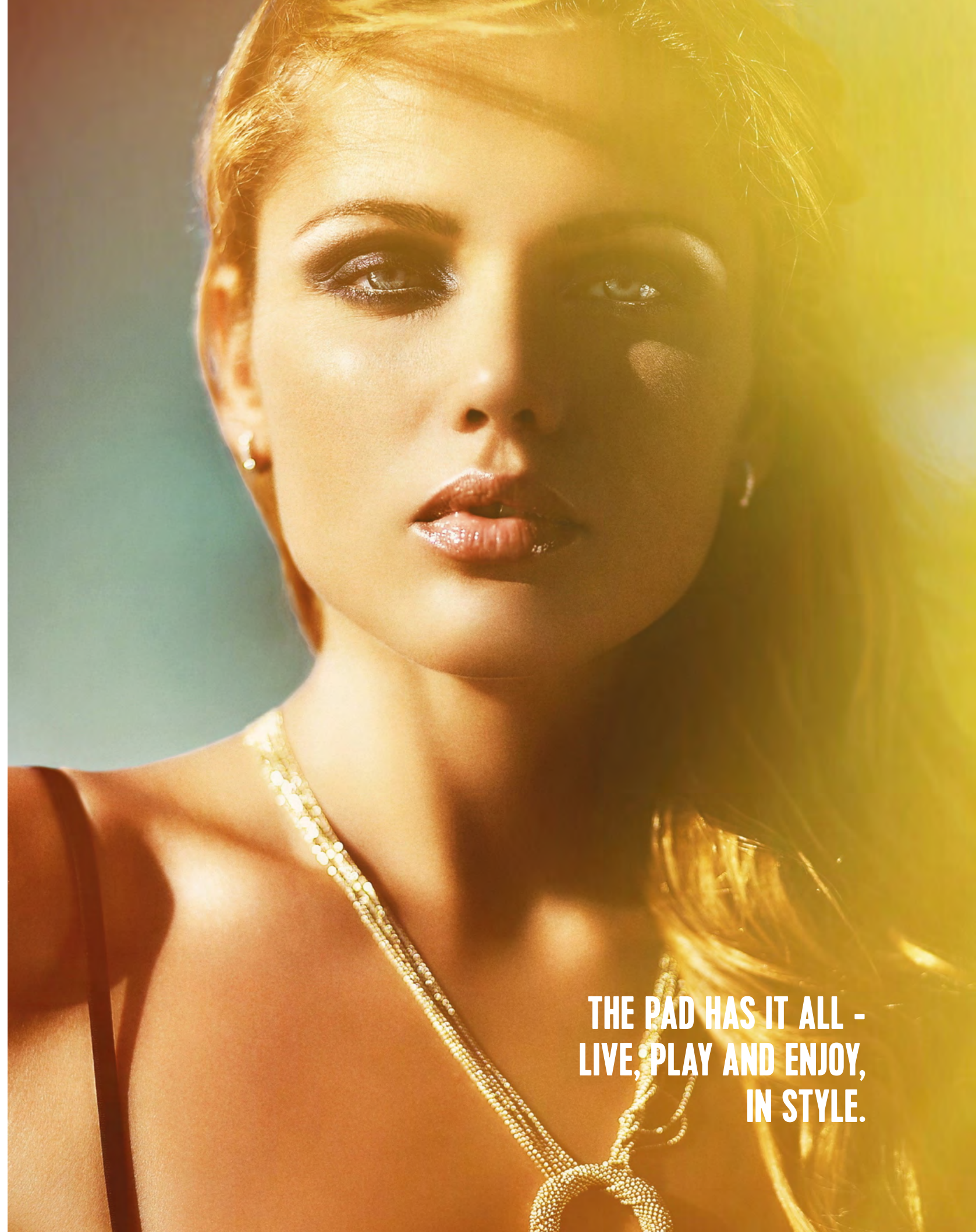
STRIKE A POSE

**THE PAD IS DESIGNED WITH SUMPTUOUS
AND STYLISH FURNISHED RESIDENCES.**

**Artful open spaces emphasize passion, modernity and an innovative
approach to condo living.**

From one to two bedroom suites and lofts, as well as special terraced villa
apartments, The Pad offers a range of units to satisfy all types and tastes of
its guests and residents.

**THE PAD HAS IT ALL -
LIVE, PLAY AND ENJOY,
IN STYLE.**



ENTER A DREAM WORLD

**THE PAD'S LOBBY
DEFINITELY HAS A
HUGE WOW FACTOR
- THE STUNNING,
EXPERIENTIAL, DYNAMIC
AND ARTFUL VIDEO-WALL.**

The Pad's lobby is not just a place you pass through, run into the elevator and zip up.

It's a place that welcomes you, embraces you. The video-wall captures and celebrates the beauty of Dubai's nature, creating the illusion of immersion - in turquoise waters, ebullient waves, frolicsome palm trees, desert sands and midnight blue skies.

It's an inspirational, engaging space, designed to correspond to the daily cycle.

It features relaxing imagery for the morning, more energetic scenery for noon and afternoon, a dynamic evening setting to get you pumped for the night ahead, and a "sweet dreams" backdrop to wish you a good night.



THE
PAD



UNIQUE PARADISE

**FEEL THE INCREDIBLE
ENERGY OF THE PAD'S
LIVING SPACES - TRENDY,
POSITIVE, COOL, VIBING.**

**Wake up and live your dream. Every
day. At The Pad.**

The stylishly furnished residences all come with glamorous furniture, sleek and smooth surfaces, inspirational artwork, the latest technology, an uber-smart home automation system, and a lot of clear, open space that allows you to feast your eyes on the sprawling views of the most stunning Dubai landmarks, such as the Burj Khalifa, the Dubai Creek, and Downtown Dubai.







HAPPY TO BE HOME

The Pad is all about unique details, latest trends, and stylish solutions.

The modern materials, unobtrusive yet state-of-the-art technology, hip furniture, hand-picked artwork and dynamic color-patterns create a super-comfortable environment and an energy flow to keep you happy, balanced and energized.





THE ULTRA CHIC ONE BEDROOM GEM.

The Pad's zesty one-bedroom apartment comes with a spacious living room, cushy bedroom, fully equipped kitchen, elegant bathroom with mood lighting, a control-it-all home automation system, all further enhanced and upgraded to the max with full floor-to-ceiling views of Dubai.

ONE OF A KIND



**COLOR
YOUR
WORLD**

STYLE PINNACLE

THE PAD'S ELEGANT TWO BEDROOM APARTMENT IS A BLEND OF BESPOKE DESIGN AND NUANCED ARCHITECTURAL EXPERTISE.

The two-bedroom Pad has an expansive living room, exquisitely tasteful and enjoyable, with immense floor-to-ceiling windows and a grand lounge setting...

The comfortable dining area and stylishly bedecked kitchen spell peaceful morning coffee, laughter and smiles over a scrumptious meal, or just a relaxing drink before bedtime - your quiet time to admire the view and contemplate life.

The king-size bedroom and bathroom, from top to bottom, are the kind everyone dreams of - the freedom of glass walls everywhere and a top-notch view of the entire city.







COME HOME TO THE BEST VIEWS OF DUBAI, A CONTINUOUS INSPIRATION.

Wake up and be happy each morning, when watching a magnificent sunrise, ascending slowly over the Creek, from your plush king-size bed.

Afternoon tea with a view? Yes please.

You can relish the sunset from the privacy of your couch, or view the exciting light display of the Burj Khalifa instead of watching TV.

And every night you can count your lucky stars, while gazing at Dubai's sparkling lights.

Ah, what an inspired life!







CONTROL YOUR WORLD

THE PAD LIVES AND BREATHS WITH YOU.

The Pad's uber smart home-automation system let's you control everything in your Pad and at The Pad.

You can set audio and video preferences, change lighting according to your mood, regulate blinds, find your perfect room temperature, receive information and updates about bills and services from the building management, and even validate guest parking - all with just a few touches and swipes. You don't even have to get off the couch, or leave your comfy bed.

The system is user-friendly, and also easy to upgrade, personalize and tailor to your level of automation, your personality, mood, your wishes.

The system has a central brain, and works through the apartment's main panel, conveniently located touch panels in every room, and a super reliable and easy-to-use phone app, which ensures you can control everything even when not at home. You can set up your Pad just the way you like it, even before coming home.



REPLENISH YOUR SENSES

You can have it all at The Pad!

We've got a number of sumptuous amenities in store for you - sparkling vista pool, vibrant gym, luxuriant gardens.

Lounge under the palm trees, hang out with friends and neighbors, chill, relax.

Take a few strokes in the pure aqua and revive your strength.

Get pumped for the night with an energizing work-out and some cool vibes.

Or take it easy and mellow out for some serious peace of mind.

RELAX





MAKE YOUR MARK

WORKING OUT WITH THE
LATEST IN FITNESS AND
PERSONAL TRAINING,
WHILE TAKING IN THE
SPECTACULAR VIEW!

The Pad's dynamic, fully-equipped
gym is a fantastic place to get your
heart pumping, muscles flexing,
and the happiness that comes from
perfecting body and soul.



THE PAD'S POOL, WITH CABANAS AND TANNING DECK, IS THE APEX WHERE LEISURE MEETS LUXURY.

Here you can splash and sparkle, work on your tan and your social skills.

Relaxing with body and soul with a view of the Downtown skyline, calm waters and seclusion from the hustle and bustle of the city below.

SPLASH & SPARKLE



SHOP

ENJOY THE THINGS YOU LOVE

The Pad has a mix of trendy shops and ritzy boutiques, luxury retailers, coveted international brands, and hot local designers.

You can pick out something fantastic for that special someone, treat yourself just for the fun of it, keep an eye out for that extraordinary gift you've always wanted, pop in for a look at the latest fashion, art and technology marvels, or discover local art and design trendsetters.



DELICACIES AT YOUR DOORSTEP



THE PAD HAS A SUPER INDULGENT RANGE OF DINING OPTIONS.

The hip little coffee shop, with the smiling barista, is the perfect place to satisfy your craving for the brightest morning espresso.

Need chocolate? Oh we've got you covered. The gourmet chocolate shop and bar looks like it came straight out of Chocolat!

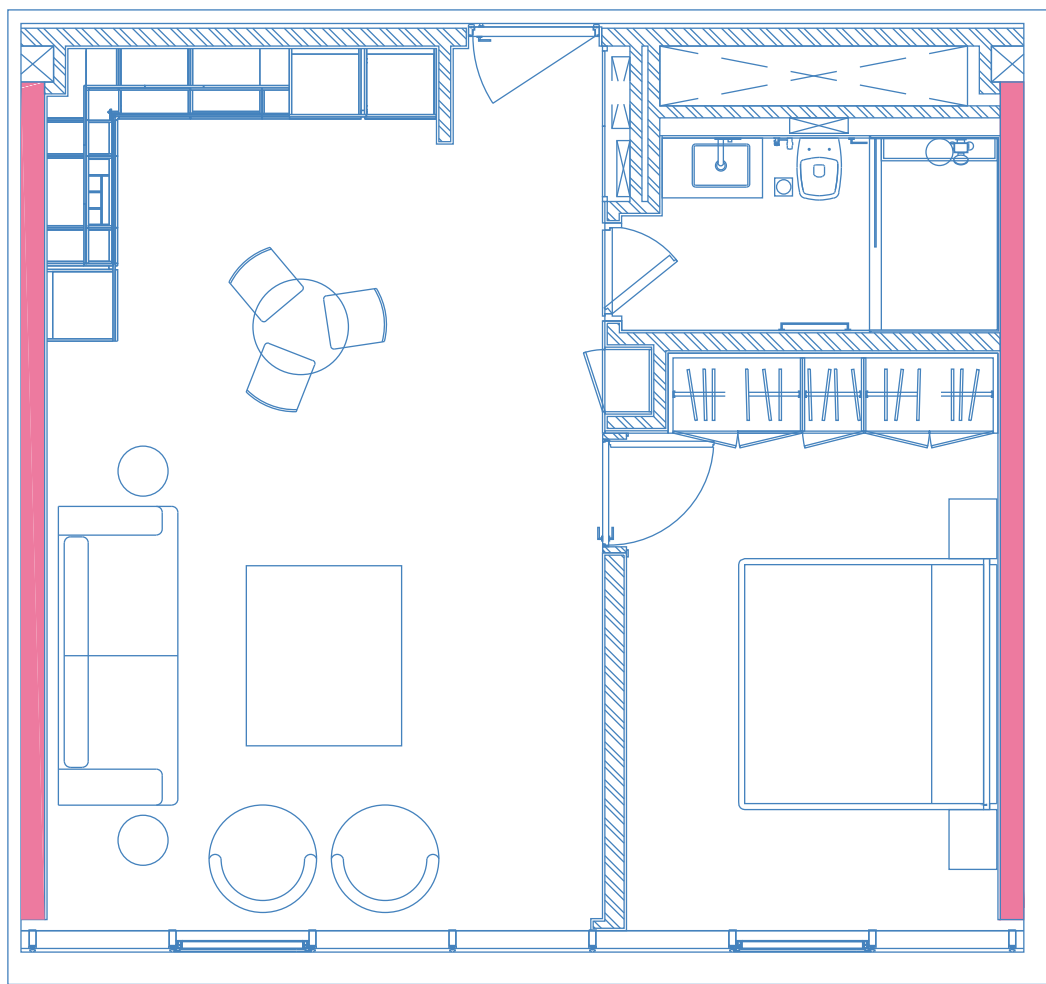
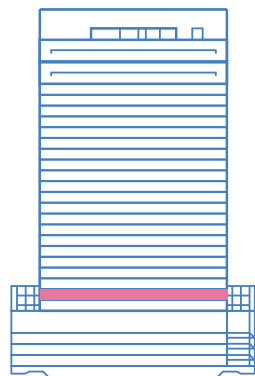
Looking for new flavors? Want to try new textures? We've got just the right kind of international high-end cuisine to bring excitement to your taste buds and your keen sense of aesthetics.

And when you don't feel like lifting a finger, leave the cooking to the pros at The Pad's Fusion Lounge. Let us spoil you.

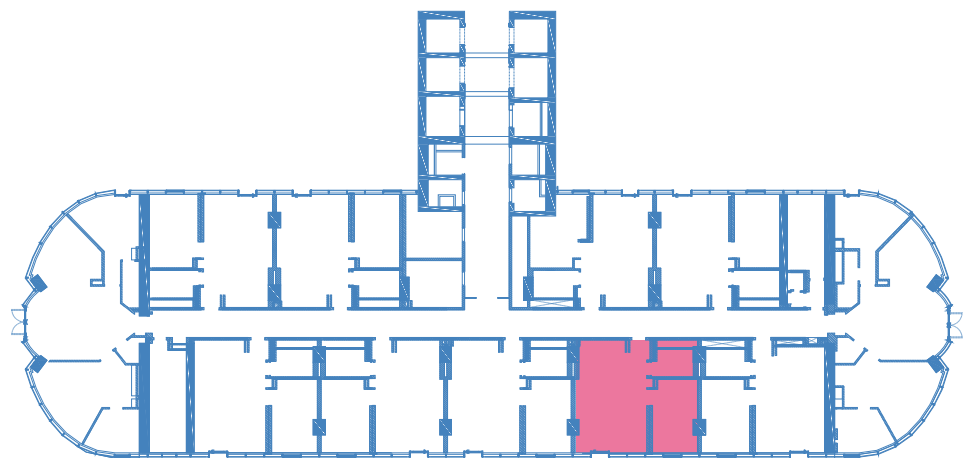


ONE BEDROOM

VIEW: CANAL
CARPARK: 1
SIZE: 684 SQFT



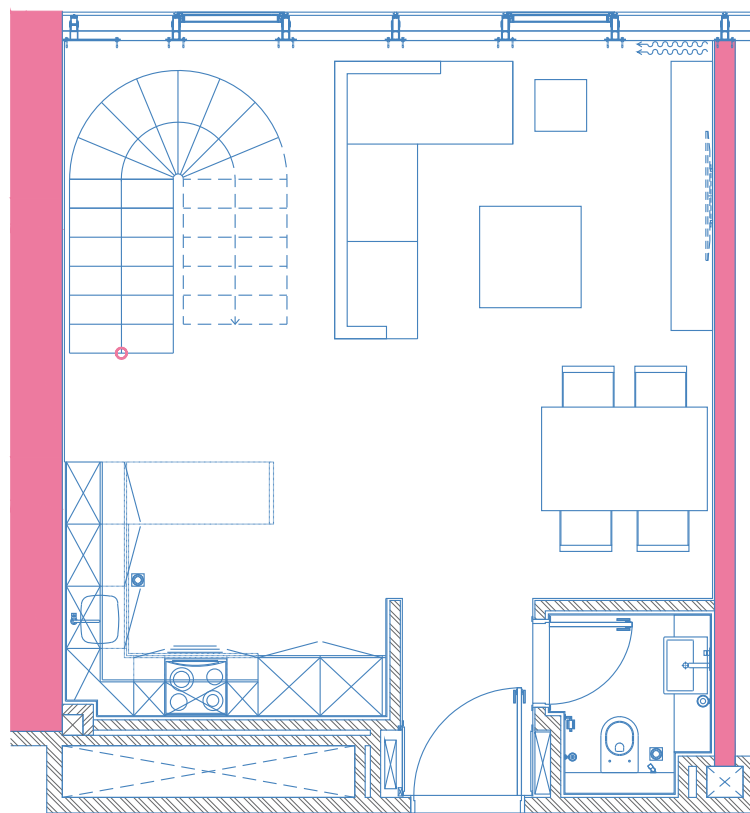
BURJ KHALIFA & DOWNTOWN DUBAI



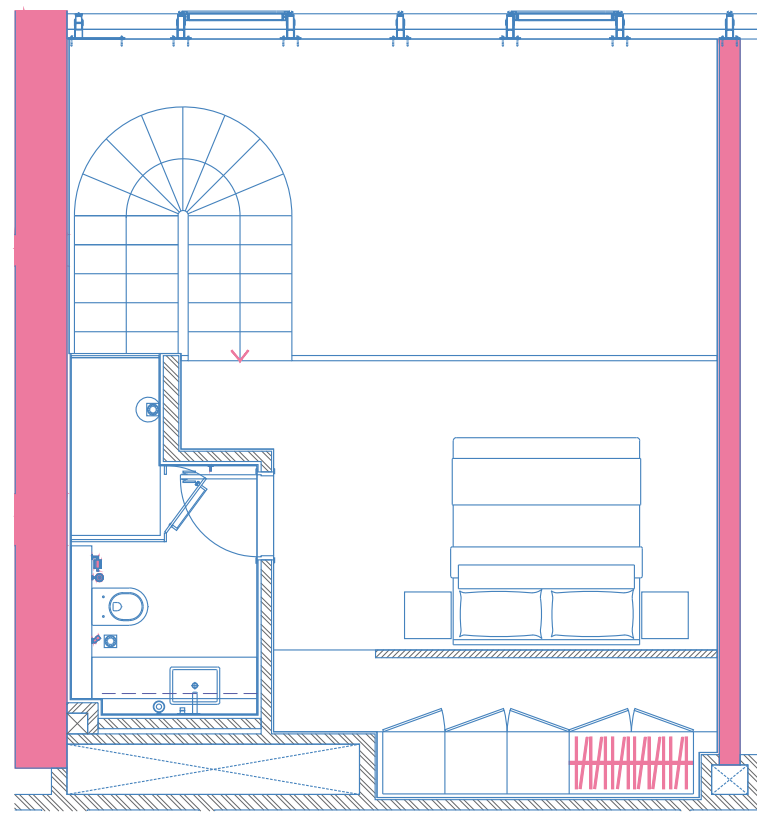
DUBAI CREEK

VIEW: BURJ KHALIFA
CAR PARK: 1
SIZE: 1015 SQFT

ONE BEDROOM LOFT

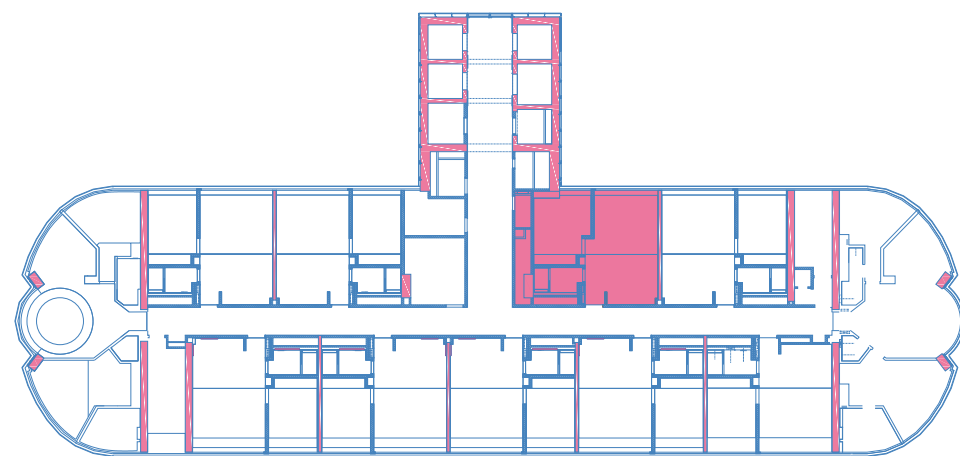
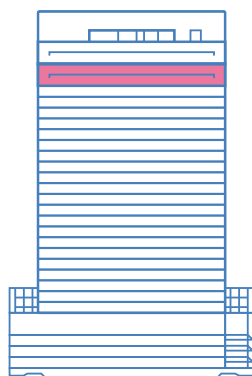


GROUND FLOOR



MEZZANINE

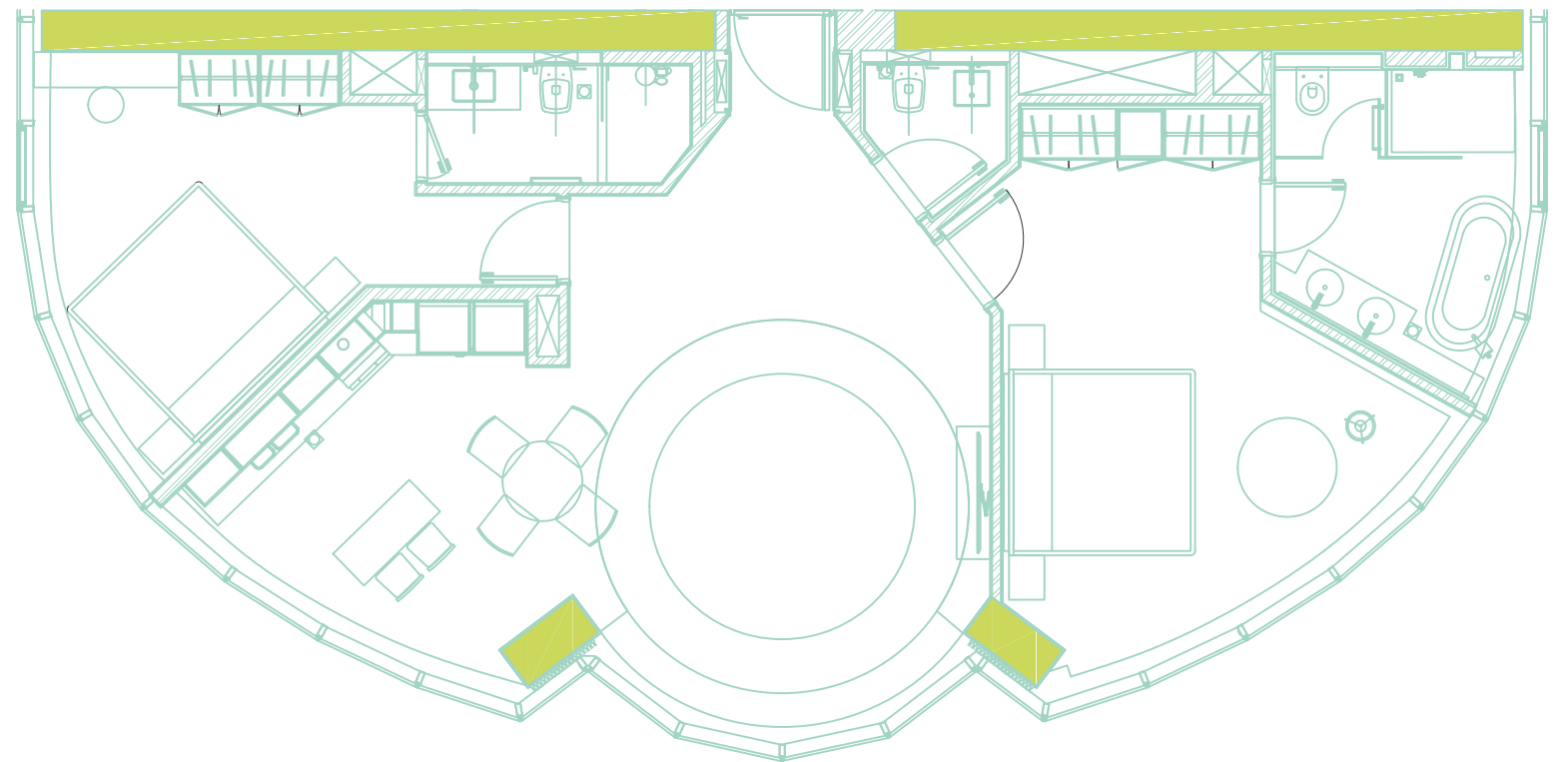
BURJ KHALIFA & DOWNTOWN DUBAI



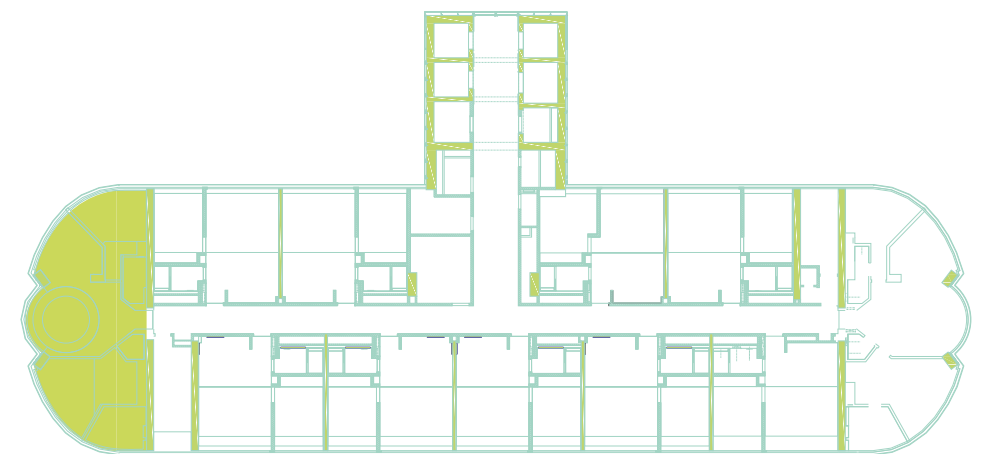
DUBAI CREEK

TWO BEDROOM

VIEW: BUJ KHALIFA & CANAL
CARPARK: 1
SIZE: 1277 SQFT



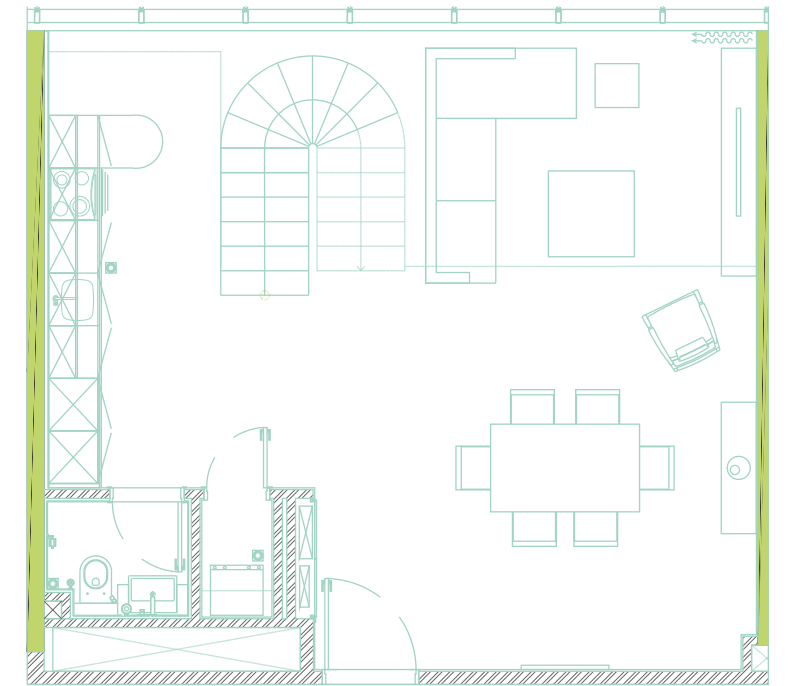
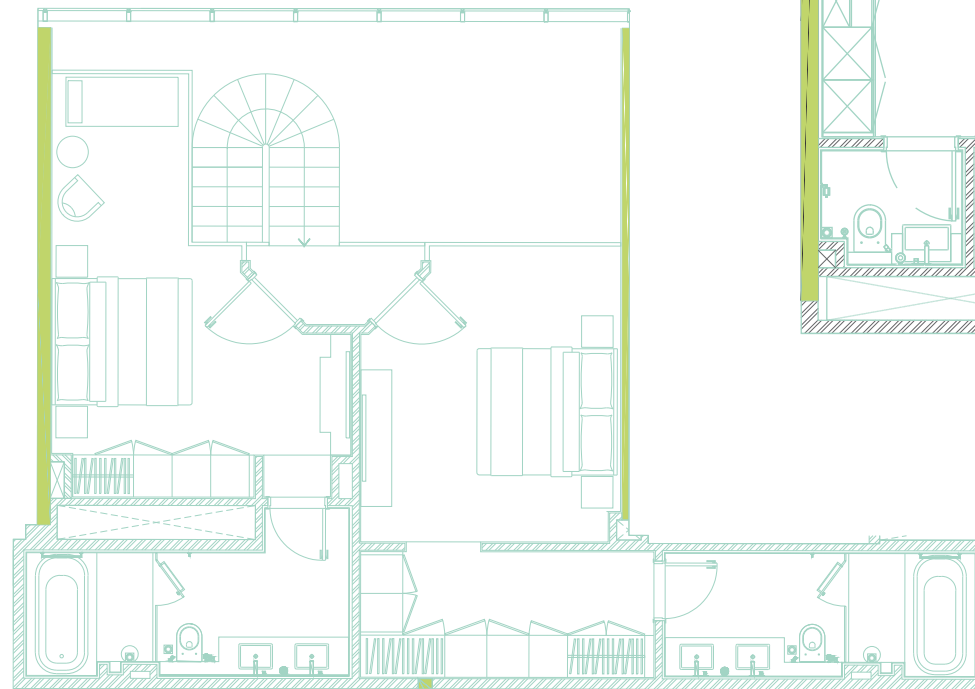
BURJ KHALIFA & DOWNTOWN DUBAI



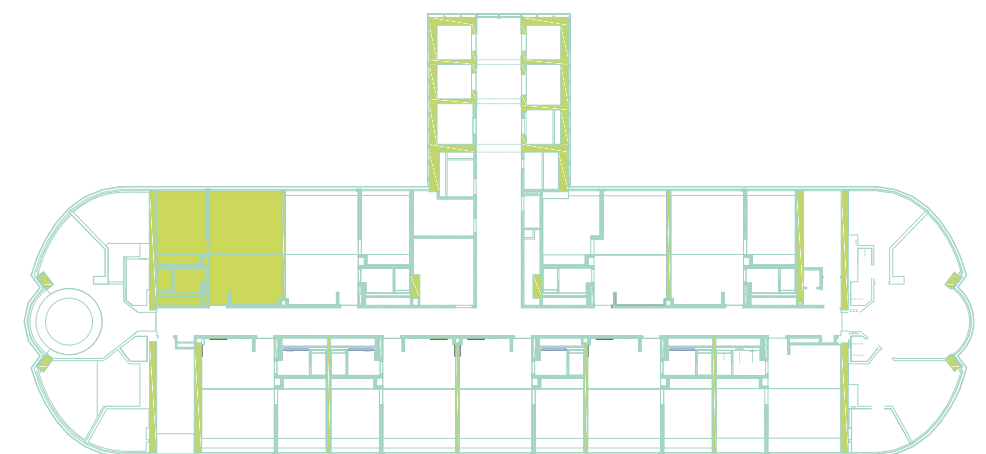
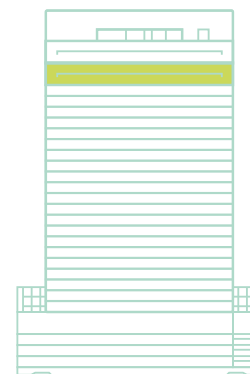
DUBAI CREEK

TWO BEDROOM LOFT

VIEW: BURJ KHALIFA
CAR PARK: 1
SIZE: 1584 SQFT



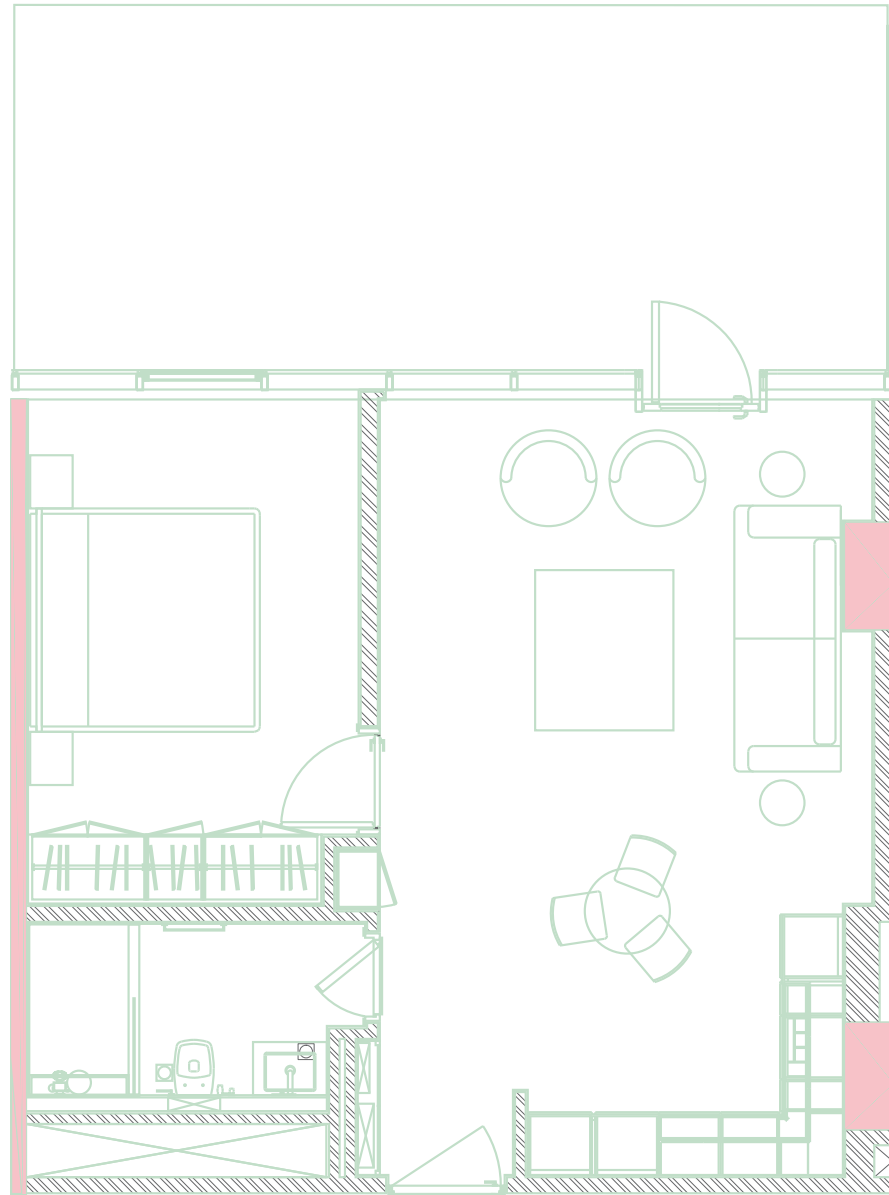
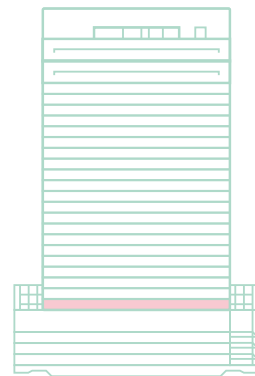
BURJ KHALIFA & DOWNTOWN DUBAI



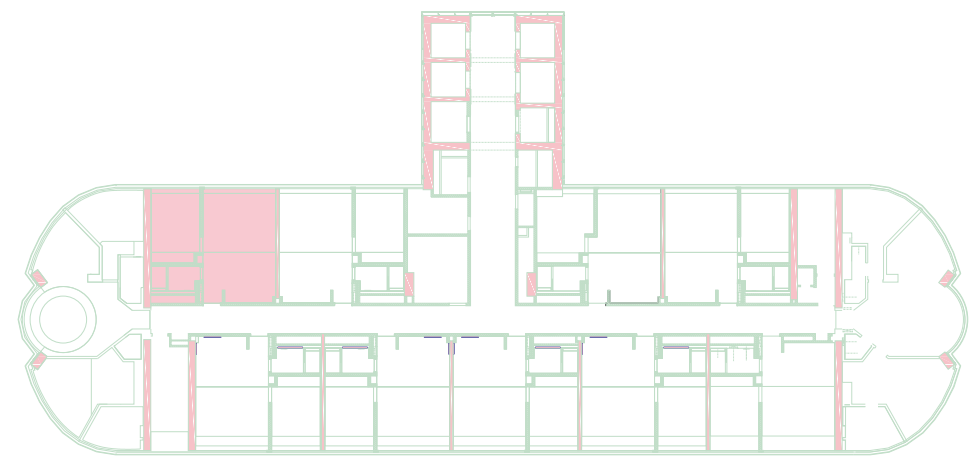
DUBAI CREEK

VIEW: BUIJ KHALIFA
CARPARK: 1
SIZE: 945 SQFT

PODIUM ONE BEDROOM



BURJ KHALIFA & DOWNTOWN DUBAI



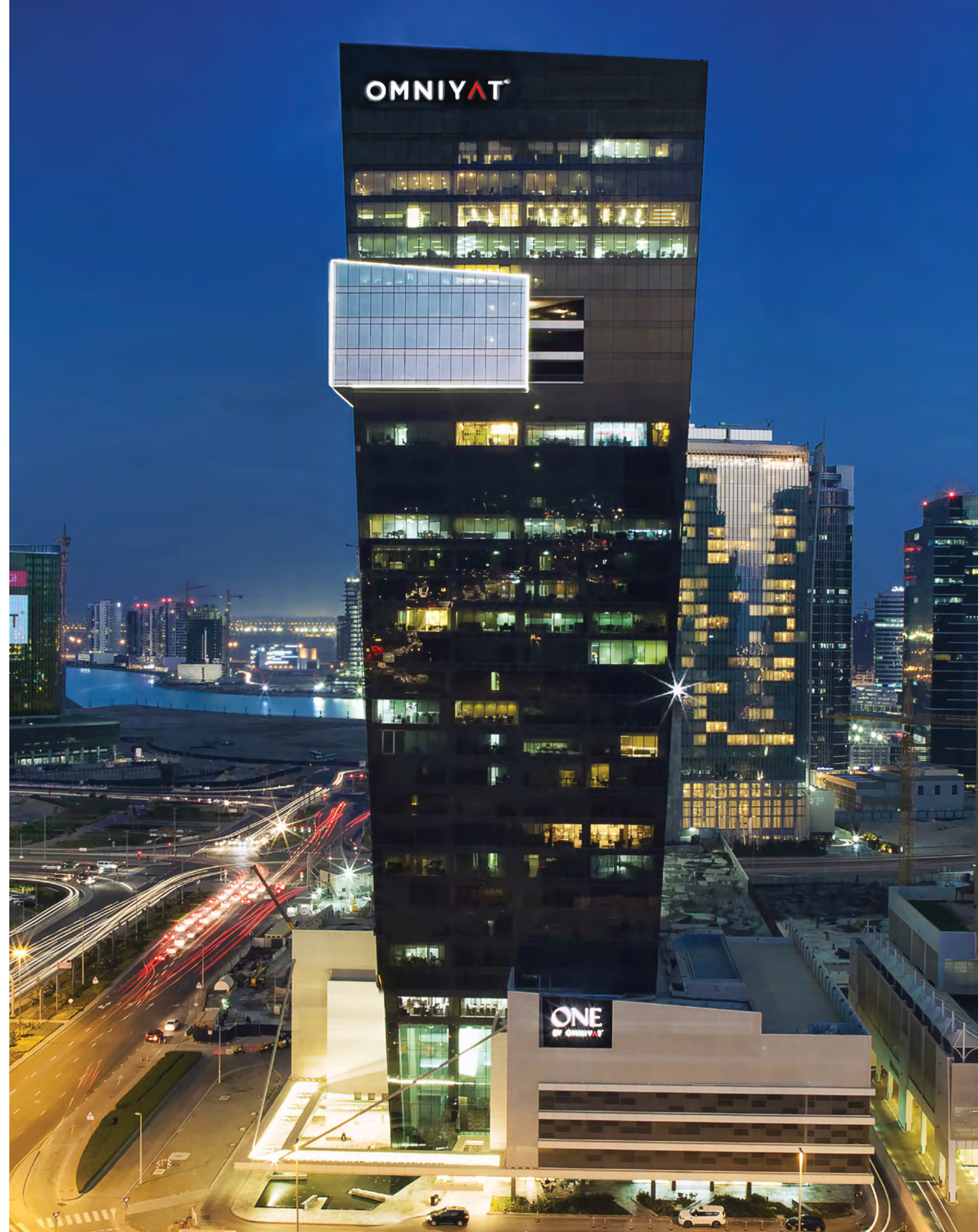
DUBAI CREEK

ABOUT OMNIYAT

A tour de force, Omniyat is regarded as one of the most visionary and innovative premium development brands in the Gulf region.

Led by Mr. Mahdi Amjad, Executive Chairman and CEO, Omniyat works with the world's most respected architects, specialty consultants and contractors to create iconic properties – both commercial and residential – that push the limits of what.

Launched in 2005, Omniyat's main focus is to generate superior value proposition and yield high returns while delivering projects that cater to the needs of both business and leisure clients. The total value of Omniyat's portfolio is USD 4.4 billion.



A nighttime architectural rendering of the ANWA skyscraper in Dubai Maritime City. The building is a tall, slender tower with a grid-like facade of balconies and windows, many of which are illuminated from within, creating a warm glow. The top of the building is crowned with a bright, starburst light effect. The building is situated along a waterfront, with its reflection clearly visible in the dark water. In the foreground, several palm trees and a row of small, glowing yellow buoys are visible. Other modern buildings of varying heights and designs are visible in the background, also illuminated at night. The sky is dark with some faint stars.

ANWA

Bringing back the glamour and class of grand Transatlantic cruise voyages of the 20's, ANWA by Omniyat is Dubai Maritime City's foremost residential project.

ANWA will feature endless views of the ocean at every floor. Dressed to perfection, each apartment will include open spaces to inspire ultimate elegance and breezy living..

At ANWA, the night will be yours. apartment.

ONE AT PALM JUMEIRAH

ONE at Palm Jumeirah is the nirvana of modern day real estate.

Crafted for the most privileged of the privileged few. On the world's premier man-made island, this is where every man is an island.

Designed by the award winning New Yorker firm SOMA Architects, ONE is an eye-catching architectural statement that draws reality to the ethereal. Every unit becomes a statement of personal taste and rigor with the design elements selected from Interior Designer's, Super Potato and Elicyon. Celebrity landscape artist Vladimir Djurovic's, exclusive vision permeates the elements of earth, air, fire and water furthering his zen-at-every-turn concept.



An aerial night-time photograph of two tall, modern skyscrapers with a grid-like facade of windows and balconies. The buildings are illuminated from within, showing a warm glow. They are situated in a city with other high-rise buildings in the background and a body of water with sailboats to the left. A wide road with light trails from traffic is at the bottom. The sky is dark, and the overall scene is a high-end architectural rendering.

THE STERLING

This is the members-only club for those who know how to make it big.

Conveniently placed in Dubai's Burj Khalifa District, The Sterling by Omniyat is a residential project that consists of two gleaming towers and the connecting halls that make up the lobby, retail spaces and elevated gardens. Its intelligent architecture and crafted interior design converge to create the ideal destination for globetrotting connoisseurs of fine living.

THE OPUS BY OMNIYAT

This is the building that never sleeps. The Opus by Omniyat is the first foray into Dubai by the world-famous architect Dame Zaha Hadid and a destination in its own right.

With an organic void right at the heart of the building, it is an architectural wonder made of engineering at its most impressive. Located in Dubai's Burj Khalifa district, The Opus by omniyat combines a variety of residences and a design hotel operated by the leading hotelier group ME by Melia Hotels International.

THE RESIDENCES, DORCHESTER COLLECTION, DUBAI

The Residences Dorchester Collection Dubai comprises the first Dorchester Collection hotel in Asia, and 39 ultra-exclusive, opulent and glamorous waterfront residences, designed by the renowned Foster + Partners studio. It is a uniquely luxurious playground, with spacious apartments, grand terraces, dream-like gardens, and magnificent views of Dubai. Towering at 150 metres over the Marasi Marina, this elite development bears the signature Omniyat style of combining art, design and architecture to create fascinating spaces in prestigious locations for elite clients.



CONTACT US

**OMNIYAT GROUP SALES OFFICE
ONE BY OMNIYAT, GROUND FLOOR
BUSINESS BAY, DUBAI**

**TOLL FREE (WITHIN UAE): 800 666
OUTSIDE UAE: +971 4 511 5004**

SALES@OMNIYAT.COM

WWW.OMNIYAT.COM

Disclaimer: The images, artist representations and interior decorations, finishes, appliances and furnishings contained in this brochure are provided for illustrative purposes only. Nothing in this brochure and/or any accompanying document and/or communication from The Pad (whether verbal or in writing) constitutes a promise, representation and/ or warranty in any form whatsoever. The Pad reserves the right to substitute at any time without notice all or parts of the materials, appliances, equipment, fixtures and other construction and design details specified herein with similar materials, appliances, equipment and/or fixtures of equal or better quality, determined at the sole discretion of The Pad. All square footages and dimensions are approximate only and may be subject to change at any time without notice. The square footage indicated herein may exceed the usable floor area. The Pad reserves the right to make any changes to the content of this brochure at any time without notice.

Any reference to The Pad includes a reference to Pad Properties Nine Limited LLC and any of its respective affiliates (as the context requires).

THE PAD

BY OMNIYAT